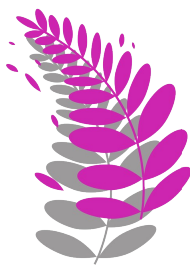


FERNDOWN ESTATES



26 Travellers Way, Birmingham, , B37 6TS

3 Bed House - Terraced

£750 PCM

🏠 Receptions 1

🛏 Bedrooms 3

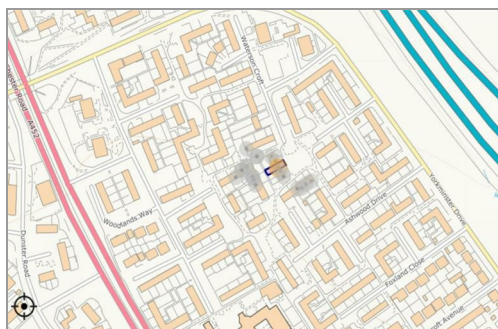
🚿 Bathrooms 1



• *WE DO NOT CHARGE TENANT APPLICATION FEES*

- THREE BEDROOM PROPERTY
- COMMUNAL OFF ROAD PARKING
- FRONT AND REAR GARDEN

- GOOD SIZE FAMILY KITCHEN/DINER
- AVAILABLE FOR LONG TERM LET



WE DO NOT CHARGE TENANT FEES

GOOD SIZE THREE BEDROOM TERRACED PROPERTY. WARM AIR HEATING, FRONT AND REAR GARDEN. SITUATED ON A WALKWAY WITH COMMUNAL PARKING TO THE FRONT AVAILABLE FOR LONG TERM LET.

Approach and Overview



Approached via walkway overlooking communal parking area and green.

Entrance Hallway and Cloakroom



Small hallway with cloakroom storage to the left and door leading to hallway

Cloakroom/Storage



Kitchen/Diner



Overlooking the front of the property, integrated oven, hob and extractor. Space for fridge freezer and washing machine.

Kitchen Diner



Lounge



Lounge



Bedroom 1



Double glazed window overlooking the rear, accessed from kitchen and hallway. Good Size living room with two light fittings.

Overlooking rear of the property. Good size room with double glazed window.

Bedroom 2



Good Size double bedroom with light point and double glazed window overlooking the front of the property

Bathroom/Toilet



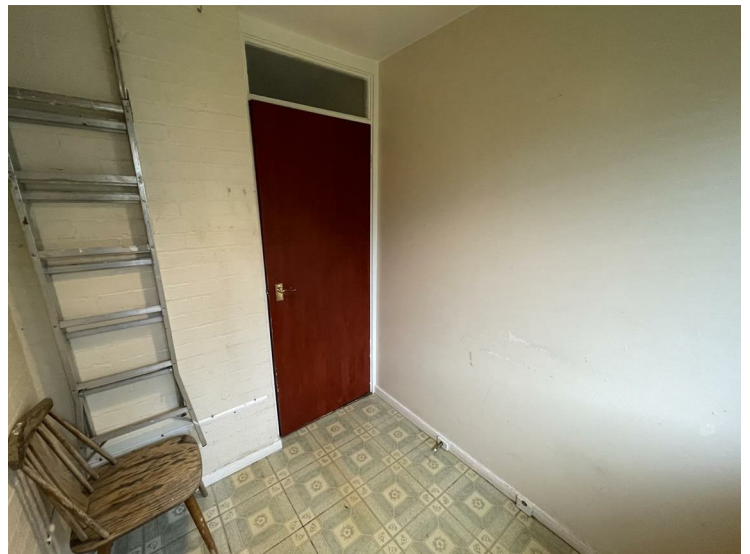
Beautifully presented family bathroom. With low level WC, hand basin and bath complete with shower over.

Bedroom 3



Good size single room, with double glazed window over looking the rear of the property.

Storage room leading to rear garden



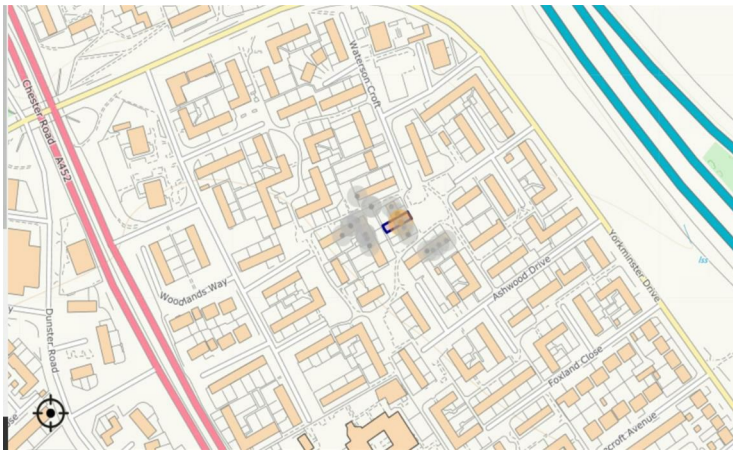
Good size room with access to rear garden.

Rear Garden



Part slabbed part laid to lawn, low maintenance garden with gate at rear for access and also shed for storage.

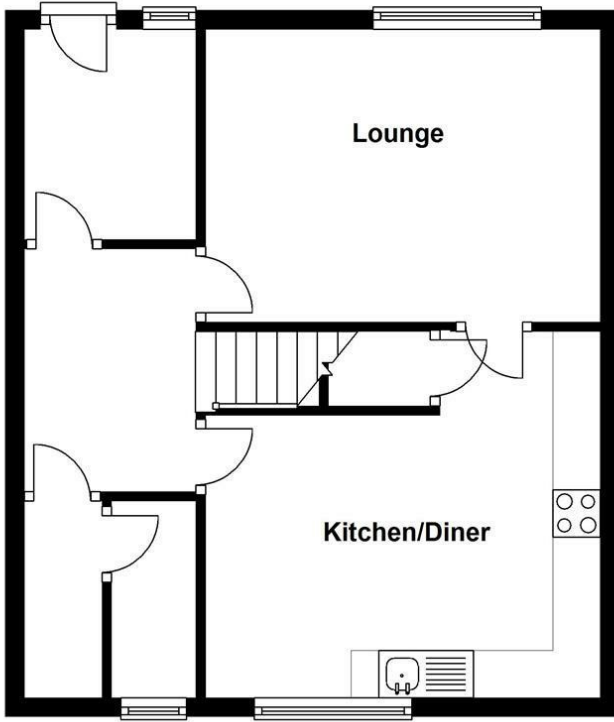
Area and Overview



Located in Chelmsley Wood the property is 1.62 Miles from Marston Green train station. It is also in close proximity to local shops, schools bus and motorway network links

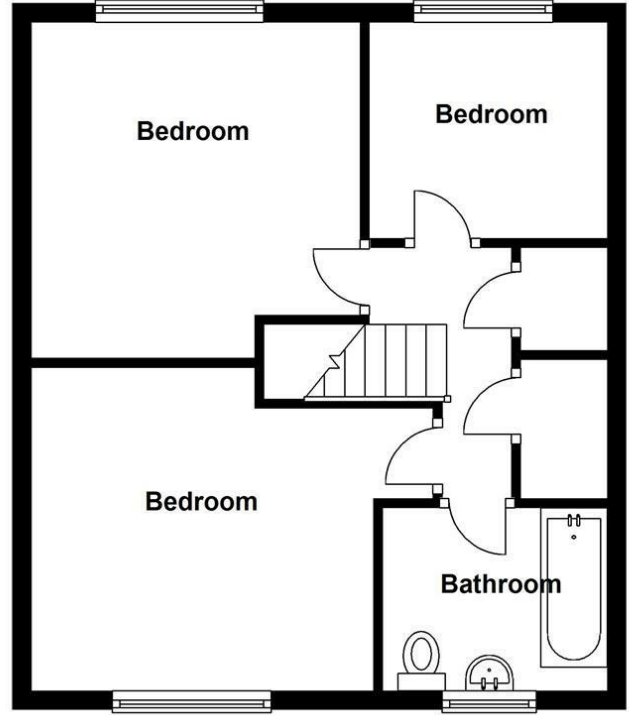
Ground Floor

Approx. 42.8 sq. metres (461.2 sq. feet)



First Floor

Approx. 42.8 sq. metres (461.2 sq. feet)

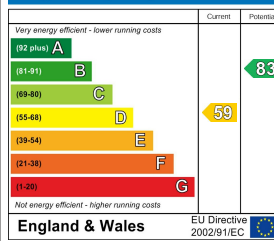


Total area: approx. 85.7 sq. metres (922.4 sq. feet)



PROPERTY MISDESCRIPTIONS ACT: Ferndown Estates have not tested any equipment, fixtures, fittings or services mentioned and do not by these Particulars or otherwise verify or warrant that they are in working order. All measurements listed are given as an approximate guide and must be carefully checked by and verified by any Prospective Purchaser. These particulars form no part of any sale contract. Any Prospective Purchaser should obtain verification of all legal and factual matters and information from their Solicitor, Licensed Conveyancer or Surveyors as appropriate.

Energy Efficiency Rating



Environmental Impact (CO₂) Rating

