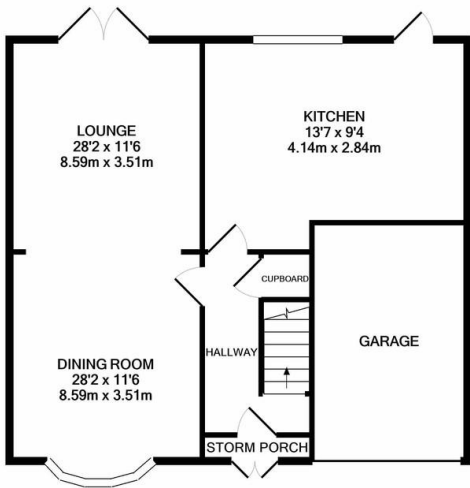


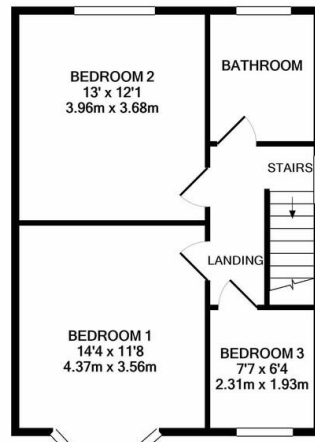


Property Summary

A lovely family home situated on the popular 'Meres' estate in Wigston, comprises entrance hall, lounge, sitting room, breakfast kitchen, three bedrooms, shower room, off road parking and garage, and pleasant and well maintained rear garden. This property is immaculately presented throughout and a real must see!



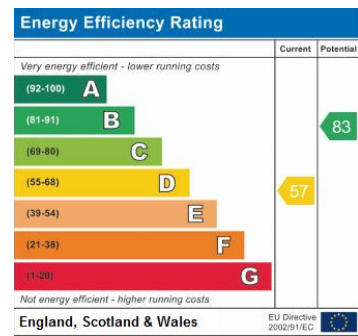
GROUND FLOOR



1ST FLOOR

CREATED BY PHILLIPS GEORGE

Whilst every attempt has been made to ensure the accuracy of the floor plan contained here, measurements of doors, windows, rooms and any other items are approximate and no responsibility is taken for any error, omission, or mis-statement. This plan is for illustrative purposes only and should be used as such by any prospective purchaser. The services, systems and appliances shown have not been tested and no guarantee as to their operability or efficiency can be given.
Made with Metropix ©2021



- Bay Windows
- Beautiful Rear Garden
- Garage
- Well Presented Throughout
- Detached
- Three Bedrooms
- Breakfast Kitchen
- Open Plan Reception Rooms

phillips george | sales & lettings

Agents Note: Whilst every care has been taken to prepare these sales particulars, they are for guidance purposes only. All measurements are approximate and for general guidance purposes only and whilst every care has been taken to ensure their accuracy, they should not be relied upon and potential buyers are advised to recheck the measurements

🏠 46 Long Street, Wigston, Leicestershire, LE18 2AH

✉ info@phillipsgeorge.co.uk
☎ 0116 216 8178

