



CHISWELL & CO
RESIDENTIAL SALES & LETTINGS

62 WOLVERTON ROAD, BOURNEMOUTH, DORSET, BH7
6HU
ASKING PRICE OF £134,950





Chiswell & Co are delighted to offer for SALE this modern one double bedroom first floor flat located in a great location close to Bournemouth's Beaches, and Boscombe town centre. This great flat is ready to view and we have keys in the office, book a viewing today.

Property Comprises of: Lounge with large double glazed window to front aspect

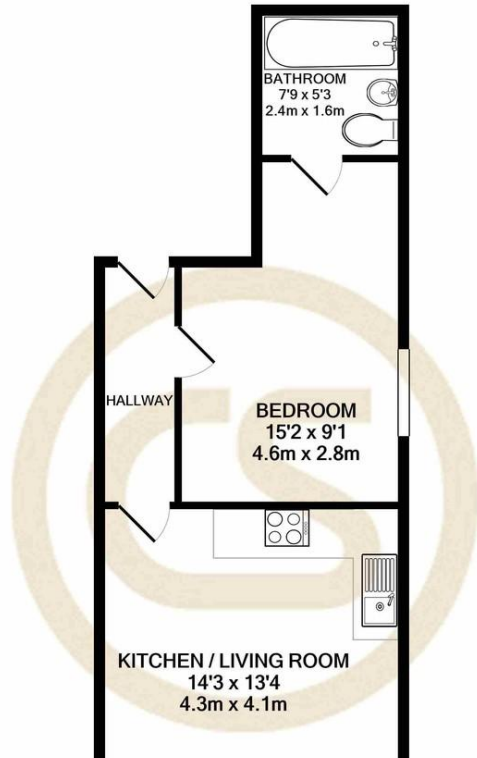
Kitchen with white good all brand new, kitchen finished in maple effect with part tiled walls, sink unit with mixer taps. Bedroom with beige décor, double glazed window to rear aspect

Bathroom, family sized with white suite, panelled enclosed bath.

Lounge/kitchen 4.0m x 4.34m

Bedroom 4.63m x 2.77m

Bathroom 2.36m x 1.6m



%epcGraph_c_1_304%