



11 Wenlock Close
Halesowen,
West Midlands B63 1HQ

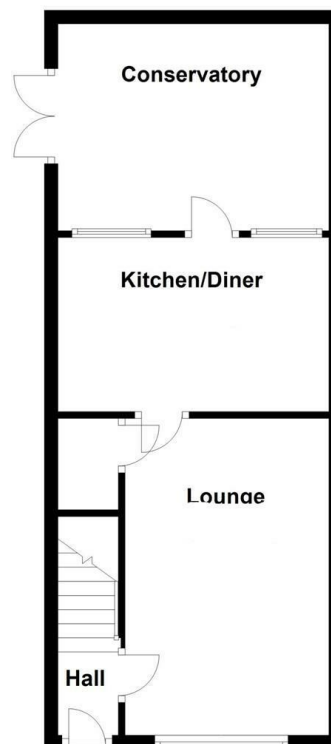
Guide Price £200,000

...doing things differently

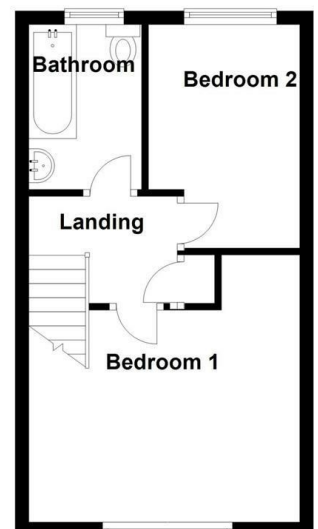


HUGE POTENTIAL ON TWO BEDROOM CORNER PLOT. Having no upward chain this two bedroom end terraced is well positioned in a cul de sac location. The property itself comprises of good sized front and rear gardens, lounge, kitchen diner, conservatory, two bedrooms, house bathroom and garage en bloc. Contact the office at your earliest opportunity to arrange your viewing. LA 24/2/21 V2 EPC=D

Ground Floor



First Floor









Location

Halesowen lies approximately 7 miles from Birmingham City Centre and is just minutes away from junction 3 of the M5 motorway giving access to the greater motorway network all around the West Midlands. The History of Halesowen stems back as far as the Anglo Saxons and it was listed in the Domesday Book as being larger than Birmingham. It forms part of the southern edge of the Black Country and during the industrial revolution it became synonymous with nail and screw making, an industry that still survives to a lesser extent today. Despite its proximity to the Black Country it still retains areas of beauty and Grade I listed Leasowes Park is thought to be one of the first natural landscape gardens in England. In certain areas the town is predominated by a vast array of Victorian houses but further development during the 1960's and 70's saw the building of several large housing estates. It has a number of highly sought after primary and secondary schools. Whilst Halesowen no longer has a train station of its own the Worcester to Birmingham line passes along the northern edge of its boundary and the stations of Cradley Heath, Old Hill and Rowley Regis are all within a few miles of the town centre. Halesowen bus station is a busy interchange and regular service runs to Birmingham City Centre.

Approach

Via fore garden with slabbed pathway, gravelled areas to side with various plants and shrubs, outside storage cupboard.

Entrance hall

Central heating radiator, stairs to first floor accommodation.

Lounge 9'10" x 15'5" (3.0 x 4.7)

Double glazed window to front, central heating radiator, electric fire, cupboard off housing boiler.

Kitchen diner 8'6" x 13'1" (2.6 x 4.0)

With central heating radiator, double glazed window and door to rear, range of wall and base units with work surface over incorporating sink with mixer tap, gas hob with extractor hood over, integrated oven, space and plumbing for washing machine and tiled splashbacks.





Conservatory 13'1" x 9'10" (4.0 x 3.0)

With tiled flooring and double glazed windows and doors.

First floor landing

Double glazed window to side, access to loft space, cupboard off and doors radiating to:

Bedroom one 10'9" x 9'6" (3.3 x 2.9)

With double glazed window to front, central heating radiator and built in wardrobes.

Bedroom two 8'6" max 6'10" min x 11'5" (2.6 max 2.1 min x 3.5)

With double glazed window to rear and central heating radiator.

House bathroom

Wash hand basin with mixer tap over and storage below, bath with electric shower over, low level w.c., central heating radiator, double glazed window to rear, tiling to splashbacks.

Rear garden

Slabbed patio area, gravelled borders, lawns, beds with various plants and shrubs and all with hedging and fencing to enclose.

Garage

There is a garage to the property en bloc.

Tenure

References to the tenure of a property are based on information supplied by the seller. We are advised that the property is freehold. A buyer is advised to obtain verification from their solicitor.

Money Laundering Regulations

In order to comply with Money Laundering Regulations, from June 2017, all prospective purchasers are required to provide the following - 1. Satisfactory photographic identification. 2. Proof of address/residency. 3. Verification of the source of purchase funds. In the absence of being able to provide appropriate physical copies of the above, Lex Allan Grove reserves the right to obtain electronic verification.

Referral Fees

We can confirm that if we are sourcing a quotation or quotations on your behalf relevant to the costs that you are likely to incur for the professional handling of the conveyancing process. You should be aware that we could receive a maximum referral fee of approximately £175 should

you decide to proceed with the engagement of the solicitor in question. We are informed that solicitors are happy to pay this referral fee to ourselves as your agent as it significantly reduces the marketing costs that they have to allocate to sourcing new business. The referral fee is NOT added to the conveyancing charges that would ordinarily be quoted.

We can also confirm that if we have provided your details to Infinity Financial Advice who we are confident are well placed to provide you with the very best possible advice relevant to your borrowing requirements. You should be aware that we receive a referral fee from Infinity for recommending their services. The charges that you will incur with them and all the products that they introduce to you will in no way be affected by this referral fee. On average the referral fees that we have received recently are £218 per case.

The same also applies if we have introduced you to the services of Mr Tony Lowe of Green Street Surveys who we are confident will provide you with a first class service relevant to your property needs, we will again receive a referral fee equivalent to 20% of the fee that you pay to Green Street Surveys. This referral fee does not impact the actual fee that you would pay Green Street Surveys had you approached them direct as it is paid to us as an intermediary on the basis that we save them significant marketing expenditure in so doing. If you have any queries regarding the above, please feel free to contact us.

IMPORTANT NOTICE: 1. No description or information given whether or not these particulars and whether written or verbal (information) about the property or its value may be relied upon as a statement or representation of fact. Lex Allan Grove Ltd do not have any authority to make representation and accordingly any information is entirely without responsibility on the part of Lex Allan Grove Ltd or the seller. 2. The photographs (and artists impression) show only certain parts of the property at the time they were taken. Any areas, measurements or distances given are approximate only and interior measurements are wall to wall. 3. Any reference to alterations to, or use of any part of the property is not a statement that any necessary planning, building regulations or other consent has been obtained. 4. No statement is made about the condition of any service or equipment.



Lex Allan Grove

Lex Allan Grove Estate Agents
18 Hagley Road, Halesowen
West Midlands B63 4RG

0121 550 5400
lexallangrove.com
info@lexallangrove.com