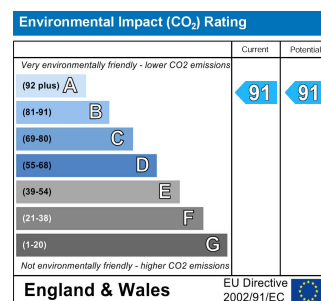
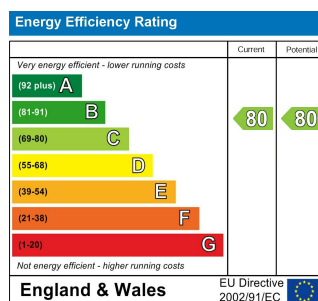




Rick Roberts Way, London, E15 2FP £2,100 Per Month

A MODERN THREE BEDROOM FLAT IN EXCELLENT CONDITION, SITUATED ON THE 8TH FLOOR, approximately 10 minute walk to Stratford International Station, and also benefits from a bathroom plus en-suite shower room. Available End of March



Scan here for a direct link to our website

- MODERN EIGHTH FLOOR FLAT
- BATHROOM PLUS EN-SUITE SHOWER ROOM
- KITCHEN - WHITE GOODS
- PART FURNISHED
- DOUBLE GLAZING
- THREE BEDROOMS - TWO DOUBLE
- LOUNGE
- LIFT ACCESS
- GAS CENTRAL HEATING
- AVAILABLE END OF MARCH 2021

AGENTS NOTE: 'We routinely refer buyers and sellers to solicitors and conveyancers. It is your decision whether you choose to deal with them. Should you decide to use them you should know that we would receive a referral fee of between £120 and £200 including VAT from them for recommending you to them.'

The mention of any appliances and/or services within these Sales Particulars does not imply that they are in full and efficient working order. All measurements have been taken using a sonic tape measure or laser distance meter and therefore may be subject to a small margin of error. Whilst we endeavour to make our Sales Particulars accurate and reliable, if there is any point which is of particular importance to you, please contact us and we will be pleased to check the information. Do so particularly if contemplating travelling some distance.

GROUND FLOOR:

Communal Entrance Hall:



Entrance via communal door with video entry phone system. Stairs and lift leading to upper floors.

EIGHTH FLOOR

Landing:

Entrance into:

Entrance Hall:

Storage cupboard housing washing machine and boiler. Access into:

Lounge:



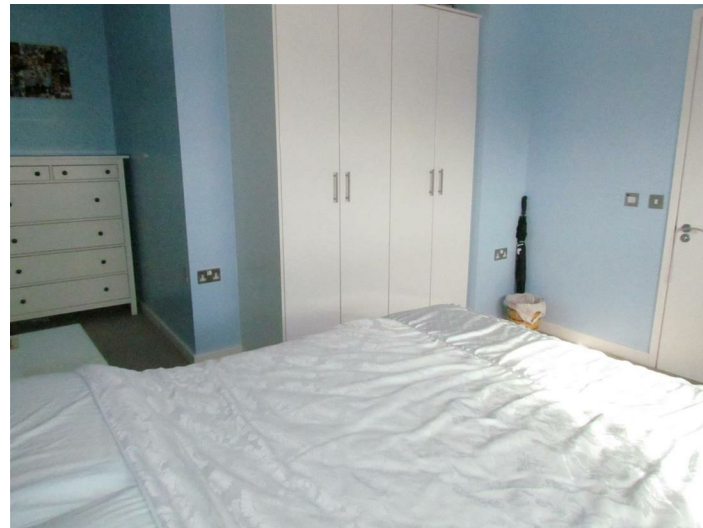
Double glazed window and door with access to Balcony. Laminate flooring. Access to Kitchen.

Modern Kitchen:



Integrated oven and hob, and fridge/freezer.

Bedroom One:



Double glazed window. Fitted cupboard. Carpet. Access to:

En-suite Shower Room:



Shower cubicle. Wall mounted w.c, wash hand basin. Tiled walls and flooring.

Bedroom Two:



Double glazed window. Access to Balcony. Carpet.

Bedroom Three:



Double glazed window. Carpet. Wardrobe.

Bathroom/w.c.:



Three piece suite comprising, panelled bath, wall mounted basin, and low flush w.c. Tiled walls and flooring.

EXTERIOR:

Communal Gardens

