



Vista Chelsea Bridge,
London, SW11 8AZ
£670 Per Week

GARTON JONES.COM



Cascade Court,
Vista Chelsea Bridge,
London, SW11 8AZ

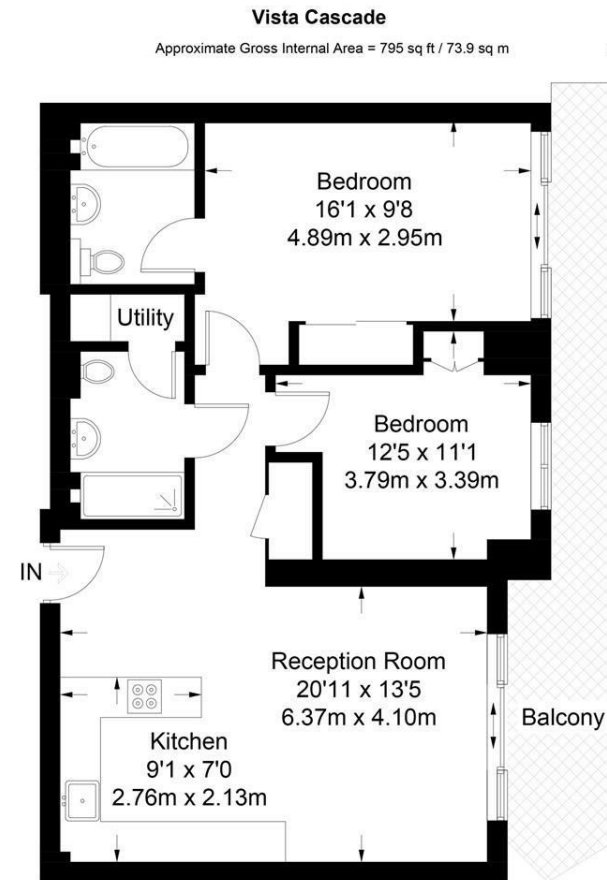
£670 Per Week



Luxurious two bedroom apartment located on the third door in the Vista Cascade Court at Chelsea Bridge Wharf. Spacious open plan kitchen with beautiful stone work surface finishes and a beautifully designed lounge area. Both bedrooms are very spacious with good storage and two bathrooms. Spacious terrace with Battersea Park views. Fully equipped residents gym, and 24 hour swimming pool and concierge.

Located between the wide open spaces of Battersea Park and the exciting redevelopment of Battersea Power Station. The breath-taking design of the building is matched by the luxurious finishes internally and fabulous views.

- Two Bedroom, Two Bathroom
- Garden/Park Aspect
- Balcony
- Open Plan Reception Area
- 795 sq ft
- Third floor
- 24 Hour Concierge
- Gym & Swimming Pool
- Excellent travel Links
- Close to Central London



Third Floor

Not to scale, for guidance only and must not be relied upon as a statement of fact.
All measurements and areas are approximate only and have been prepared in
accordance with the current edition of the RICS Code of Measuring Practice.