



ASPIRE

— TO MOVE —



The Street, Hullavington, SN14

PROPERTY NOW FULLY BOOKED FOR VIEWINGS. Video and physical viewings available. Charming, two bedroom period cottage boasting an abundance of character and charm. Featuring a log burner, enclosed rear garden and summer house, this cottage is available from early March and offered unfurnished.

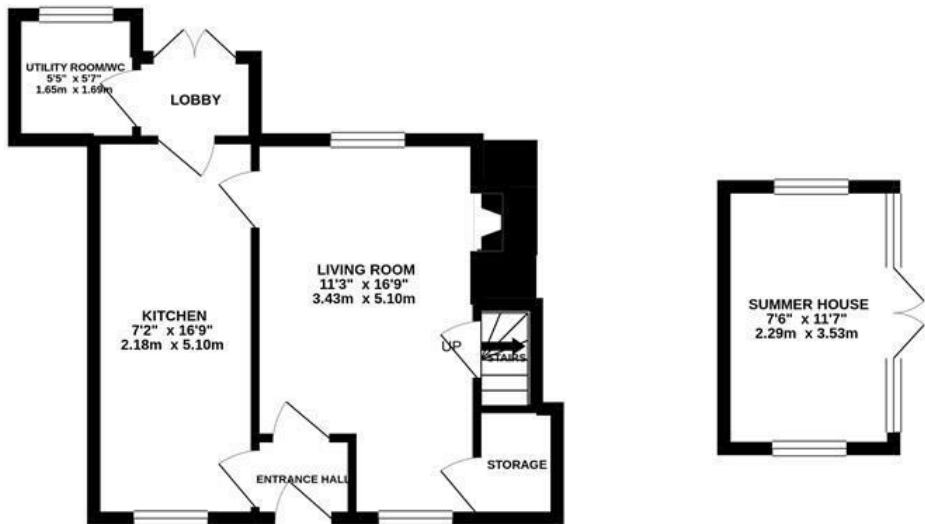
Hullavington is a lively community and thriving village with a Primary School, General Store/Post Office and Garage. The market town of Malmesbury is located 6 miles away with further facilities and an Ofsted 'Outstanding' secondary school. The village is superbly located for the commuter with Junction 17 of the M4 only 3 miles away and Chippenham railway station within 15 minutes, ideal for those commuting to Swindon, Bath and Bristol or further afield.

- Video viewing available
- Charming period cottage
- Rear decking and garden
- Summer house with power
- Log burner
- Pets considered
- Unfurnished
- Available early March

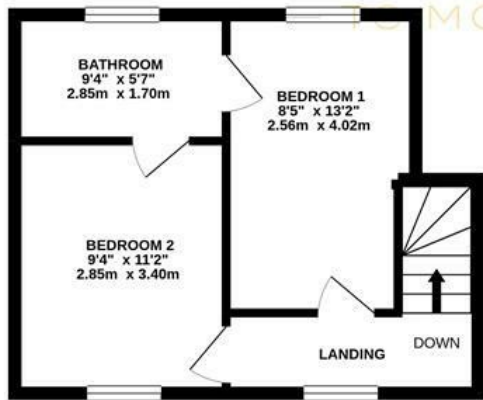
£950 PCM

Floor Plans

GROUND FLOOR
451 sq.ft. (41.9 sq.m.) approx.



1ST FLOOR
324 sq.ft. (30.1 sq.m.) approx.

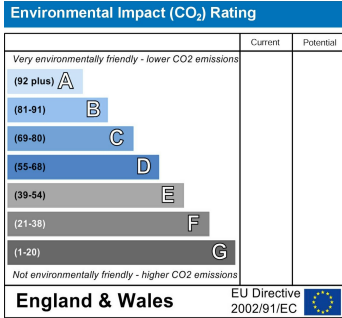
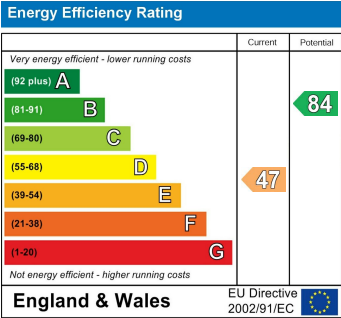


THE STREET, HULLAVINGTON, SN14

TOTAL FLOOR AREA: 774 sq.ft. (71.9 sq.m.) approx.

Whilst every attempt has been made to ensure the accuracy of the floorplan contained here, measurements of doors, windows, rooms and any other items are approximate and no responsibility is taken for any error, omission or mis-statement. This plan is for illustrative purposes only and should be used as such by any prospective purchaser. The services, systems and appliances shown have not been tested and no guarantee as to their operability or efficiency can be given.
Made with Metropix ©2021

Energy Performance Graph



These particulars, whilst believed to be accurate are set out as a general outline only for guidance and do not constitute any part of an offer or contract. Intending purchasers should not rely on them as statements of representation of fact, but must satisfy themselves by inspection or otherwise as to their accuracy. No person in this firms employment has the authority to make or give any representation or warranty in respect of the property.