

**Warkworth Gardens  
Isleworth  
TW7 5JN**

£385,000

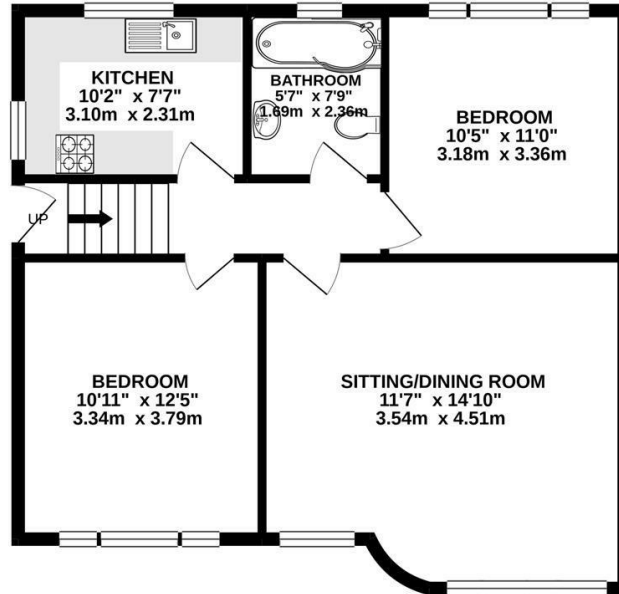
**ChaseBuchanan**



GROUND FLOOR  
150 sq.ft. (14.0 sq.m.) approx.



FIRST FLOOR  
639 sq.ft. (59.3 sq.m.) approx.



TOTAL FLOOR AREA : 789 sq.ft. (73.3 sq.m.) approx.

Whilst every attempt has been made to ensure the accuracy of the floorplan contained here, measurements of doors, windows, rooms and any other items are approximate and no responsibility is taken for any error, omission or mis-statement. This plan is for illustrative purposes only and should be used as such by any prospective purchaser. The services, systems and appliances shown have not been tested and no guarantee as to their operability or efficiency can be given.  
Made with Metropix ©2021

Energy Efficiency Rating		Environmental Impact (CO <sub>2</sub> ) Rating	
Current	Desired	Current	Desired
Very energy efficient - lower running costs		Very environmentally friendly - lower CO <sub>2</sub> emissions	
A		A	
B		B	
C		C	
D		D	
E		E	
F	21	F	
G	31	G	

Care has been taken in the preparation of these particulars, however, their accuracy is not guaranteed and they do not form part of any contract. Measurements stated must be considered maximum.

- Viewings accompanied by Chase Buchanan
- Two bedroom maisonette
- Private garden
- Close to Syon Lane mainline and Osterley tube stations
- Large corner plot with development potential
- Own driveway to garage
- Over 900 years lease
- Chain free

An art deco two bedroom maisonette, located in the highly sought after Duke of Northumberland development.

The accommodation comprises a large open plan sitting/dining room, a modern fitted kitchen, two double bedrooms and a family bathroom. Externally there is an own driveway to garage and a large private garden. Further benefits include over 900 years lease and loft storage.

Warkworth Gardens is ideally located within short walking distance of Syon Lane mainline station (serving London Waterloo), Osterley tube station (Piccadilly Line) and within walking distance of several other local amenities Isleworth has to offer.

For more information or to book a viewing, please contact:

020 8758 1755

**ChaseBuchanan**

7 Odeon Parade, 480 London Road, Isleworth, Middlesex, TW7 4DE