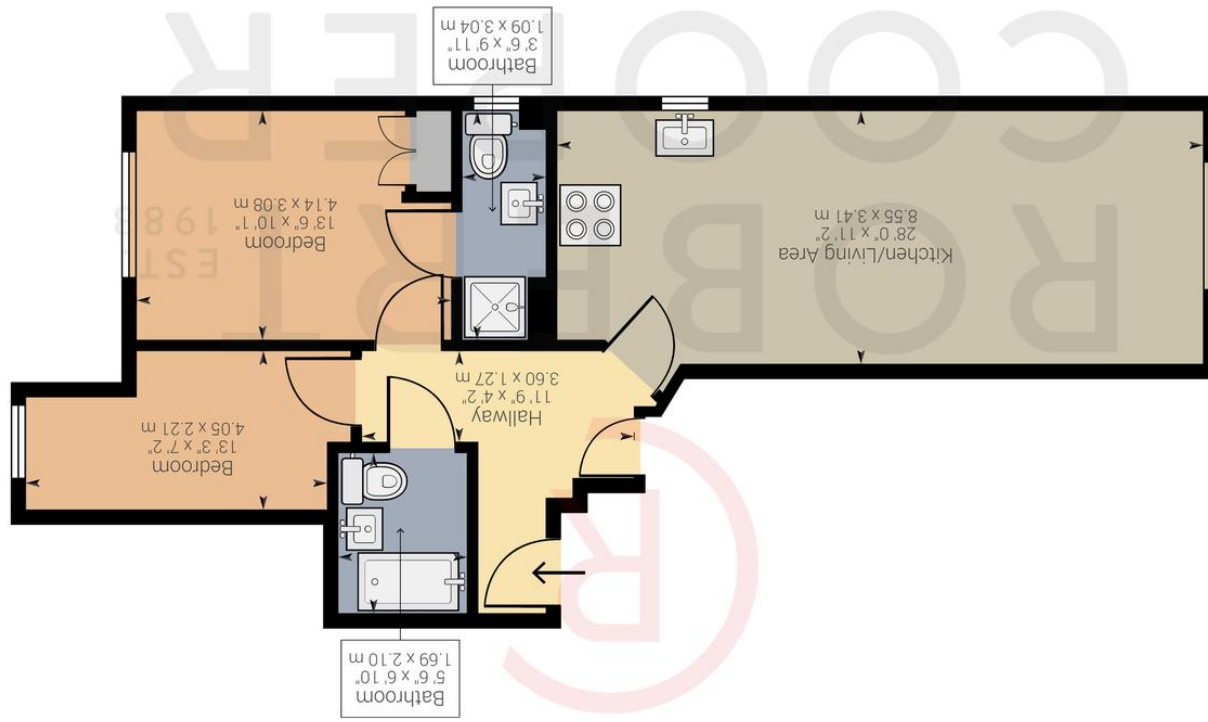


Powered by Giraffe360

Approximate net internal area: 706.2 ft² / 65.61 m²
While every attempt has been made to ensure accuracy, all measurements are approximate.
not to scale. This floor plan is for illustrative purpose only and should be used as such by any prospective tenant or purchaser.



KINGSEND, HA4 7DA

£400,000





Presented in immaculate condition from top to bottom is this two double bedroom, two bathroom first floor apartment set in this sought after boutique development in the heart of Ruislip. Features include ultra modern interiors, long lease, two double bedrooms, ensuite to master, communal gardens, underfloor heating, allocated parking, loft space and nearly 700 sq ft of living accommodation. The property is 0.3 miles away from Ruislip high street and station (Metropolitan & Piccadilly Line) and 0.5 miles away from Sacred Heart Primary School.

Two Double Bedrooms

Two Bathrooms

Long Lease

Loft Space

Ultra Modern Interiors

Communal Garden

Allocated Parking Space

Under Floor Heating

Catchment Area For Fantastic Schools

Walking Distance To Met/Piccadilly Line

