

*David  
Davies*

A large, stylized gold letter 'D' that overlaps the text 'David' and 'Davies'.

**1, Wenford Close, Windle, WA10 6DP**

**£320,000**

*David  
Davies*  *Collection*

# 1, Wenford Close, Windle, WA10 6DP

- New Build
- Three Bedrooms
- High Internal Specification
- 10 Year Warranty LABC
- Detached Property
- En-Suite & W.C
- Two Car Driveway
- FREEHOLD

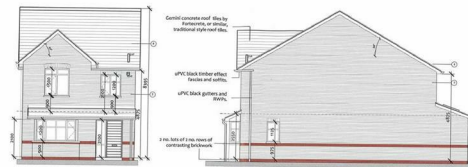
Designed and built by Henderson Homes (Established 1953) to an exceptionally high standard throughout. This three bedroomed property offers all the amenities desired for a modern family. With excellent access to the local highly regarded Bleak Hill Primary School and further to De La Salle High School, these properties are well placed for all local amenities within the Windle/Eccleston areas of St Helens. For commuters the A580 East Lancashire Road/A570 Rainford by pass both lead onwards to most major motorways of the North West.

Awaiting full specification information.

To include: a range of kitchen integrated appliances to include stainless steel oven and hob, fridge/freezer and dishwasher. Ground floor cloaks and en suite facilities, all tiled with white suites, contemporary taps and fittings

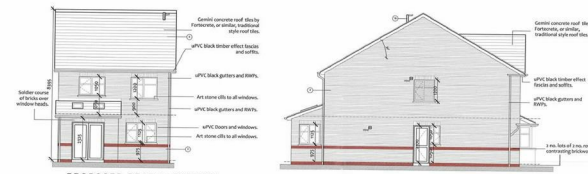
Call our office to register your interest

A non refundable reservation fee is required to secure this property



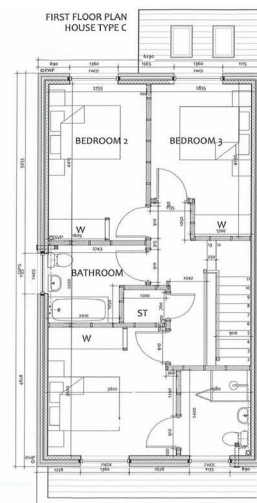
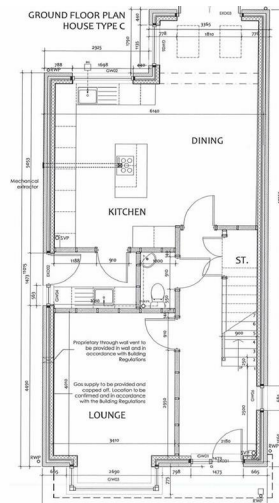
PROPOSED FRONT ELEVATION

PROPOSED SIDE ELEVATION

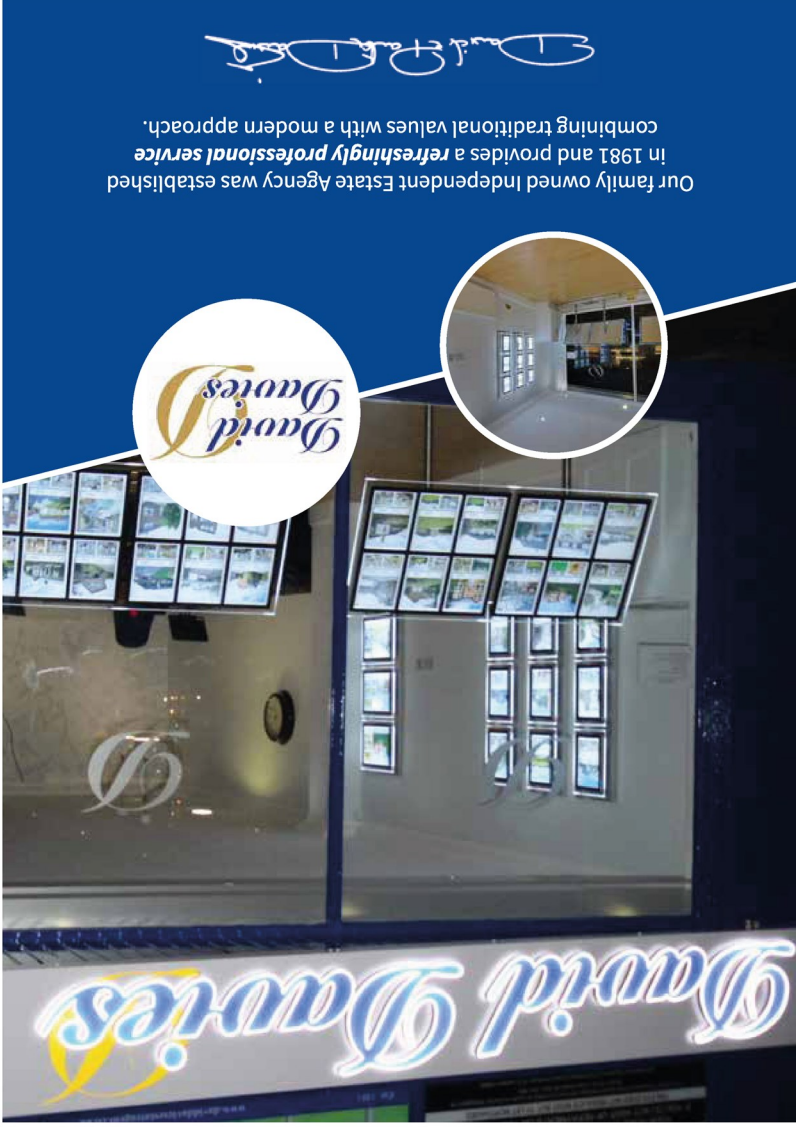


PROPOSED REAR ELEVATION

PROPOSED SIDE ELEVATION





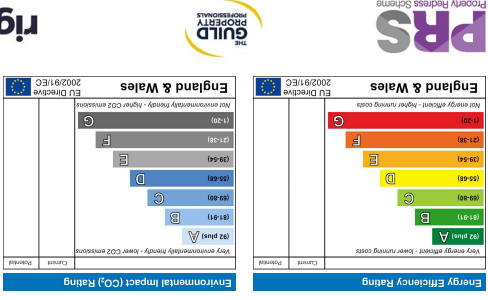


You may download, store and use the material for your own personal use and research. You may not republish, retransmit, redistribute or otherwise make the material available to any party or make the same available on any website, online service or bulletin board of your own or of any other party or make the same available in hard copy or in any other media without the website owner's express prior written consent. The website owner's copyright must remain on all reproductions of material taken from this website.

**MAKING MORTGAGE ADVICE SIMPLE**  
 Speak to one of our advisers on **01744 885555**  
 Allisons Financial Planning Ltd is authorised and regulated by the Financial Conduct Authority.

**AFP**

ALLISONS FINANCIAL PLANNING  
 Independent financial consultants & mortgage specialists



Information on tenant permitted fees can be accessed via the link below  
[www.daviddaviesestateagent.co.uk/tenant](http://www.daviddaviesestateagent.co.uk/tenant)  
 22 Church Road, Rainford, St Helens, WA11 8HE  
 T: 01744 885753  
[sales@daviddaviesestateagent.co.uk](mailto:sales@daviddaviesestateagent.co.uk)  
[lettings@daviddaviesestateagent.co.uk](mailto:lettings@daviddaviesestateagent.co.uk)  
[www.daviddaviesestateagent.co.uk](http://www.daviddaviesestateagent.co.uk)