



Wellington House, Swindon,
Wiltshire, SN1 1EB

Video Tour on request - Available March - Castles are pleased to offer for rent this one double bedroom third floor apartment set in this popular location a short distance from the bus & train stations and the town centre.

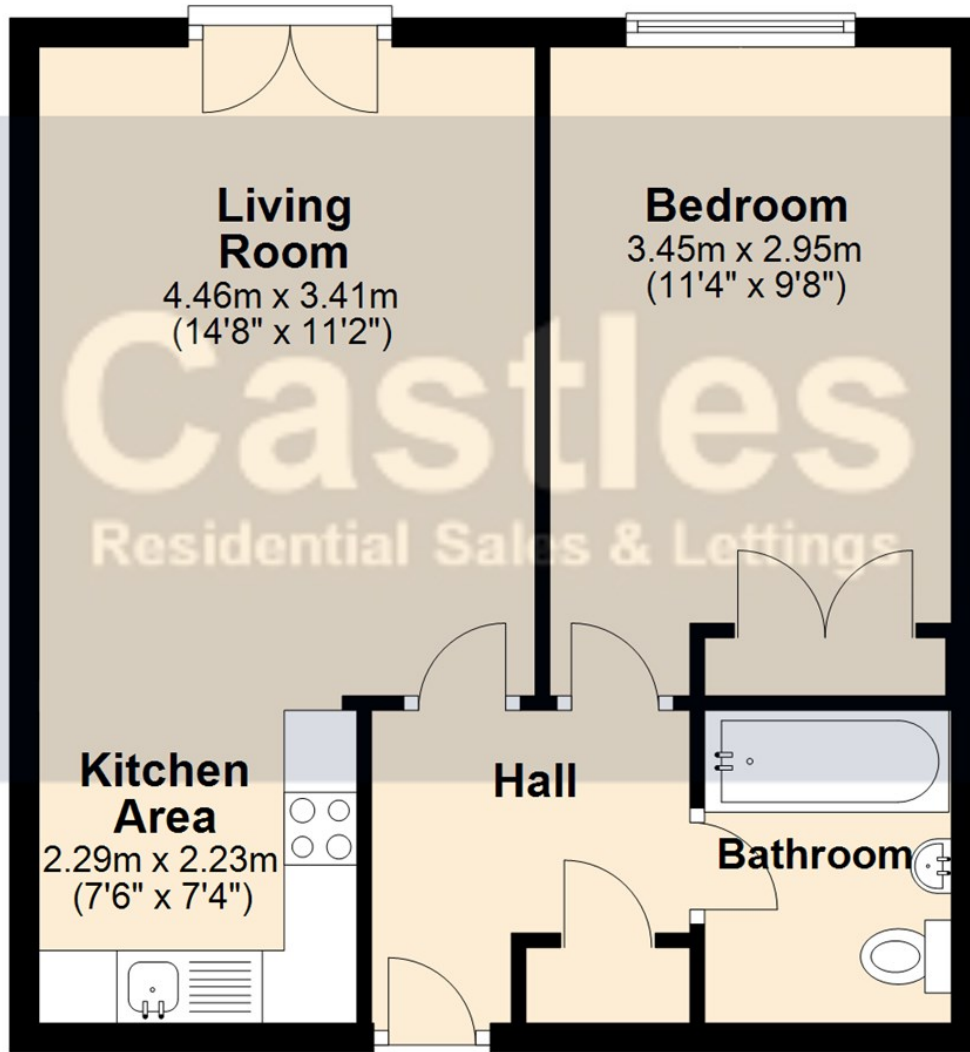
The accommodation comprises of an entrance hall, 14ft lounge, kitchen, 11ft bedroom and fitted bathroom. Benefits include electric heating and double glazed windows.

- Available March
- 1 Double Bedroom
- 3rd Floor Apartment
- 14ft Living Room
- Fitted Kitchen
- White Bathroom
- Video Tour Available
- EPC Rating - tbc

£625 Per Month



Ground Floor



Energy Efficiency Rating		Current	Potential
Very energy efficient - lower running costs			
(92 plus) A		85	88
(81-91) B			
(69-80) C			
(55-68) D			
(39-54) E			
(21-38) F			
(1-20) G			
Not energy efficient - higher running costs			
England & Wales		EU Directive 2002/91/EC	

Environmental Impact (CO ₂) Rating		Current	Potential
Very environmentally friendly - lower CO ₂ emissions			
(92 plus) A			
(81-91) B			
(69-80) C			
(55-68) D			
(39-54) E			
(21-38) F			
(1-20) G			
Not environmentally friendly - higher CO ₂ emissions			
England & Wales		EU Directive 2002/91/EC	



Council Tax Band: A

Viewing

For further information on this property or to arrange a viewing please contact Castles Estate Agents on 01793 611677

These particulars, whilst believed to be accurate are set out as a general outline only for guidance and do not constitute any part of an offer or contract. Intending purchasers should not rely on them as statements of representation of fact, but must satisfy themselves by inspection or otherwise as to their accuracy. No person in this firm's employment has the authority to make or give any representation or warranty in respect of the property.

Castles Estate Agents & Mortgage Services Ltd

Registered Office, 47-49 Commercial Road, Swindon, Wiltshire, SN1 5NX

Company Registration Number: 5511916

Tel: 01793 611677 Email: swindon@castlesproperty.co.uk or lettings@castlesproperty.co.uk