



36 Osborne Mews, Netheredge, Sheffield, S11 9EG

Saxton Mee

36 Osborne Mews

Netheredge

Guide Price

£200,000

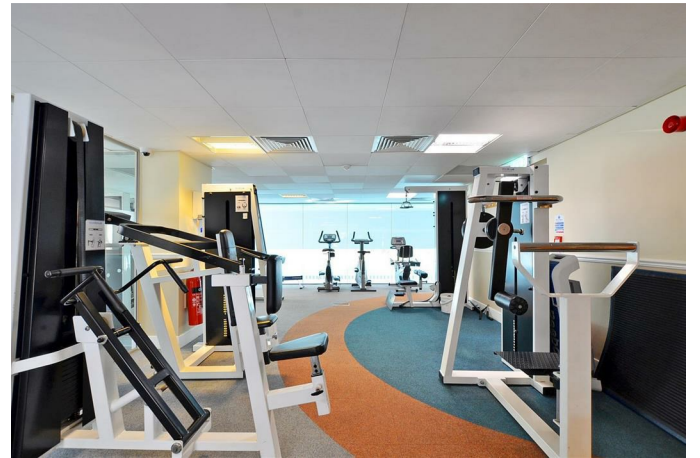
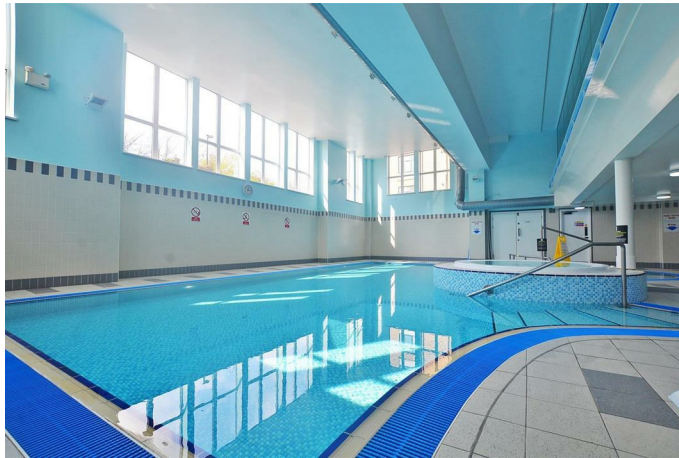
GUIDE PRICE £200,000 - £210,000.

An attractive spacious, two double bedroom, two bathroom third floor apartment located within this luxurious development with great access to good local amenities, Sheffield centre and the open countryside of the Peak District. The exclusive development offers on site leisure facilities including swimming pool, sauna, jacuzzi and gym. Allocated parking, lift access and video phone entry system.

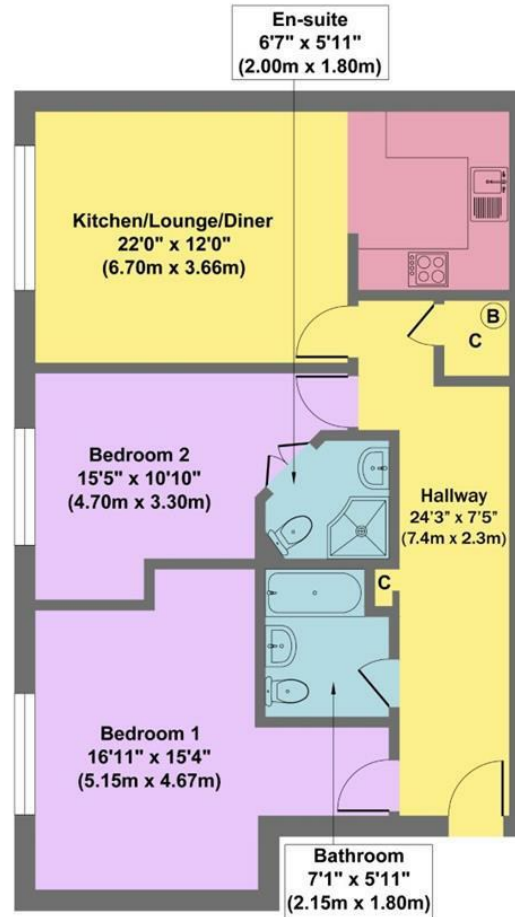
Large reception hall, lounge/dining room opening through to well fitted kitchen with range of appliances. Double bedroom one with en suite shower room, large double bedroom two and family bathroom.

- Popular Award Winning Development
- Lift Access & Designated Parking Space
- On Site Leisure Facilities with Swimming Pool, Sauna and Gym
- Two Large Double Bedrooms, One with En Suite
- Large Open Plan Living Room with Dining Area
- Very Well Fitted Kitchen
- Very Popular Area with Great Amenities
- Convenient for Hospitals and Universities
- EPC Rating: TBC
- Viewing: Banner Cross Office





36 Osborne Mews



Approximate Floor Area
Area 799 sq.ft
(74.23 sq.m.)

Approx. Gross Internal Floor Area 799 sq.ft / 74.23 sq.m

Illustration for identification puposes only ,measurements are approximate, not to scale

While we endeavour to make our sales particulars fair, accurate and reliable, they are only a general guide to the property and, accordingly, if there is any point, which is of particular importance to you, please contact the relevant office. The Agents have not tested any apparatus, equipment, fittings or services and so cannot verify they are in working order. The buyer is advised to obtain verification. Please note all the measurement details are approximate and should not be relied upon as exact. All plans, floor plans and maps are for guidance purposes only and are not to scale. Under no circumstances should they be relied upon as exact or for use in planning carpets and other such fixtures, fittings or furnishings. YOUR HOME IS AT RISK IF YOU DO NOT KEEP UP REPAYMENTS ON A MORTGAGE OR OTHER LOAN SECURED ON IT. 'A Life Assurance policy may be requested.' 'Written Quotations of credit terms available on request.'

Banner Cross
T: 0114 268 3241
E: bannercross@saxtonmee.co.uk
www.saxtonmee.co.uk

Dronfield
T: 01246 290992
E: dronfield@saxtonmee.co.uk

Hathersage
T: 01433 650009
E: hathersage@saxtonmee.co.uk

Bakewell
T: 01629 815307
E: bakewell@saxtonmee.co.uk

Matlock
T: 01629 828250
E: matlock@saxtonmee.co.uk

