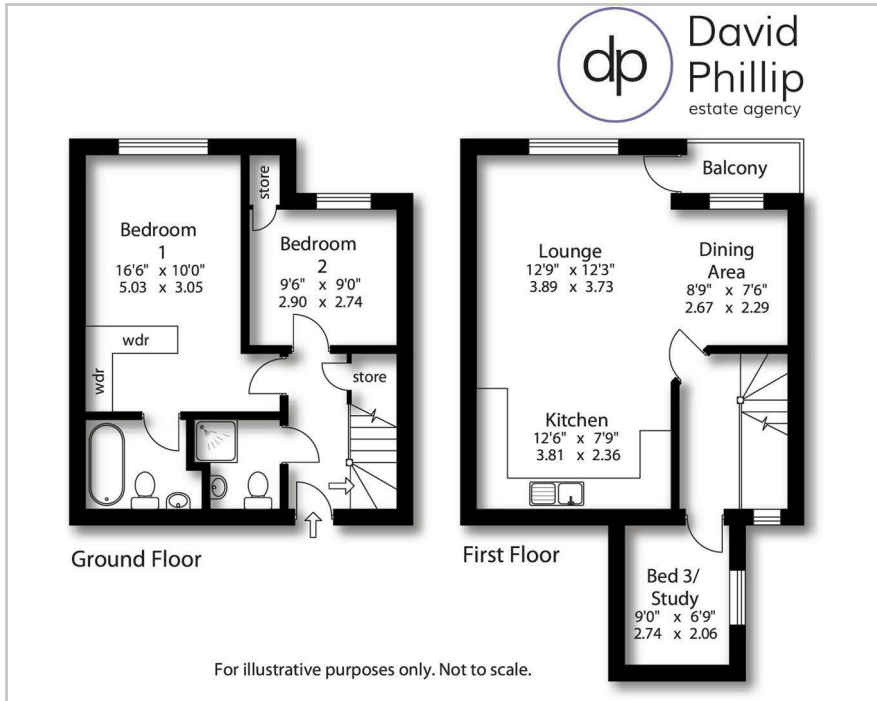




5 High Moor Grange, LS16 9HJ
Asking Price £215,000



Floor Plan



Area Map



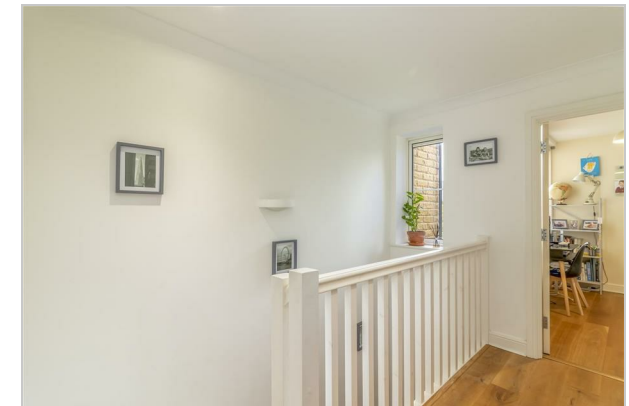
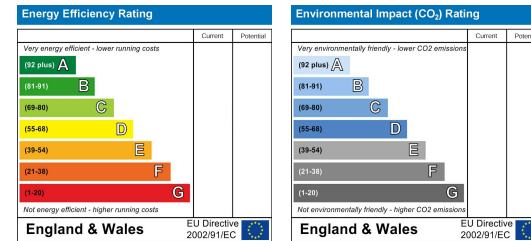
Accommodation

- Duplex Apartment
- Located in Sought after Village of Bramhope
- Secure Gated Complex with Allocated Parking
- Three Bedrooms
- En Suite to Master Bedroom
- Ground Floor
- Great Rental Potential
- INTERNAL VIEWING IS MUST

Viewing

Please contact our David Phillip Estate Agents Office on 01134 676 400 if you wish to arrange a viewing appointment for this property or require further information.

Energy Efficiency Graph



These particulars, whilst believed to be accurate are set out as a general outline only for guidance and do not constitute any part of an offer or contract. Intending purchasers should not rely on them as statements of representation of fact, but must satisfy themselves by inspection or otherwise as to their accuracy. No person in this firm's employment has the authority to make or give any representation or warranty in respect of the property.