



2 Rhodewood Close, Downswood, Maldstone, Kent, ME15 8UR

Price £395,000

An attractive Tudor style detached house situated in a popular cul-de-sac on the periphery of a popular residential development served by a parade of shops and doctors surgery. Mote Park, a local beauty spot, is close by where fine recreational facilities are available including picturesque walks and a Park & Ride bus service to Maidstone town centre, which is approximately 3-miles distance. The adjoining village of Bearsted has a comprehensive range of excellent shops, schools, inns, restaurants and London line station.

The property was constructed approximately 34 years ago and has the benefit of gas fired central heating, UPVC double glazed leaded light style windows and external doors, and is situated on a good sized secluded plot. The well-presented accommodation is arranged as follows:-

AN EXCEPTIONALLY WELL-POSITIONED PROPERTY HIGHLY RECOMMENDED BY THE SOLE AGENTS.



ON THE GROUND FLOOR

Enclosed Entrance Porch

Double glazed entrance door. Laminate flooring. Part glazed inner door to ...

Entrance Hall

Radiator. Staircase to first floor. Part glazed door to lounge.

Downstairs Cloakroom

White suite comprising wash hand basin. Low level WC. Radiator. Part tiled walls. Laminate flooring. Double glazed window.

Attractive Lounge 13'6" x 12' (4.11m x 3.66m)

Open fireplace with exposed brick breast and tortoise firebox. Two radiators. Under stairs cupboard. Double glazed window. Dividing arch to ...

Dining Room 11'3" x 7'9" (3.43m x 2.36m)

Radiator. Double glazed French doors to rear garden. Dividing arch to ...

Kitchen 10'6" x 7'6" (3.20m x 2.29m)

White doored units comprising stainless steel sink unit with cupboards and drawers under. Range of floor cupboards with shelves, drawers and working surface above. Matching wall cupboards. Stainless steel Bosch gas hob with stainless steel cooker hood. Built-in stainless steel oven and microwave. Plumbing for washing machine. Vinyl floor covering. Radiator. Part tiled walls. Double glazed window and door to side.

ON THE FIRST FLOOR

Landing

Double glazed window. Airing cupboard housing lagged hot water tank. Access to roof space.

Bedroom One 12'6" x 9' (3.81m x 2.74m)

Double glazed window. Radiator. Built-in double wardrobe cupboard with sliding mirrored doors.

Bedroom Two 11' x 9' (3.35m x 2.74m)

Double glazed window with internal shutter. Radiator.

Bedroom Three 9'6" x 6'3" (2.90m x 1.91m)

Double glazed window. Radiator. Cupboard housing 2-year old approx Ideal gas fired boiler for central heating and domestic hot water.

Bathroom

White suite comprising panelled bath. Pedestal wash hand basin. Low level WC. Radiator. Part tiled walls. Laminate flooring. Double glazed window.

EXTERNALLY

Large Attached Garage 18'3" x 9'6" (5.56m x 2.90m)

Up and over door to front. Personal door to rear. The garage is approached by a drive which provides additional parking facilities.

Gardens

The property is situated on a good sized plot having a frontage of approximately 35' and laid to lawn with various trees and shrubs. The GOOD SIZED REAR GARDEN measures approximately 40' x 35' and is well-screened offering a high degree of seclusion.

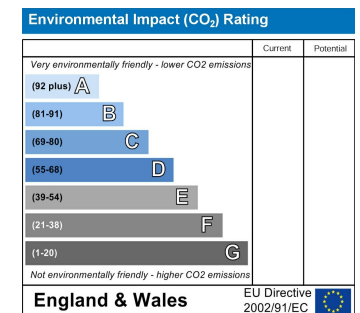
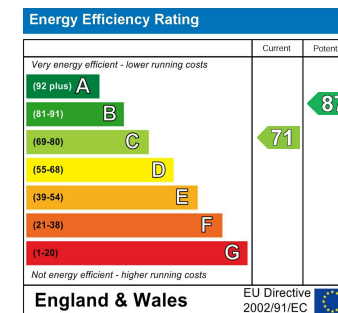
The garden comprises extensive lawned area with numerous trees, shrubs and raised flower borders. Extensive paved patio and decked area. Gate to side. Outside water and lighting.

VIEWING

Strictly by arrangement with the Agent's Bearsted Office: 132 Ashford Road, Bearsted, Maidstone, Kent ME14 4LX. Tel: 01622 739574.

DIRECTIONS

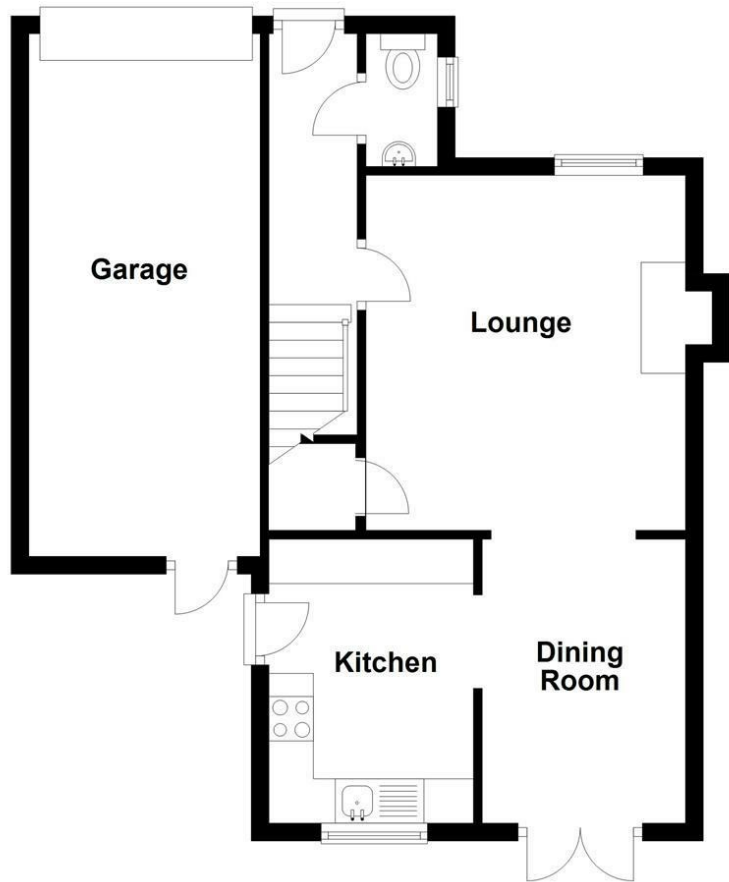
From the Agent's Bearsted office proceed towards Maidstone on the A20 Ashford Road. At the traffic lights, turn left into Willington Street. At the bottom of the hill, turn left into Deringwood Drive. After a short distance, turn right into Church Road and first left into Monkdown, where Rhodewood Close will be found on the right hand side.



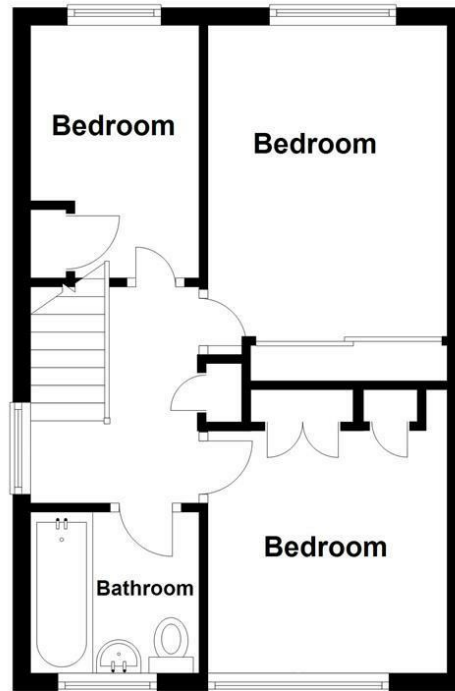
Page & Wells limited for themselves and for the vendors of this property whose agents they are give notice that: 1. These particulars do not constitute any part of, an offer or a contract. 2. All statements contained in these particulars as to this property are made without responsibility on the part of Page & Wells Limited or the Vendor. 3. None of the statements contained in these particulars as to the property is to be relied on as statements or representations of fact. 4. Any intending purchaser must satisfy himself by inspection or otherwise as to the correctness of each of the statements contained in these particulars. 5. The vendor does not make or give, and neither Page & Wells Limited nor any person in their employment has any authority to make or give any representation whatsoever in relation to this property. These particulars are supplied on the understanding that all negotiations are carried out throughout Page & Wells Limited. Properties with a reference prefixes EAA are those which Page & Wells Limited disclose an interest in accordance with the provisions of the Estates Agents Act 1979



Ground Floor



First Floor



Total area: approx. 941.7 sq. feet

