



Hibberd Road Hillsborough Sheffield S6 4BF
Price £170,000

Hibberd Road

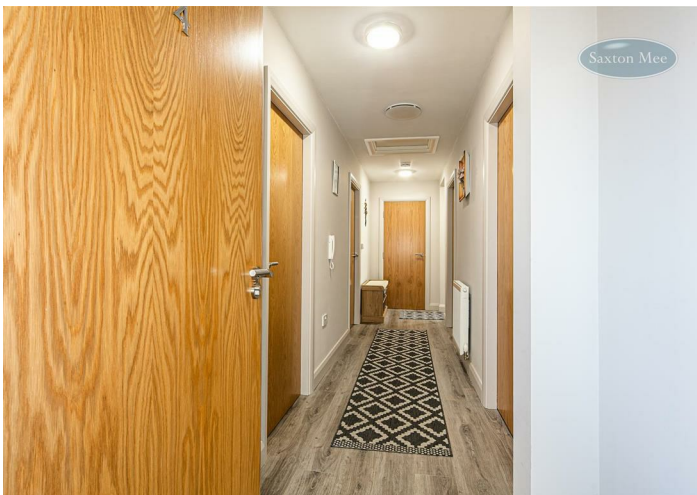
Sheffield S6 4BF

Price £170,000

Situated in this quiet back water location is this recently converted, two double bedroom, first floor apartment with allocated parking, communal entrance shared with only one apartment, uPVC double glazing, positive input ventilation system and a traditional wet heating system with electric boiler. In brief, the well presented living accommodation comprises: from the communal entrance hall stairs lead to the apartment. A private entrance door opens into the entrance hall with intercom telephone system. Access into the boarded loft space. Two storage cupboards, one benefiting from housing and plumbing for a washing machine and tumble dryer and one housing the hot water cylinder. Excellent size lounge/dining room. Separate modern and contemporary kitchen having a range of wall, base and drawer units. Integrated appliances include fridge, freezer, dishwasher, electric oven with four ring hob over and extractor. Master bedroom benefiting from a fitted wardrobe. Modern bathroom with a white suite and comprising bath with overhead shower, WC and wash basin set in a vanity unit. Double bedroom two.

- TWO DOUBLE BEDROOMS
- EXCELLENT STORAGE
- COMMUNAL GARDENS
- MODERN ACCOMMODATION
- VIEWING RECOMMENDED
- ALLOCATED PARKING SPACE
- 8 YEARS LEFT ON THE ARCHITECT CERTIFICATE





OUTSIDE

Allocated parking space. Communal gardens.

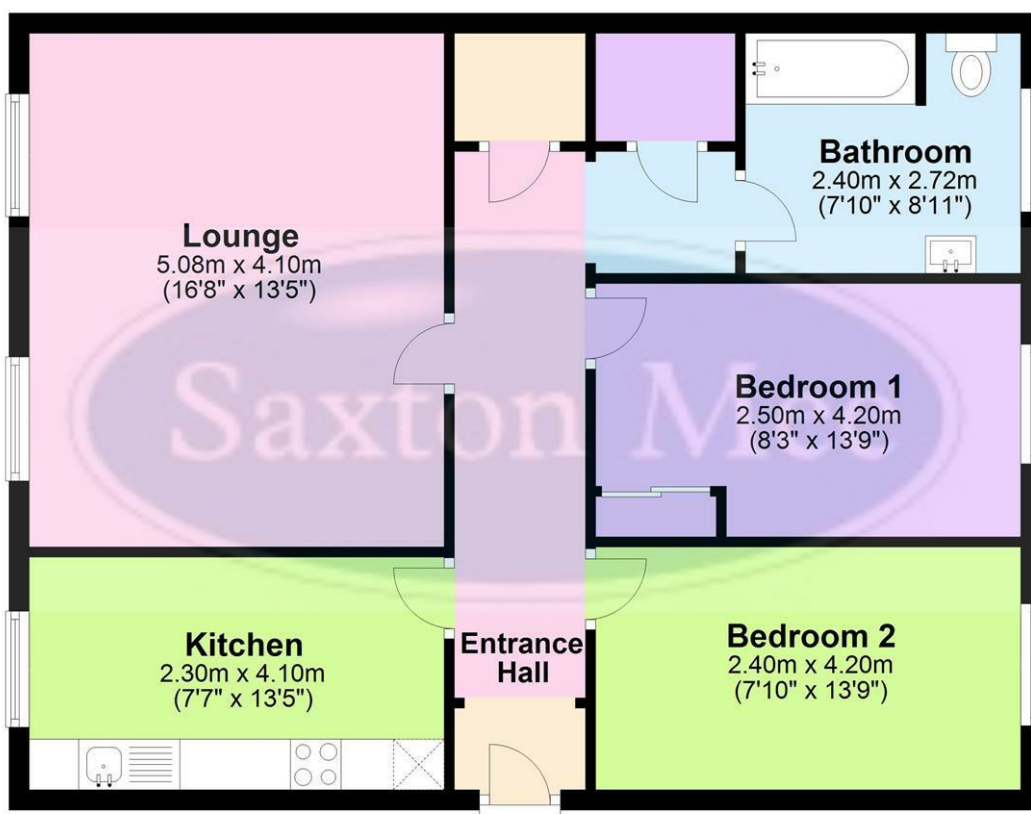
LOCATION

Country walks close by. Regular public transport. Easy access to Hillsborough Centre with its fantastic array of local amenities including butchers, bakers, greengrocers, beauty salons, cafes, takeaways and public houses. A short journey into Sheffield City Centre.

Whilst we endeavour to make our sales particulars fair, accurate and reliable, they are only a general guide to the property. If there is any point which is of particular importance to you, please contact the relevant office. The Agents have not tested any apparatus, equipment, fittings or services and so cannot verify they are in working order. The buyer is advised to obtain verification. All plans, floor plans and maps are for guidance purposes only and are not to scale. Please note all measurements are approximate and should not be relied upon as exact. Under no circumstances should they be relied upon as exact or for use in planning carpets and other such fixtures, fittings or furnishings. YOUR HOME IS AT RISK IF YOU DO NOT KEEP UP REPAYMENTS ON A MORTGAGE OR OTHER LOAN SECURED ON IT.

First Floor Apt

Approx. 73.3 sq. metres (788.6 sq. feet)



Total area: approx. 73.3 sq. metres (788.6 sq. feet)

Apartment 4, 15 Hibberd Road, Sheffield

Crookes
Hillsborough
Stocksbridge

245 Crookes, Sheffield S10 1TF
82 Middlewood Road, Sheffield S6 4HA
462 Manchester Road, Sheffield S36 2DU

T: 0114 266 8365
T: 0114 231 6055
T: 0114 287 0112

www.saxtonmee.co.uk

