



SAMUEL WOOD

39 Stanton Road, Ludlow, Shropshire, SY8 2PF, SY8 2PF

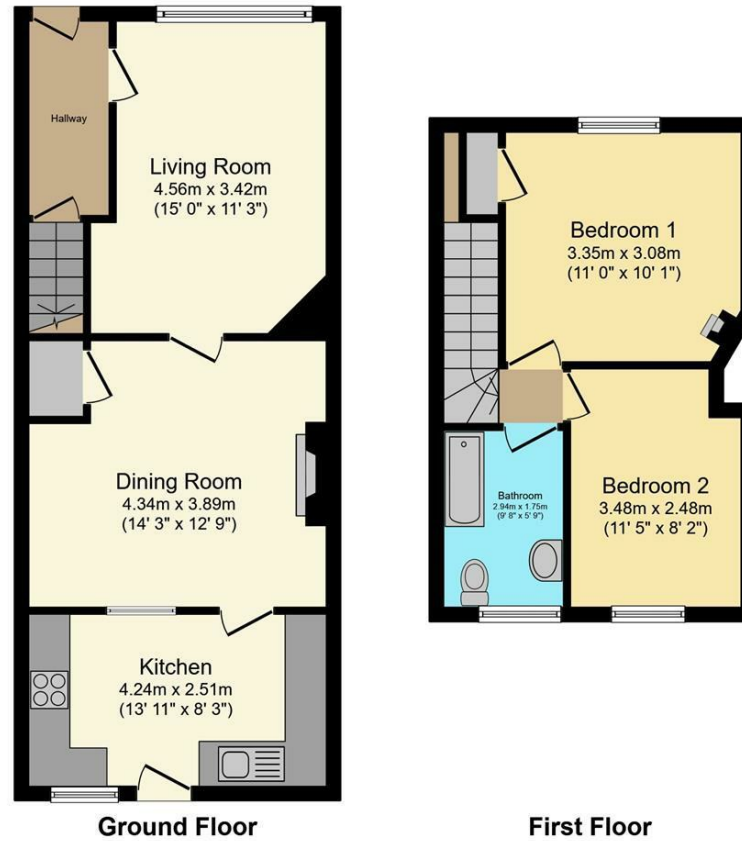
£600 PCM



This well presented 2 bedroom mid terraced house is located in a popular residential area on the outskirts of Ludlow and benefits from gardens to both front and rear and parking for 2 vehicles. Accommodation which is well presented has upvc double glazing and gas fired heating to include: Spacious Kitchen, Living Room, Conservatory, First Floor Landing with 2 Bedrooms and Bathroom. EPC D



Floor Plans



This Floor Plan is for illustration purposes only and may not be representative of the property. The position and size of doors, windows and other features are approximate. Unauthorized reproduction prohibited. © PropertyBOX

We take every care in preparing our sales details. They are checked and usually verified by the Vendor. We do not guarantee appliances, alarms, electrical fittings, plumbing, showers etc. You must satisfy yourself that they operate correctly. Room sizes are approximate; they are usually taken in metric and converted to imperial. Do not use them to buy carpets or furniture. We cannot verify the tenure, as we do not have access to the legal title; we cannot guarantee boundaries or rights of way so you must take the advice of your legal representative. No person in the employment of or representing Samuel Wood has any authority to make any representation or warranty whatever in relation to this property. If there is any point which is of particular importance to you, please contact the office and we will be pleased to check the information. Do so particularly if contemplating travelling some distance to view. Applicants are advised that the majority of our shots are taken with a wide angle lens.

CONTEMPORARY AGENCY • TRADITIONAL VALUES

2 Shoplatch, Shrewsbury, Shropshire, SY1 1HF

Tel: 01743 272710 | shrewsbury@samuelwood.co.uk