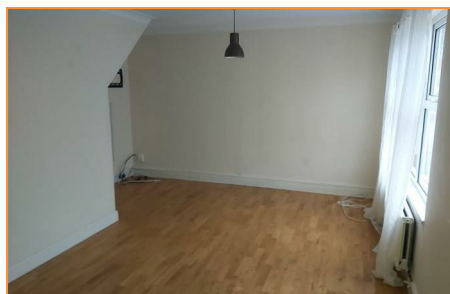


11 Middle Pasture, Peterborough, Cambridgeshire, PE4 5AU

£205,000

Ideal family home located in the desirable area of Werrington. The property comprises of a good size lounge leading through to the kitchen/diner with access to a conservatory, then garden. To the first floor is the master bedroom with storage, a further double bedroom, single and family bathroom. The rear benefits from a enclosed garden. To the side is off road parking



PropertyLine

25 Alexandra Road
Peterborough
PE1 3DE

T 01733 777788

www.epropertyline.com

Info@epropertyline.com

Porch

6' x 2'11 (1.83m x 0.89m)

Half brick built, surrounded by uPVC double glazed windows, fitted carpet, door to:

Lounge

17'9 x 4'01 (5.41m x 1.24m)

UPVC double glazed window to front, radiator, wooden flooring, stairs to first floor, opening to:

Kitchen/Diner

17'9 x 9'2 (5.41m x 2.79m)

Fitted with a matching range of base and eye level units with worktop space over, 1+1/2 bowl stainless steel sink with mixer tap, built-in dishwasher, plumbing for washing machine, space for fridge/freezer, fitted electric oven, built-in four ring electric hob with extractor hood over, radiator, tiled flooring, sliding door to conservatory.

Conservatory

14'11 x 10'0 (4.55m x 3.05m)

Half brick built, surrounded by uPVC double glazed windows, tiled flooring, French doors to garden.

Bedroom One

11'9 x 9'10 (3.58m x 3.00m)

UPVC double glazed window to front, laminate flooring.

Bedroom Two

10'7 x 10'6 (3.23m x 3.20m)

UPVC double glazed window to rear, laminate flooring.

Bedroom Three

7'7 x 6'11 (2.31m x 2.11m)

UPVC double glazed window to front, fitted carpet.

Bathroom

6'9 x 6'2 (2.06m x 1.88m)

Fitted with three piece suite comprising deep panelled bath, pedestal wash hand basin and low-level WC, tiled surround, towel rail heater, Upvc double glazed window to rear, tiled flooring.

Outside

To the front there is off-road parking. The rear garden is mainly laid to gravel with a patio area and is surrounded by timber panelled fencing.

