



Hemnall Street, Epping, CM16

BUTLER & STAG



The Entire Top Floor In One of Five Compact, One Bedroom Apartments Located In The Heart of Epping High Street.

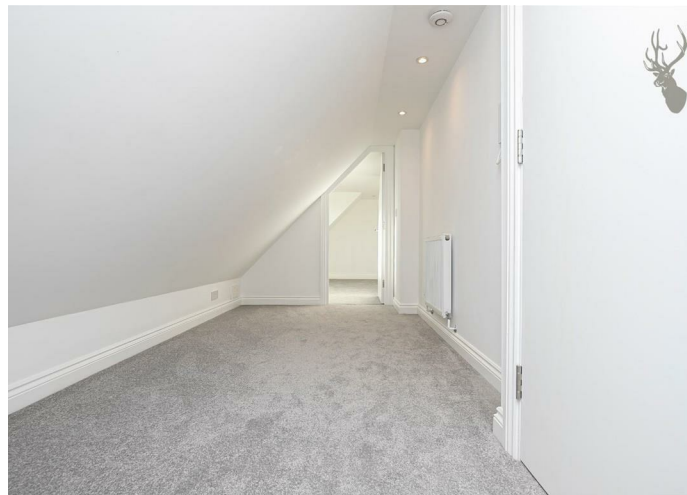


Leasehold

- Entire Top Floor Apartment
- Full Fitted Kitchen
- Potential To Expand
- One Double Bedroom
- Walking Distance To Epping Station
- Private Communal Garden

The apartments have been designed thoughtfully with a modern, busy lifestyle in mind. The top floor apartment includes one double bedroom with a separate fully-fitted kitchen with integrated appliances, fitted shower rooms and a communal garden.

Feel connected to every part of the electric lifestyle Epping has to offer. Clasper House stands in the very heart of the town centre, meaning you are a short stroll away from all the bars, restaurants and shops the community has to offer. As a cultural hub, Epping has great links to London via the Central Line and motorways nearby, making it easy to work and socialise in the capital.

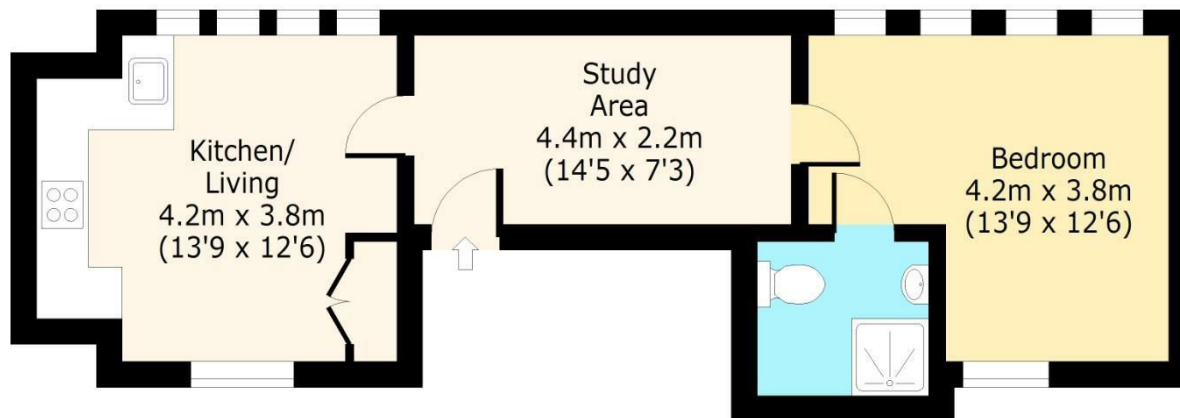




Clasper House

Second Floor

Approx. 43.24 Sq. meters (465 Sq. feet)



Total area: approx. 43.24 Sq. meters (465 Sq. feet)

For illustration purposes only - not to scale

www.lpaplus.com

IMPORTANT NOTICE - These particulars have been prepared in good faith and they are not intended to constitute part of an offer or contract. We have not performed a structural survey on this property and the services, appliances an specific fittings have not been tested. All photographs, measurements, floor plans and distances referred to are given as a guide and should not be relied upon.

BUTLER & STAG

☎ 01992 667666

🏠 4 Forest Drive, Theydon Bois, Essex, CM16 7EY

✉ theydon@butlerandstag.com

www.butlerandstag.uk