



13 Bardsey Place

Longbenton, NE12 8NU

SEMI DETACHED - FANTASTIC GARDENS - GREAT CONDITION

Brunton Residential are delighted to offer for sale this three bedroom home located on Bardsey Place in Longbenton. This home is fantastic condition throughout and has some of the best external spaces we have seen for this type of home.

£145,000

13 Bardsey Place

Longbenton, NE12 8NU



Brunton Residential are delighted to offer for sale this three bedroom home located on Bardsey Place in Longbenton. This home is fantastic condition throughout and has some of the best external spaces we have seen for this type of home. Internal accommodation briefly comprises; entrance hallway with access to lounge with windows to the front & rear and a spacious dining kitchen with a range of fitted units & appliances with door access to the rear gardens. The first floor consists of a master bedroom, bedrooms two and three and a family bathroom. Externally there is a garden to front laid mainly to lawn with pathway access to the property while to the rear is a very large lawned & paved garden with fenced boundaries. It has a Westerly aspect and has mainly bungalows to the rear meaning it is not overlooked. For more info and to book your viewing please call our Great Park sales team on 01912368347

ON THE GROUND FLOOR

Entrance

Lounge

18'2" x 11'5" (5.55 x 3.49)

Dining room

13'5" x 9'2" (4.10 x 2.81)

Kitchen

8'10" x 6'10" (2.70 x 2.10)

Bedroom

10'5" x 8'9" (3.18 x 2.68)

Bedroom

9'0" x 7'2" (2.75 x 2.20)

Bathroom

6'3" x 5'4" (1.92 x 1.65)

WC

Disclaimer.

ON THE FIRST FLOOR

Bedroom

12'3" x 11'1" (3.75 x 3.40)



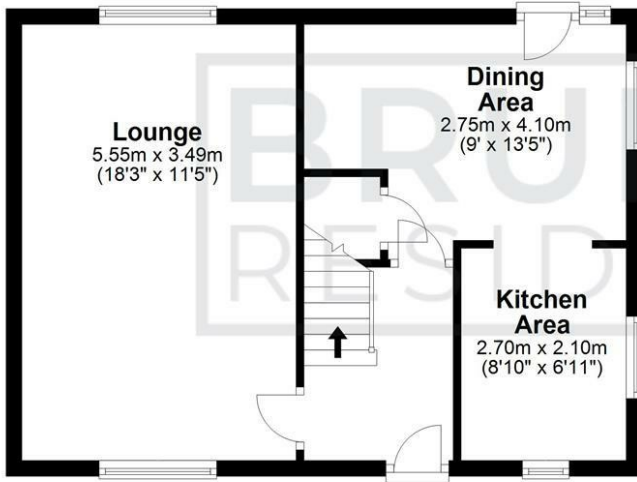
- SEMI DETACHED
- WESTERLY ASPECT TO REAR
- THREE BEDROOMS
- GREAT LOCATION
- LARGE GARDENS
- FANTASTIC CONDITION



Floor Plan

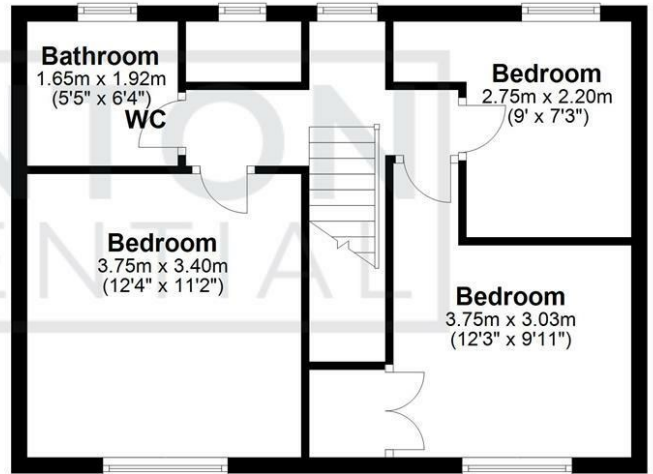
Ground Floor

Approx. 42.8 sq. metres (460.9 sq. feet)



First Floor

Approx. 42.4 sq. metres (456.9 sq. feet)



Total area: approx. 85.3 sq. metres (917.7 sq. feet)

All measurements are approximate and are for illustration only.
Plan produced using PlanUp.

These particulars, whilst believed to be accurate are set out as a general outline only for guidance and do not constitute any part of an offer or contract. Intending purchasers should not rely on them as statements of representation of fact, but must satisfy themselves by inspection or otherwise as to their accuracy. No person in this firm's employment has the authority to make or give any representation or warranty in respect of the property.

