



Westcroft Crescent, Sheffield, S20 8EG

%priceQualifier% %price%

Westcroft Crescent, Sheffield, S20 8EG

Overview

- Two bedroom semi detached home
- Off road parking
- Enclosed rear garden
- Close to fantastic amenities
- AVAILABLE NOW!
-



Description

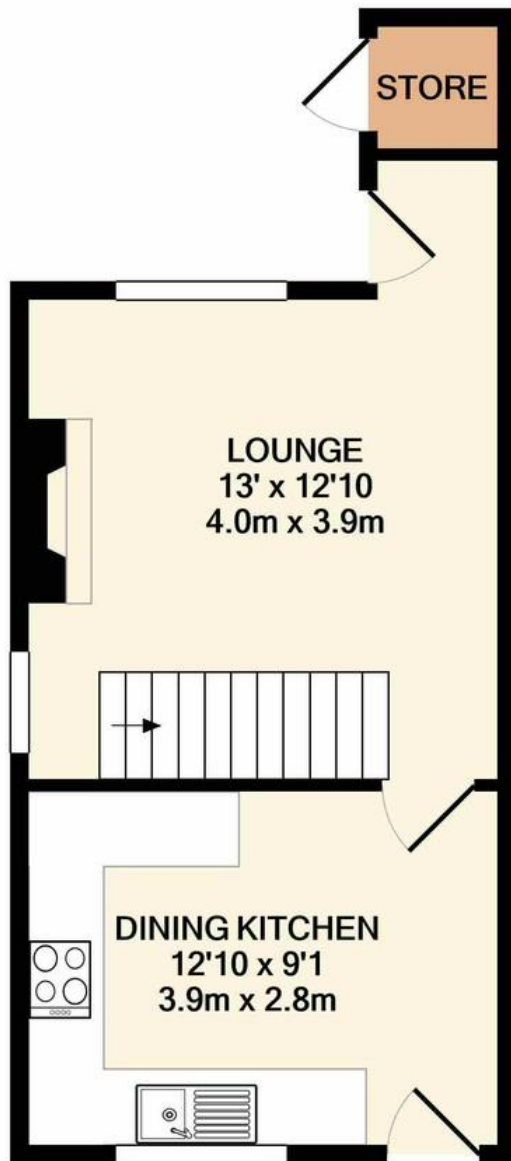
AVAILABLE NOW. Whether you want to make an ideal starter home or downsize, this beautiful two bedroom mid-town house is ready to drop your bags and move straight in. With convenient access to local amenities such as Crystal Peaks, reputable schools and transport links into the City Centre this is the perfect family home. The property comprises of a very spacious entrance into the house, a cosy living room and a very modern kitchen. Upstairs is a large 3 piece family bathroom. Both bedrooms are spacious doubles, making this property suitable for a couple or a small family.

Call now before you miss out.

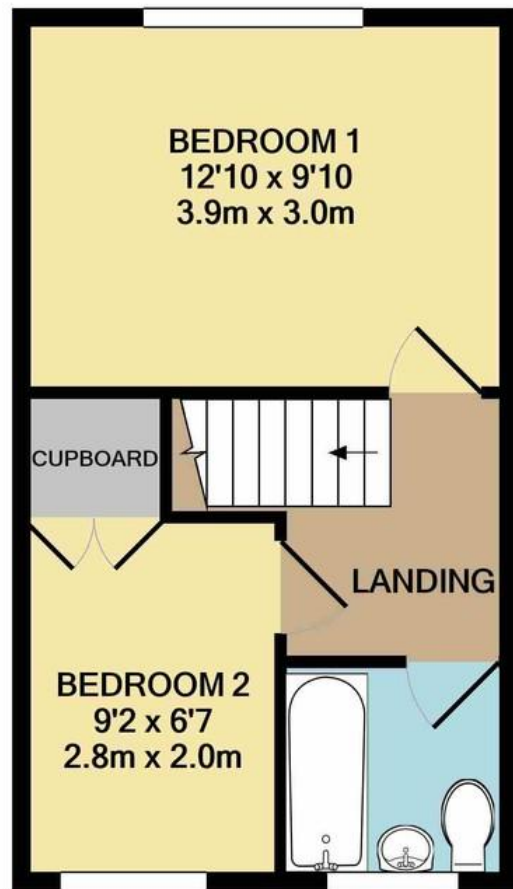




%epcGraph_c_1_718%



GROUND FLOOR
APPROX. FLOOR
AREA 318 SQ.FT.
(29.5 SQ.M.)



1ST FLOOR
APPROX. FLOOR
AREA 292 SQ.FT.
(27.1 SQ.M.)

TOTAL APPROX. FLOOR AREA 610 SQ.FT. (56.6 SQ.M.)

Whilst every attempt has been made to ensure the accuracy of the floor plan contained here, measurements

 Find us on Facebook
Crucible Sales and Lettings

 Follow us on Twitter
@CrucibleSaleLet

 Follow us on Instagram
@CrucibleSaleLet

Wickersley Office
234 Bawtry Road
Wickersley, Rotherham
S66 1AA
T: 01709 500 333

Chapelton Office
11 Lound Side
Chapelton, Sheffield
S35 2UQ
T: 0114 245 9696

Dun Works
Kelham Island
Sheffield
S3
T: 0114 241 3430

PRS Property Redress Scheme
sales@cruciblesalesandlettings.co.uk
www.cruciblesalesandlettings.co.uk

