

**MADISON BROOK**  
INTERNATIONAL



ASHTON ROAD, STRATFORD, E15 1DP



ASHTON ROAD, STRATFORD, E15

£585,000



### PROPERTY SUMMARY

With abundant living space throughout, this substantial four bedroom house offers beautiful features, front & rear garden and off-street parking for 2 cars with the rear garage.

Arranged over two floors the property comprises a light and spacious reception room, separate dining room, separate kitchen, four good-sized bedrooms, smart three piece bathroom, guest cloakroom, separate WC and off-street parking. The property additionally offers ample storage throughout.

Ashton Road is a peaceful residential location close to the many shops, bars and restaurant on offer in Westfield Shopping Centre which is only a short walk away.





### PROPERTY FEATURES

- + Four Bedroom House
- + Set Over 2 Floors
- + 1,200 Sq. Ft. Internally
- + Front & Rear Garden
- + Close to Stratford Underground Station

### PROPERTY FEATURES

- + Short Walk to Westfield
- + Parking For 2 Cars At The Rear
- + Quiet Cul De Sac
- + Rear Garage
- + Council Tax: Band D

# FOR SALE

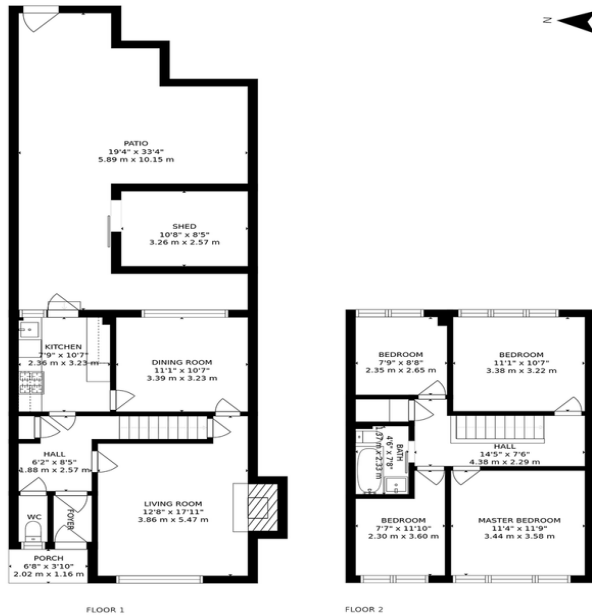
ASHTON ROAD, STRATFORD, E15

£585,000 FREEHOLD



Ashton Rd, E15  
4 bedroom house

MADISON BROOK  
INTERNATIONAL



Approx. Internal Area  
1200 Sqft / 112 Sqm  
(Excl. Patio)

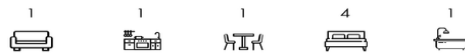
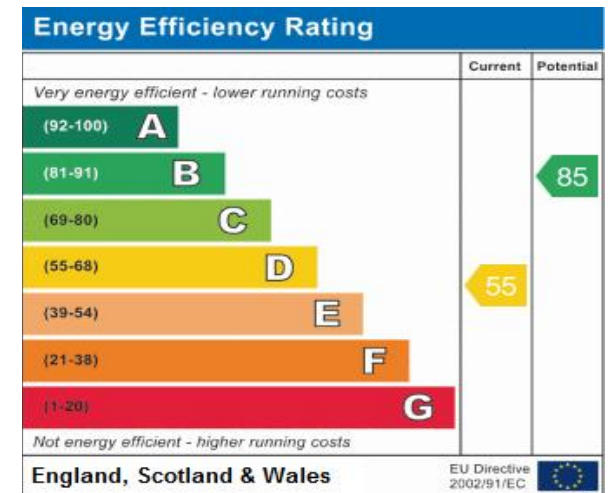


Illustration for identification purposes only.  
Measurements are approximate. Not to scale.

- + Ref: 12222
- + Availability: For Sale
- + Bedrooms : 4
- + Bathrooms: 1
- + Reception Rooms: 1
- + Tenure: Freehold



Madison Brook International  
Unit B, 20 Western Gateway, Royal Victoria Dock, London, E16 1BS  
T: 020 3946 6000  
E: docklands@madisonbrook.com  
[MADISONBROOK.COM](http://MADISONBROOK.COM)

MADISON BROOK  
INTERNATIONAL

Madison Brook International @MadisonBrookInt

