

Woodholls



Blythe Road, London, W14 0HA
£1,700 Per month

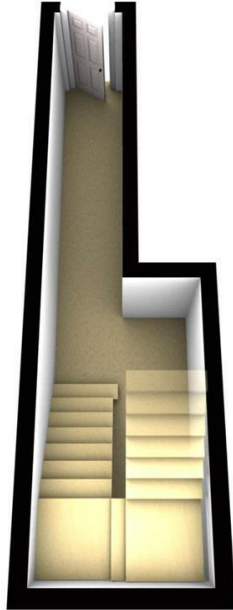
AVAILABLE NOW! Recently redecorated throughout is this lovely two DOUBLE bedroom split level apartment which offers spacious accommodation over 900 sq. ft. The apartment has its own private access with stairs leading to the first floor, there is a kitchen/breakfast room with white goods, equally spacious 16ft living room. The second floor has the two double bedrooms which both have the added benefit of fitted wardrobes and lastly the three piece shower room. The property offers elegant period characteristics with original sash windows and high pitched ceilings, creating a sense of light and space. This apartment is conveniently placed as it is situated within walking distance to Kensington (Olympia) station, it is just moments from Brook Green and offers an array of amenities nearby.

44 Buckingham Street, Aylesbury, Bucks, HP20 2LL

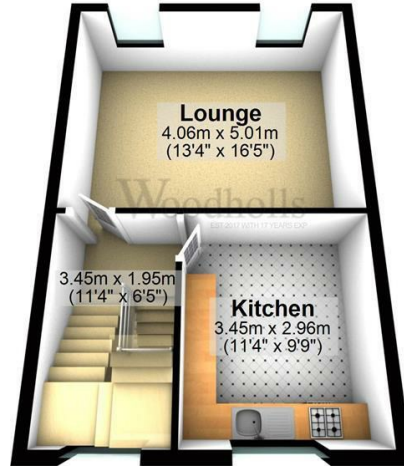
Telephone: 01296 433 393 Email: info@woodholls.co.uk Website: www.woodholls.co.uk



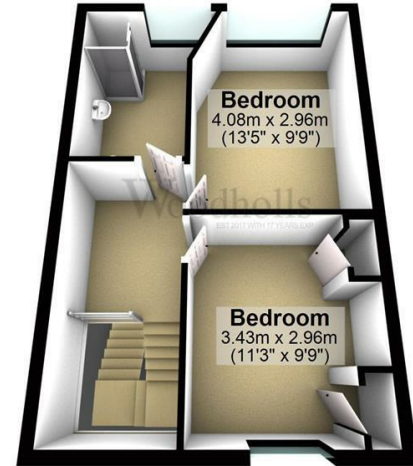
Ground Floor
Approx. 10.8 sq. metres (116.6 sq. feet)



First Floor
Approx. 38.1 sq. metres (410.1 sq. feet)



Second Floor
Approx. 38.1 sq. metres (410.1 sq. feet)



Total area: approx. 87.0 sq. metres (936.9 sq. feet)



Energy Efficiency Rating		
	Current	Potential
Very energy efficient - lower running costs		
(92 plus) A		
(81-91) B		
(69-80) C		
(55-68) D		
(39-54) E		
(21-38) F		
(1-20) G		
Not energy efficient - higher running costs		
England & Wales		EU Directive 2002/91/EC
Environmental Impact (CO ₂) Rating		
	Current	Potential
Very environmentally friendly - lower CO ₂ emissions		
(92 plus) A		
(81-91) B		
(69-80) C		
(55-68) D		
(39-54) E		
(21-38) F		
(1-20) G		
Not environmentally friendly - higher CO ₂ emissions		
England & Wales		EU Directive 2002/91/EC

44 Buckingham Street, Aylesbury, Bucks, HP20 2LL

Telephone: 01296 433 393 Email: info@woodholls.co.uk Website: www.woodholls.co.uk