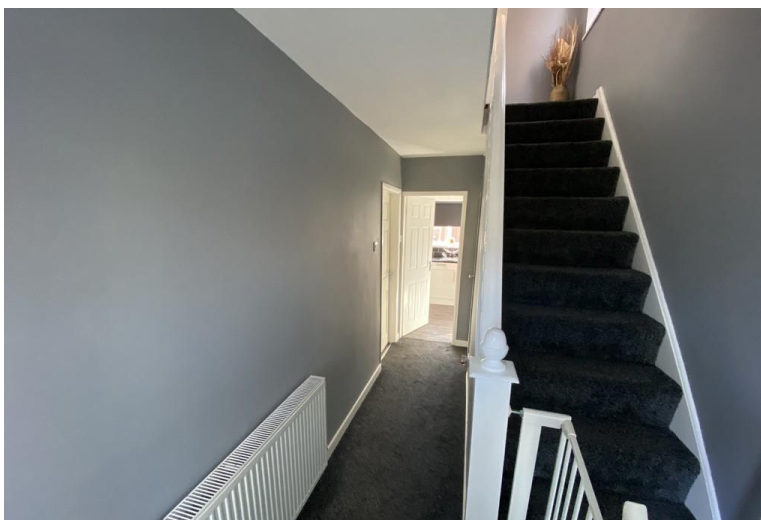




Black and White
CLEARLY A BETTER SERVICE

166 TILE CROSS ROAD, BIRMINGHAM, B33 0LT
£250,000





166 Tile Cross Road

- 4 Bedrooms
- Loft Conversion
- Semi Detached

Ground Floor

Driveway

Parking for two cars, side access to Garage

Porch

UPVC double glazed front door, uPVC double glazed frosted door to:

Hall

Two uPVC opaque double glazed windows to front, central heating radiator, new fitted carpet , carpeted stairs with under-stairs storage, door to:

Kitchen/Diner 5.17m (16'11") x 2.72m (8'11")

With modern style counter tops and cupboards, 1+1/2 bowl stainless steel sink, built-in cooker, uPVC double glazed window to rear, central heating radiator, laminate flooring, spotlighting in ceiling, uPVC double glazed back double door to rear.



Living Room 5.54m (18'2") x 2.00m (6'7")

Double glazed UPVC bay window to front, central heating radiator, laminate flooring, coving to ceiling, electric fireplace.

Garden

Patio and grass area.

First Floor

Landing

Opaque double glazed window to side, fitted carpet, carpeted stairs, doors to:

Bedroom 1 4.34m (14'3") x 3.16m (10'4")

Double glazed window to front, radiator, fitted carpet, central heating, door to:

Bedroom 2 3.92m (12'10") x 3.16m (10'4")

UPVC double glazed window to rear, radiator, fitted carpet, central heating, door to:

Bedroom 4 2.90m (9'6") x 1.91m (6'3")

Window to front, radiator, fitted carpet, door to:

Bathroom

Fitted with bath, wash hand basin and tiled shower cubicle with folding glass screen, opaque upvc double glazed window to rear, heated towel rail, tiled flooring, full height tiling to wall.

Second Floor

Bedroom 3 4.11m (13'6") x 3.66m (12')

Two uPVC double glazed windows to rear, radiator, fitted carpet, central heating, door.



