



Gayhurst Road, London, E8 3EH £1,100,000 Freehold

KINGS GROUP are pleased to offer this THREE BEDROOM TERRACED HOUSE, on Gayhurst Road, E8. With THREE RECEPTION ROOMS, a fitted kitchen, downstairs W.C, three double bedrooms, three piece bathroom upstairs, a 65ft (approx.) REAR GARDEN with side access and outbuilding. This property is situated in the heart of Hackney and is a few minutes from London Field and Hackney Central Station as well as multiple buses to surrounding areas. In addition, local amenities, eateries, bars and shops are within easy reach of the property.

Please call us to arrange a viewing: 020 8510 0808

Gayhurst Road, London, E8 3EH

KINGS GROUP are pleased to offer this THREE BEDROOM TERRACED HOUSE, on Gayhurst Road, E8. With THREE RECEPTION ROOMS, a fitted kitchen, downstairs W.C, three double bedrooms, three piece bathroom upstairs, a 65ft (approx.) REAR GARDEN with side access and outbuilding. This property is situated in the heart of Hackney and is a few minutes from London Field and Hackney Central Station as well as multiple buses to surrounding areas. In addition, local amenities, eateries, bars and shops are within easy reach of the property.

Bedroom Three 11'4" x 9'6" (3.47m x 2.90m)

Single glazed window to side aspect, coved ceiling, power points, carpeted flooring.

Bathroom 9'6" x 7'7" (2.92m x 2.32m)

Single glazed window to rear, part tiled walls, panel enclosed bath, wash hand basin, boiler unit, laminate flooring.

Garden 65'7" (20.0m)

Please call us to arrange a viewing: 020 8510 0808

Entrance

Front door to

Hallway

Doors to reception rooms, basement and stairs to first floor landing.

Downstairs W.C 7'1" x 2'7" (2.17m x 0.80m)

Single glazed window to side and rear aspect, coved ceiling, wall mounted wash hand basin, low level W.C, laminate flooring.

Reception Room One 14'9" x 13'3" (4.51m x 4.04m)

Single glazed window to front aspect, coved ceiling, power points, carpeted flooring.

Reception Room Two 11'6" x 11'0" (3.53m x 3.37m)

Single glazed window and French doors to rear aspect, coved ceiling, power points, carpeted flooring.

Reception Room Three 11'8" x 9'9" (3.58m x 2.98m)

Single glazed window to side aspect, coved ceiling, power points, carpeted flooring.

Kitchen 7'1" x 6'4" (2.18m x 1.94m)

Single glazed window to rear aspect, range of base and wall units with roll top work surfaces, stainless steel sink and drainer unit, power points, laminated flooring.

First Floor Landing

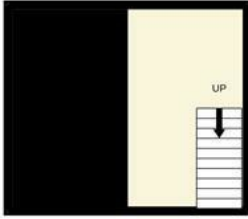
Bedroom One 17'0" x 11'11" (5.20m x 3.64m)

Two single glazed windows to front aspect, power points, carpeted flooring.

Bedroom Two 11'7" x 11'1" (3.55m x 3.39m)

Single glazed window to rear aspect, single radiator, power points, carpeted flooring.

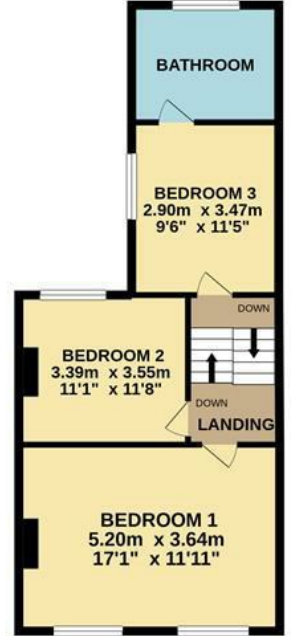
BASEMENT



GROUND FLOOR



1ST FLOOR



Whilst every attempt has been made to ensure the accuracy of the floorplan contained here, measurements of doors, windows, rooms and any other items are approximate and no responsibility is taken for any error, omission or mis-statement. This plan is for illustrative purposes only and should be used as such by any prospective purchaser. The services, systems and appliances shown have not been tested and no guarantee as to their operability or efficiency can be given.
Made with Metropix ©2021

