

## Spire View, Sunderland, SR3 1AE

Spire View is a group of properties in an exclusive development located in Humbledon Hill, Sunderland. Recently completed they feature an ultra modern design with floor to ceiling windows allowing views over Sunderland and reaching as far as the coast. Nestled into the face of the hill, this stunning property has its own private terrace and green wildflower rooftop that blends beautifully into the surrounding area.

The property features heat source pump underfloor heating which means the polished micro cement floors are warm to touch and create a real minimalist feel since no radiators are needed. The aforementioned windows allow light to stream in from all angles and feature internal remote controlled blinds for your convenience.

On the entrance level there is the hall with cloakroom/wc and double doors leading through to the vast open plan living room, dining area and kitchen. You can also access a roof terrace via the full length sliding doors from the lounge.

£2,700 Per Month



- New Build
- Underfloor Heating
- 5 Bedrooms
- Integrated Appliances Included

- Ultra Modern
- Heat Source Pump
- Turfed Gardens

- Polished Micro Cement Floors
- Large Private Garden
- Off Street Parking

#### Entrance Lobby

#### WC

#### Open Plan Lounge & Kitchen

45'3" x 17'4" (13.8 x 5.3)

#### Lower Floor Hallway

#### Master Bedroom

13'1" x 9'10" (4.0 x 3.0)

#### Dressing Room

6'2" x 5'10" (1.9 x 1.8)

#### En Suite

#### Bedroom 2

23'3" x 8'6" (7.1 x 2.6)

#### Bedroom 3

11'5" x 11'5" (3.5 x 3.5)

#### Bedroom 4

14'1" x 10'5" (4.3 x 3.2)

#### Family Bathroom

#### Bedroom 5

14'1" x 10'2" (4.3 x 3.1)

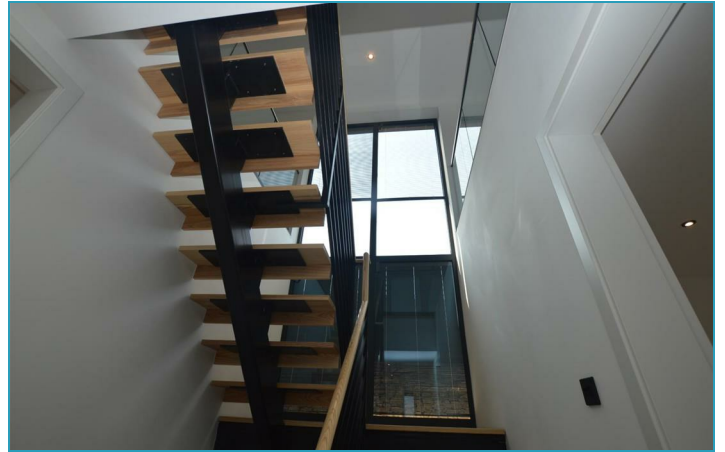
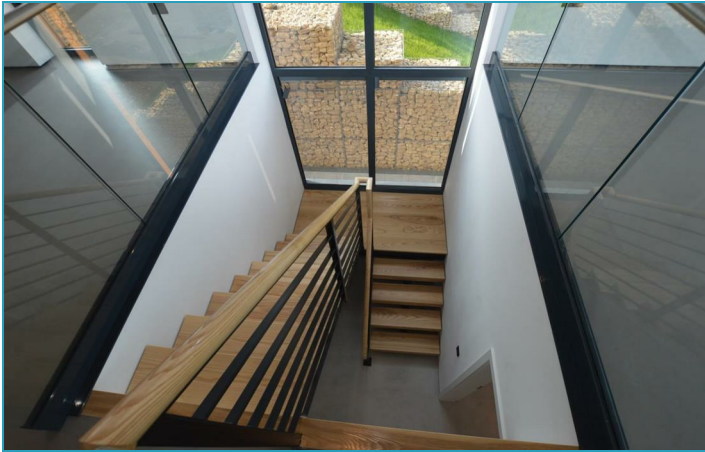
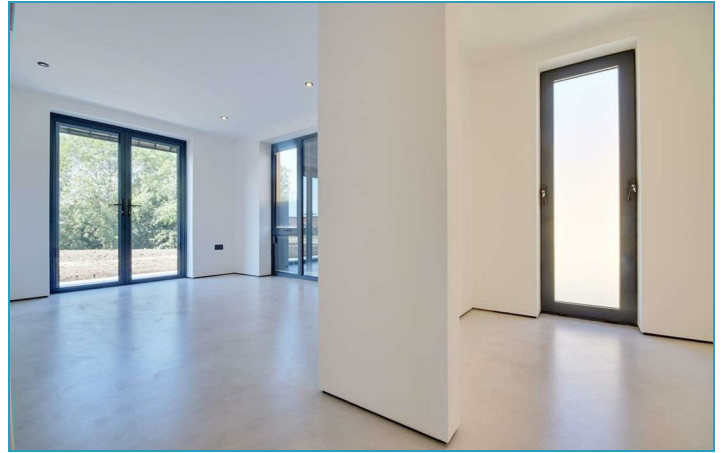
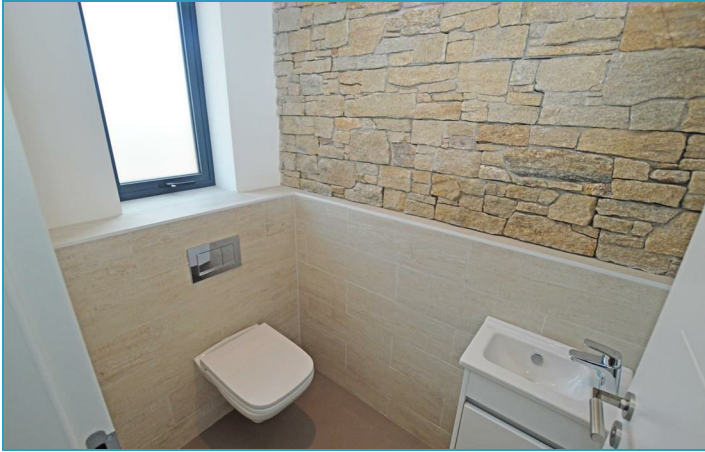
#### Wet Room

8'6" x 8'6" (2.6 x 2.6)



[Directions](#)





## Floor Plan

These particulars, whilst believed to be accurate are set out as a general outline only for guidance and do not constitute any part of an offer or contract. Intending purchasers should not rely on them as statements of representation of fact, but must satisfy themselves by inspection or otherwise as to their accuracy. No person in this firm's employment has the authority to make or give any representation or warranty in respect of the property.

