



SINCLAIR GARDENS W14





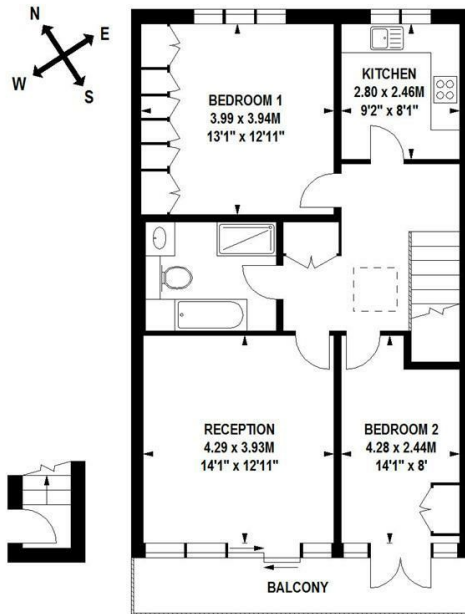
- 2 DOUBLE BEDROOMS • SPACIOUS RECEPTION • LARGE SEPARATE KITCHEN • FAMILY BATHROOM WITH SEPARATE SHOWER • GREAT STORAGE • NEW CARPETS THROUGHOUT • FULL WIDTH ROOF TERRACE • CLOSE TO WESTFIELD LONDON AND SHEPHERDS BUSH TRANSPORT LINKS • AVAILABLE 7TH MAY • FURNISHED / PART FURNISHED

Excellent 2 bedroom flat on the top floor of a Victorian conversion, with spacious reception, large, separate kitchen, family bathroom with separate shower, excellent storage and full width roof terrace accessed from reception and second bedroom. All carpets being replaced and located close to Westfield London, Holland Park and the transport links at Shepherds Bush. Available 7th May, furnished/part furnished.

Sinclair Gardens, W14

Approximate gross internal area

72 sq m / 775 sq ft



Second Floor
Entrance

Third Floor

Floor Plan produced for Finlay Brewer by Mays Floorplans © . Tel 020 3397 4594
Illustration for identification purposes only, not to scale
All measurements are maximum, and include wardrobes and window bays where applicable

138 Shepherds Bush Road, London, W6 7PB
Tel: 020 7371 4071 lettings@finlaybrewer.co.uk