



181D Coldharbour Lane

, SE5 9PA

£1,100 PCM

A bright and airy top floor one bedroom period conversion. Situated in a perfect location for transport into the city. The property benefits from having a modern fitted kitchen/breakfast room, double glazed windows, central heating and much more.

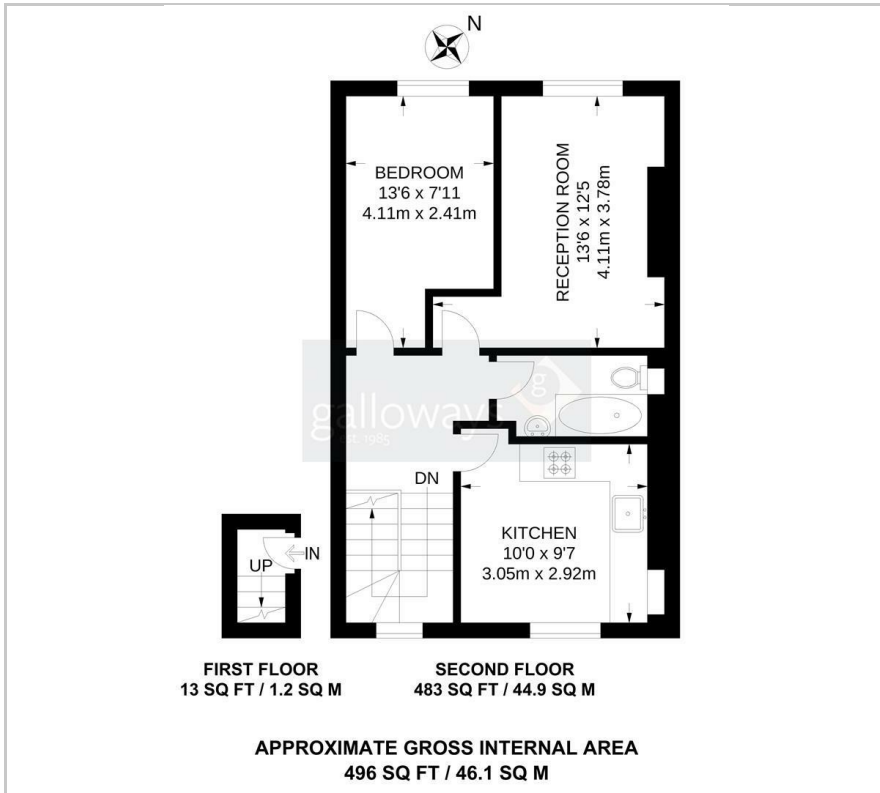
- A TOP FLOOR ONE BEDROOM PERIOD CONVERSION FLAT
- MODERN FITTED KITCHEN/BREAKFAST ROOM
- CENTRAL HEATING
- DOUBLE GLAZED WINDOWS
- THREE PIECE WHITE BATHROOM SUITE
- BRIGHT AND AIRY ACCOMMODATION
- EXCELLENT LOCATION FOR TRANSPORT
- 3 MINUTE WALK TO LOUGHBOROUGH JUNCTION STATION
- (WALKING TIMES ESTIMATED BY GOOGLE MAPS)

Viewing

Please contact our Galloways West Norwood Office on if you wish to arrange a viewing appointment for this property or require further information.



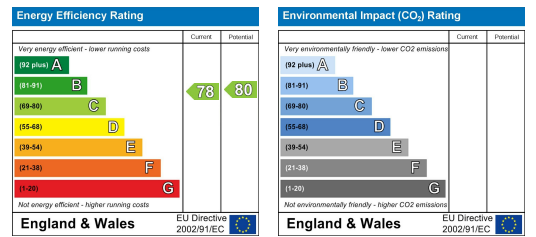
Floor Plan



Area Map



Energy Efficiency Graph



These particulars, whilst believed to be accurate are set out as a general outline only for guidance and do not constitute any part of an offer or contract. Intending purchasers should not rely on them as statements of representation of fact, but must satisfy themselves by inspection or otherwise as to their accuracy. No person in this firm's employment has the authority to make or give any representation or warranty in respect of the property.