

Beaufort Court

Atlantic Wharf | Cardiff | CF10 4AH

Two Bedroom Apartment | Asking Price Of £199,950



mgc.co.uk

2 | 1 | 1 | 1

Sales • Land & New Homes • Rentals • Property Management • Valuation & Surveys • Commercial

PROPERTY DESCRIPTION

****STUNNING WATER VIEWS**** MGY are pleased to present for sale a spacious top floor, two bedroom apartment within the popular Atlantic Wharf development, Beaufort Court. The development is located within walking distance to the City Centre and Cardiff Bay. The immaculate apartment briefly comprises of large hallway, living room with terrace, separate kitchen, two double bedrooms and modern fitted bathroom. The property further benefits from stunning water views, double glazing throughout and one allocated parking space. Ideal first time purchase or investment. Viewing highly recommended.

- **Tenure** Leasehold
- **Council Tax Band** E
- **Floor Area (approx.)**
- **Viewing Arrangements** Strictly by Appointment

ENTRANCE HALL

Entered via wooden door, with letter box. Wood effect laminate flooring. Storage cupboard, housing hot water tank. Additional storage cupboard, with double doors. Wall mounted electric panel heater. Telephone point. Spotlights.

LIVING ROOM

16' 9" x 10' 7" (5.13m x 3.25m)
Double glazed door and windows to front, leading onto paved terrace. Stunning water views. Wood effect laminate flooring. Wall mounted electric panel heater. TV and telephone point.

KITCHEN

13' 7" x 8' 0" (4.15m x 2.44m)
Double glazed sky light, to rear. Large separate kitchen. Wood effect laminate flooring. Wall and base units, with work surfaces incorporating stainless steel sink, with mixer tap. Ample storage throughout. Built in oven, with four ring electric hob and extractor hood over. Splashback.

Space for fridge freezer, washing machine and dishwasher. Breakfast bar, with stool seating below. Extractor fan.

MASTER BEDROOM

11' 4" x 9' 9" (3.47m x 2.99m)
Double glazed sky light, to rear. Carpeted flooring. Wall mounted electric panel heater. TV point.

BEDROOM TWO

14' 11" x 8' 3" (4.56m x 2.52m)
Double glazed window and sky light, to rear. Double bedroom. Carpeted flooring. Wall mounted electric panel heater and storage cupboard. Spotlights.

BATHROOM

8' 2" x 5' 9" (2.50m x 1.76m)
Modern bathroom. Tiled flooring. Fully tiled walls. Vanity enclosed wash hand basin, with mixer tap. Panelled bath, with shower over and glass shower screen. W.C. Wall mounted mirror, with spotlights over. Vanity unit. Heated towel rail. Spotlights.

TERRACE

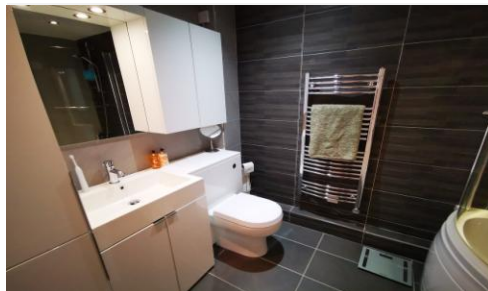
Large paved terrace, with stunning water views and ample sun. Accessed from the living room.

PARKING

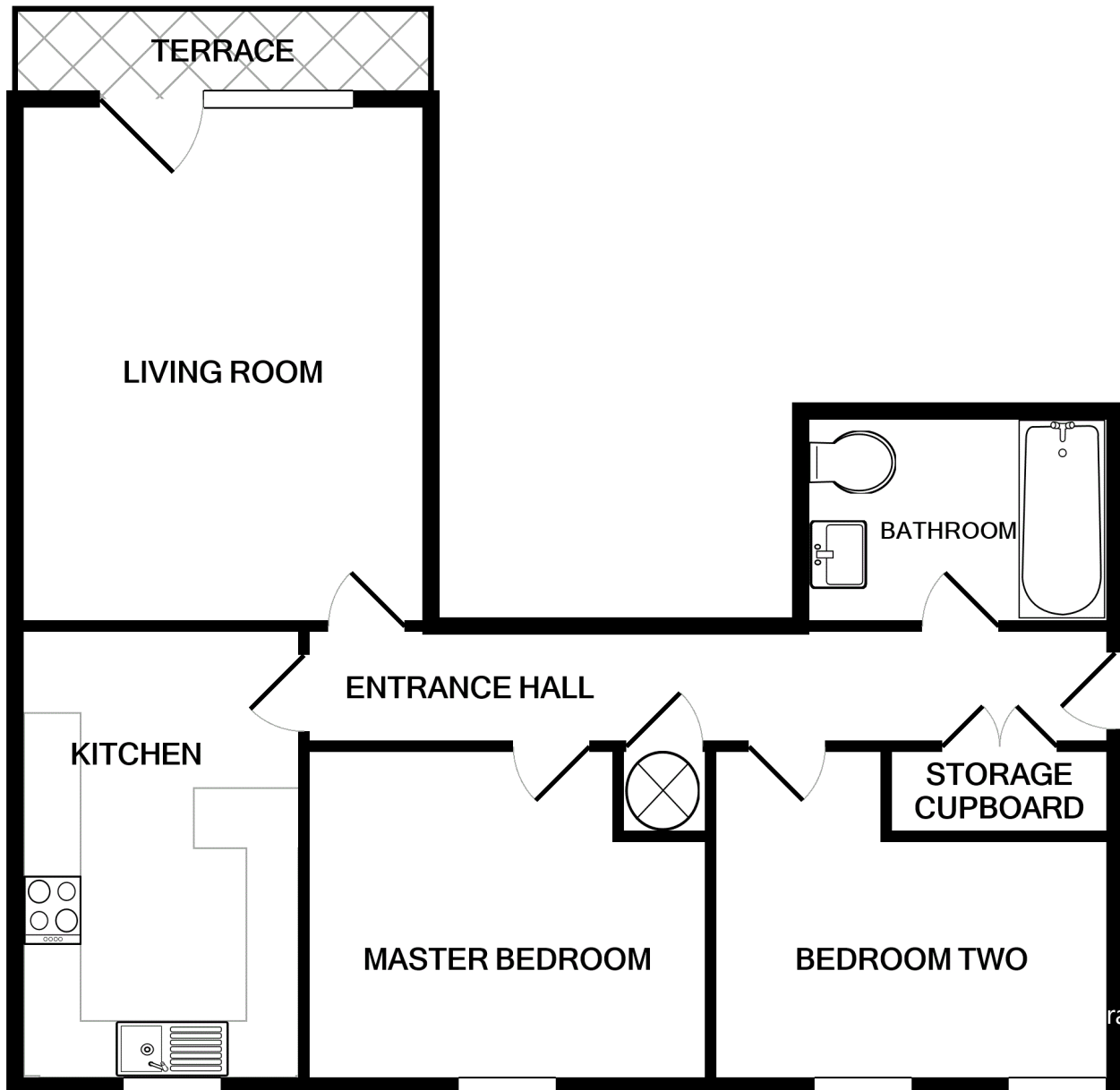
Allocated Parking Space.

TENURE

MGY are advised that the property is leasehold, with a lease of 125 years from 1989. Service charges £1,738 per annum, which includes building insurance. No ground rent.



FLOORPLANS



Whilst every attempt has been made to ensure the accuracy of the floor plan contained here, measurements of doors, windows, rooms and any other items are approximate and no responsibility is taken for any error, omission, or mis-statement. This plan is for illustrative purposes only and should be used as such by any prospective purchaser. The services, systems and appliances shown have not been tested and no guarantee as to their operability or efficiency can be given

Made with Metropix ©2021



Cardiff Bay 029 2046 5466

13 Mount Stuart Square, Cardiff Bay, Cardiff
CF10 5EE

Important Notice: These particulars are prepared for guidance only and do not form whole or any part of any offer or contract. Whilst the particulars are given in good faith, they are not to be relied upon as being a statement or representation of fact. They are made without responsibility on the part of MGY Ltd or Vendor/lessor and the prospective purchaser/lessee should satisfy themselves by inspection or otherwise as to their accuracy. Neither MGY Ltd nor any one in their employ, or the vendor/lessor, imply, make or give any representation/warranty whatsoever in relation to this property.