

241 Deansgate, Manchester, Lancashire, M3 4EL

Tel: 0161 637 8336

Email: [contactus@ascendproperties.com](mailto:contactus@ascendproperties.com)

[www.ascendproperties.com](http://www.ascendproperties.com)

# Ascend

Built on higher standards



City Gate, Blantyre Street, Manchester

£875 PCM

Situated just off the Deansgate Interchange roundabout, this highly sought-after development has a cracking two bedroom apartment up for grabs.

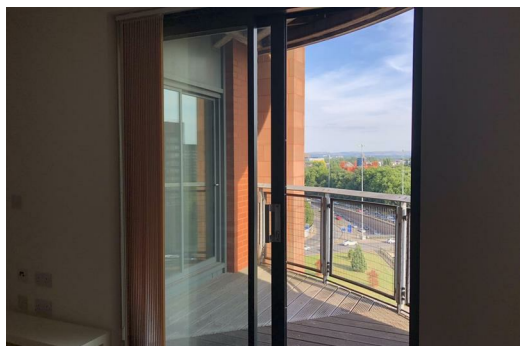
Take a step inside this fully furnished apartment and you're instantly greeted by a huge amount of space and large windows which flood the interior with light. Not only will you benefit from two spacious bedrooms and a modern tiled bathroom, but you'll also have access to a huge terrace – perfect for enjoying the breeze and buzz of the city.

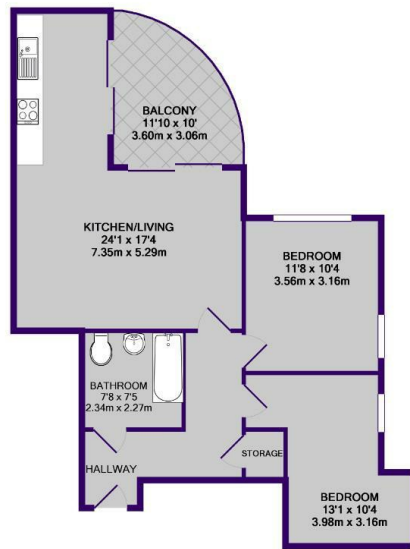
As an added bonus, you'll also have a secure parking space – a rarity with most city centre apartments.

As for location you'll find Deansgate Metrolink and train station just a 5 minute stroll away, with the rest of the city centre just beyond that – so you'll have everything from trendy bars and restaurants to popular entertainment and shopping destinations right at your fingertips.

Fancy a closer look? Make sure to get in touch with our team. We guarantee this one will be snapped up quickly.

Available now





TOTAL APPROX. FLOOR AREA 701 SQ.FT. (65.1 SQ.M.)

Whilst every attempt has been made to ensure the accuracy of the floor plan contained here, measurements of doors, windows, rooms and any other items are approximate and no responsibility is taken for any error, omission, or misstatement. This plan is for illustrative purposes only and should be used as such by any prospective purchaser. The services, systems and appliances shown have not been tested and no guarantee as to their operability or efficiency can be given.

Made with Metropix 02018



Energy Efficiency Rating		Environmental Impact (CO <sub>2</sub> ) Rating	
Current	Potential	Current	Potential
D	B	F	D
72	77	66	66

**Ascend**  
Built on higher standards