



Jubilee House, Jubilee Drive, Liverpool

£475 PCM

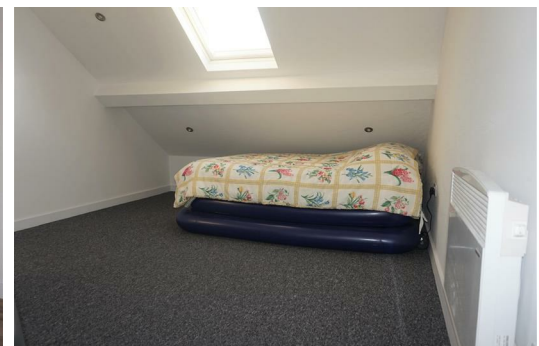
****ADDITIONAL £25.00 TOWARDS WATER AND WIFI COSTS****

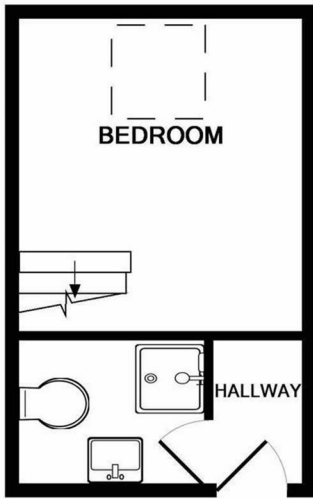
Welcome to Jubilee House – here you'll find this stunning one-bedroom apartment in a prime Liverpool location.

This apartment benefits from a mezzanine level which features a super-stylish bedroom and bathroom. Carpeted throughout, this property offers the perfect haven to relax away from the hustle and bustle of the city. To top it off, you'll also have an modern, high-gloss kitchen - there's not much more you could need from modern city living.

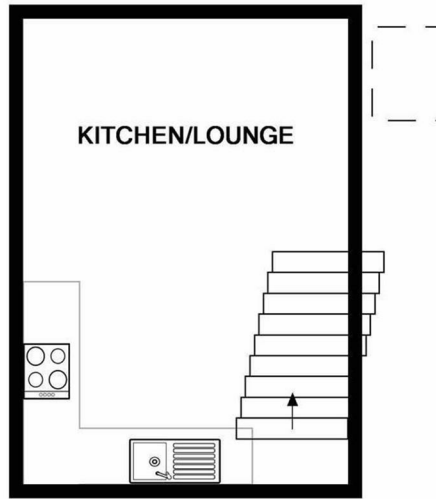
As for location, you'll have everything you could possibly need within easy reach. Wavertree Retail Park, the University of Liverpool and the Royal Hospital are all within a 5 minute drive, so you're perfectly placed for both work and play (you can also take a stroll if you fancy stretching your legs). Liverpool city centre is easily accessible and you have several public transport links close by; the bus stop is less than 1 minute away and Wavertree train station is just 10 minutes away.

Due to its ideal location, we guarantee this one won't be on the market for long. If you'd like to take a closer look, make sure to give our team a call. And just so you know, images are for marketing purposes only so the internal fixtures





GROUND FLOOR



1ST FLOOR

Whilst every attempt has been made to ensure the accuracy of the floor plan contained here, measurements of doors, windows, rooms and any other items are approximate and no responsibility is taken for any error, omission, or mis-statement. This plan is for illustrative purposes only and should be used as such by any prospective purchaser. The services, systems and appliances shown have not been tested and no guarantee as to their operability or efficiency can be given
 Made with Metropix ©2017



Energy Efficiency Rating		Environmental Impact (CO ₂) Rating	
Current	Potential	Current	Potential
84	84	B	B
83	83	C	C
82	82	D	D
81	81	E	E
80	80	F	F
79	79	G	G