



Queen Street, Mosborough, S20

CHAIN FREE!! Call our sales team to arrange your viewing on this spacious two bedroom mid terrace property! Having enclosed rear garden and situated in the highly sought after village of Mosborough! On the doorstep to great local amenities, close to main public transport links and road links to the M1 Motorway and Sheffield City Centre. Ideal for first time buyers or investor!

Asking Price Of £128,000

- CHAIN FREE!
- TWO BEDROOMS
- MID TERRACE
- SPACIOUS THROUGHOUT
- ENCLOSED REAR GARDEN



Property Description

CHAIN FREE!! Call our sales team to arrange your viewing on this spacious two bedroom mid terrace property! Having enclosed rear garden and situated in the highly sought after village of Mosborough! On the doorstep to great local amenities, close to main public transport links and road links to the M1 Motorway and Sheffield City Centre. Ideal for first time buyers or investor!

LOUNGE

11' 5" x 12' 9" (3.50m x 3.90m)

Enter into spacious lounge with laminate flooring, feature wallpapered wall and feature fireplace. Wall lighting, radiator and window. Door too kitchen.



Queen Street, Mosborough, S20



KITCHEN

9' 8" x 12' 1" (2.97m x 3.70m)

Fitted with ample wall and base units, contrasting worktops and tiled splash backs. Sink with drainer and mixer tap and wall mounted boiler. Integrated fridge/freezer, oven, hob and extractor fan. Under counter space for washing machine. Ceiling light, radiator and window. Stair rise to first floor landing and doors to storage cupboard and outside.

STAIRS/LANDING

A carpet stair rise to first floor landing with neutral decor and ceiling light. Doors to two bedrooms and bathroom.



BEDROOM 1

12' 9" x 11' 5" (3.90m x 3.50m)

A good sized double bedroom with laminate flooring and neutral decor. Ceiling light, radiator and window to the front.

BEDROOM 2

12' 1" x 5' 5" (3.70m x 1.67m)

A second bedroom with carpet flooring and neutral decor. Ceiling light, radiator and window.



BATHROOM

6' 10" x 9' 0" (2.10m x 2.75m)

Comprising of bath with over head shower, vanity unit with wash basin and WC. Part tiled walls and tiled flooring.

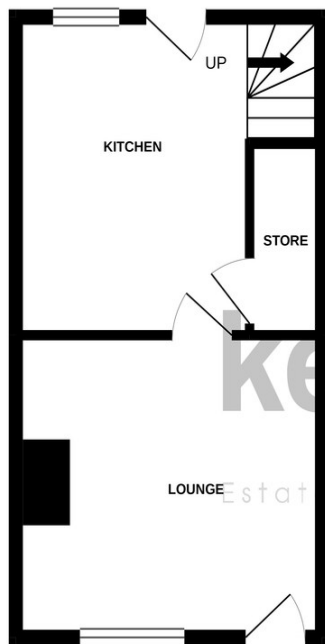
OUTSIDE

To the front of the property is block paved area with wall to the boundaries and gate. To the rear of the property is a patio area with fencing and hedges to the boundary.

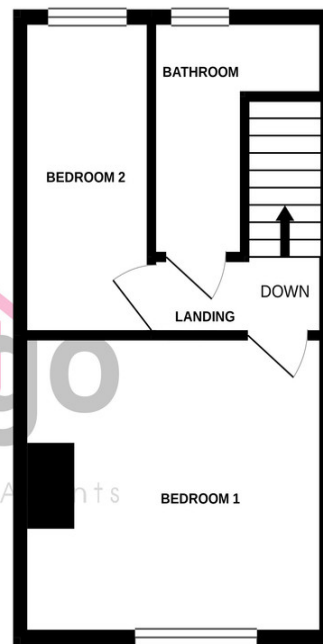


Queen Street, Mosborough, S20

GROUND FLOOR
297 sq.ft. (27.6 sq.m.) approx.



1ST FLOOR
297 sq.ft. (27.6 sq.m.) approx.



key2go
Estate & Letting Agents

TOTAL FLOOR AREA: 594 sq.ft. (55.2 sq.m.) approx.

Whilst every attempt has been made to ensure the accuracy of the floorplans contained herein, measurements of doors, windows, rooms and any other items are approximate and no responsibility is taken for any error, omission or mis-statement. This plan is for illustrative purposes only and should be used as such by any prospective purchaser. The services, systems and appliances shown have not been tested and no guarantee as to their operability or efficiency can be given.
Made with Metroplex ©2020

Tenure

Freehold

Council Tax Band

A

Viewing Arrangements

Strictly by appointment

Contact Details

38a High Street
Mosborough
Sheffield
South Yorkshire
S20 5AE

www.key2go.co.uk
enquiries@key2go.co.uk
0114 2478819

EPC TO BE CONFIRMED

Agents Note: Whilst every care has been taken to prepare these sales particulars, they are for guidance purposes only. All measurements are approximate and for general guidance purposes only and whilst every care has been taken to ensure their accuracy, they should not be relied upon and potential buyers are advised to recheck the measurements

rightmove

Zoopla



PrimeLocation
Find the home you deserve

onTheMarket.com

naea | propertymark
PROTECTED

arla | propertymark
PROTECTED

