

26 Annesley Grove

Arboretum, NG1 4GU

£2,330 Per Month

****AVAILABLE FOR 2021/22 ACADEMIC YEAR****

This 6 double bedroom flat is located in a popular student location, a stones throw away from the Arboretum. The property benefits from being close to many local independent shops, cafes, pubs and a short walk to Trent University.

Modern fully fitted kitchen including appliances and bathroom with shower, located in the Arboretum less than 5 minutes walk away from Nottingham Trent University! Tram and bus access into the city is also on your door step. The property is comprised of 4 flats total - all student accommodation, there is also a large garden communal area for you to meet and greet other fellow student tenants.

All 6 bedrooms double sized, comprising of bed, wardrobe, desk and chair. Neutral décor gas central heating and double glazing.

On street parking available on Nottingham City Council discretion.

51 Week tenancy.

Please call the office to arrange a viewing on 0115 845 0708.

****BILLS INCLUSIVE OPTION AVAILABLE****

Viewing

Please contact our Top365 Lettings Office Office on 0115 845 0708

if you wish to arrange a viewing appointment for this property or require further information

- 3 double bedrooms
- modern fully fitted kitchen
- bathroom with shower
- 5 minutes away from Trent uni
- large communal garden



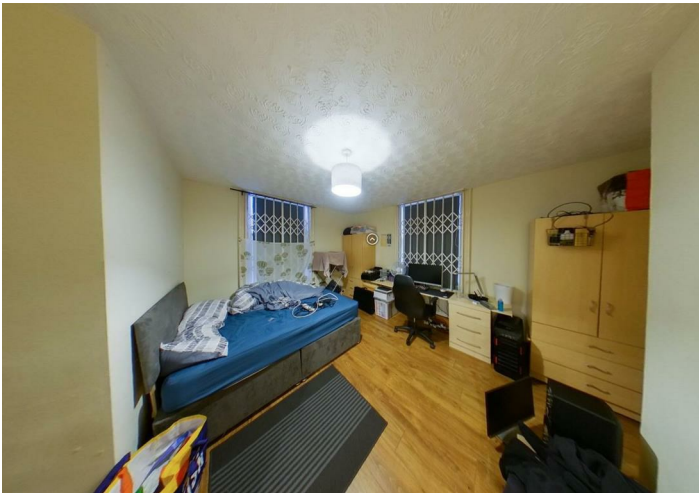
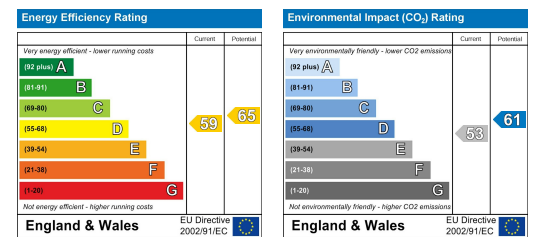
Floor Plan



Area Map



Energy Efficiency Graph



These particulars, whilst believed to be accurate are set out as a general outline only for guidance and do not constitute any part of an offer or contract. Intending purchasers should not rely on them as statements of representation of fact, but must satisfy themselves by inspection or otherwise as to their accuracy. No person in this firm's employment has the authority to make or give any representation or warranty in respect of the property.

76 Derby Road | Nottingham | NG1 5FD

T: 0115 845 0708 M: 07758 520 126 E: enquiries@top365.co.uk W: www.top365.co.uk