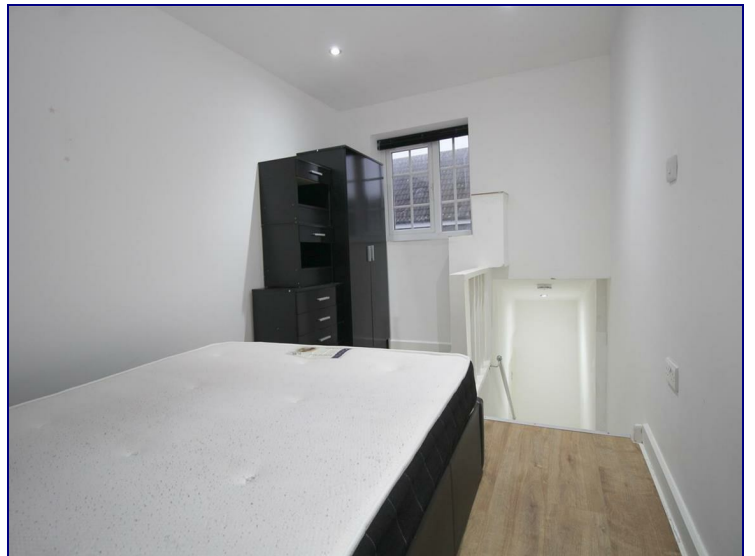




[www.kings-group.net](http://www.kings-group.net)

488 Bethnal Green Road  
London E2 0EA  
Tel: 0207 613 2121

**Fulmer Road, London, E16 3TF**



**£1,250 Per Month**


**\*\*ALL BILLS INCLUDED\*\*** Gorgeous brand newly refurbished two double bedroom flat located on the quite and peaceful residential turning. The flat consists of an exceptionally bright open plan reception with fitted kitchen leading on the large private garden.

This home is located in quiet area in great neighbourhood. Excellent for city workers being located less than 0.5 miles from Prince Regent DLR.

There are plenty of great shopping opportunities in close proximity too, with ASDA, Sainsbury's, Tesco, Galleons Reach and Stratford on your doorstep. There are a number of restaurants at Royal Victoria Docks, and Yi-Ban at Royal Albert Station. The green spaces of Newham City Farm and Beckton District park close by.

The property is offered furnished its available immediately.



Energy Efficiency Rating		
	Current	Potential
Very energy efficient - lower running costs		
(92 plus) <b>A</b>		
(81-91) <b>B</b>		
(69-80) <b>C</b>		
(55-68) <b>D</b>		
(39-54) <b>E</b>		
(21-38) <b>F</b>		
(1-20) <b>G</b>		
Not energy efficient - higher running costs		
<b>England &amp; Wales</b>	EU Directive 2002/91/EC	

Environmental Impact (CO <sub>2</sub> ) Rating		
	Current	Potential
Very environmentally friendly - lower CO <sub>2</sub> emissions		
(92 plus) <b>A</b>		
(81-91) <b>B</b>		
(69-80) <b>C</b>		
(55-68) <b>D</b>		
(39-54) <b>E</b>		
(21-38) <b>F</b>		
(1-20) <b>G</b>		
Not environmentally friendly - higher CO <sub>2</sub> emissions		
<b>England &amp; Wales</b>	EU Directive 2002/91/EC	