



FITZJOHN
SALES & LETTINGS

62 Hargate Way,
Hampton Hargate, Peterborough,
Cambridgeshire, PE7 8DS

Tel 01733 555520
info@fitzjohnstateagents.com
www.fitzjohnstateagents.com



63 Audley House, Audley Gate Netherton Peterborough PE3 9PL

£140,000



Located in the sought after area of Netherton is this well presented and much improved refurbished apartment. The property has a refitted kitchen with integrated appliances, a bathroom with Italian marble tiles and natural Travertine stone tiles to the hallway. Accommodation comprises two bedrooms, open plan lounge and kitchen area, bathroom, communal gardens and single garage. *** AN EARLY VIEWING IS ESSENTIAL *** NO FORWARD CHAIN ***



Entrance Hall

Radiator, natural Travertine stone tiled flooring, power point(s) with recessed ceiling spotlights, intercom, entry phone, storage cupboard, open plan to Open Plan Living / Kitchen, door to:

Bedroom 2 3.94m (12'11") x 2.47m (8'1")

Window to rear, radiator, fitted carpet, TV point, power point(s), coving to ceiling with ceiling spotlights, fitted bedroom suite with a range of wardrobes matching dressing table and bedside cabinet.

Bathroom

Refitted with four piece suite comprising panelled bath with separate shower over and glass screen, vanity wash hand basin, bidet and close coupled WC, tiled surround, window to front, Italian marble tiles, coving to ceiling with recessed ceiling spotlights, extractor fan.

Bedroom 1 4.29m (14'1") x 2.64m (8'8")

Window to side, radiator, fitted carpet, TV point, power point(s), coving to ceiling with ceiling spotlights, fitted bedroom suite with a range of wardrobes matching dressing table and bedside cabinet.

Open Plan Living / Kitchen 5.81m (19'1") x 4.86m (15'11") max

Fitted with a matching range of base and eye level units with granite worktop space over, matching breakfast bar, glazed display unit, stainless steel sink unit with mixer tap with tiled splashbacks, integrated fridge/freezer and dishwasher, plumbing for washing machine, built-in gas double oven, built-in gas hob with extractor hood over, window to rear, window to side, Storage cupboard, two radiators, tiled flooring, TV point, power point(s), wall light(s), coving to ceiling with recessed ceiling spotlights, utility cupboard with power and with underlighting.

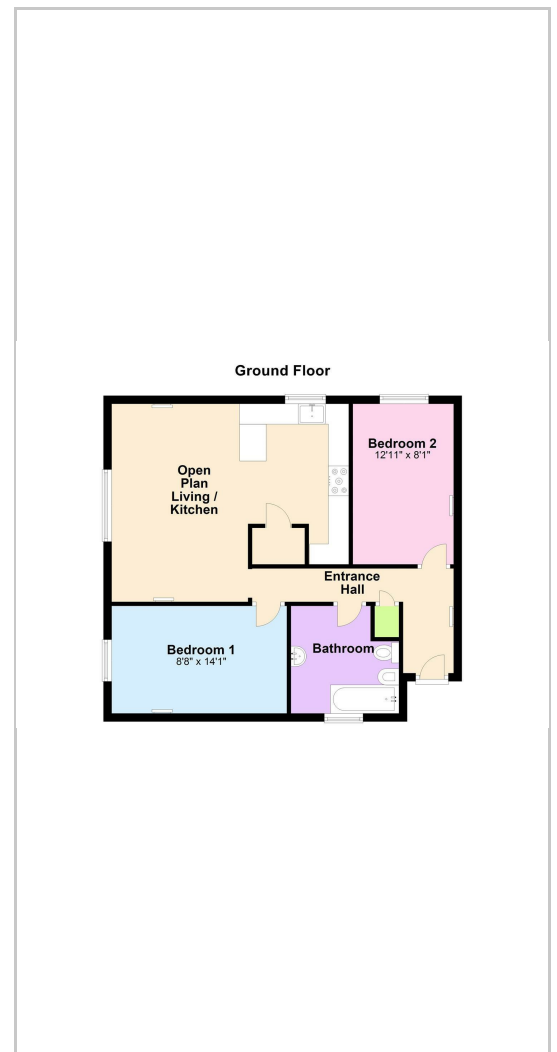
OUTSIDE

Communal gardens and single garage at rear.

Area Map



Floor Plans



Energy Efficiency Graph

