



## 14 Pellipar Close , London, N13 4AG

\*\*\*\*\*New Instruction\*\*\*\*\*Easy Properties London Ltd very pleased to offer this 2 bedroom flat in Palmers Green.

Flat located on a quite street on Pellipar Close in Palmers Green, Ground Floor with 1 double and 1 medium size bedroom, quite specious living room, separate fully equipped kitchen. walking distance to all shops and local amenities. Gas Central heating and laminate flooring through, double glaze windows.

Flat available and ready to move in, for more info and viewing please call our letting team.

**£1,425 Per Month**

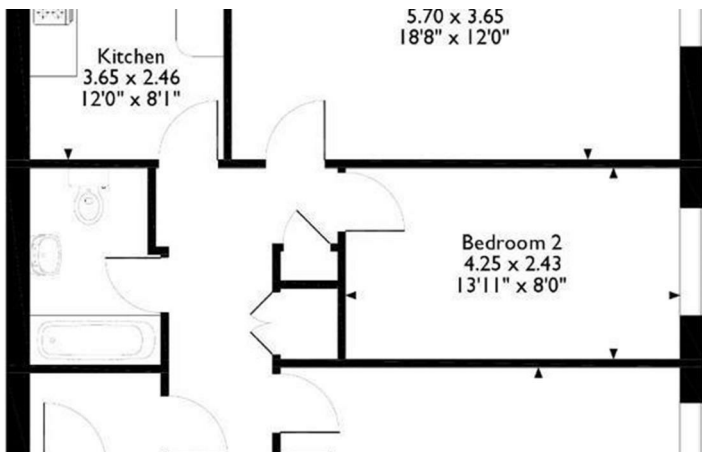
# 14 Pellipar Close

, London, N13 4AG



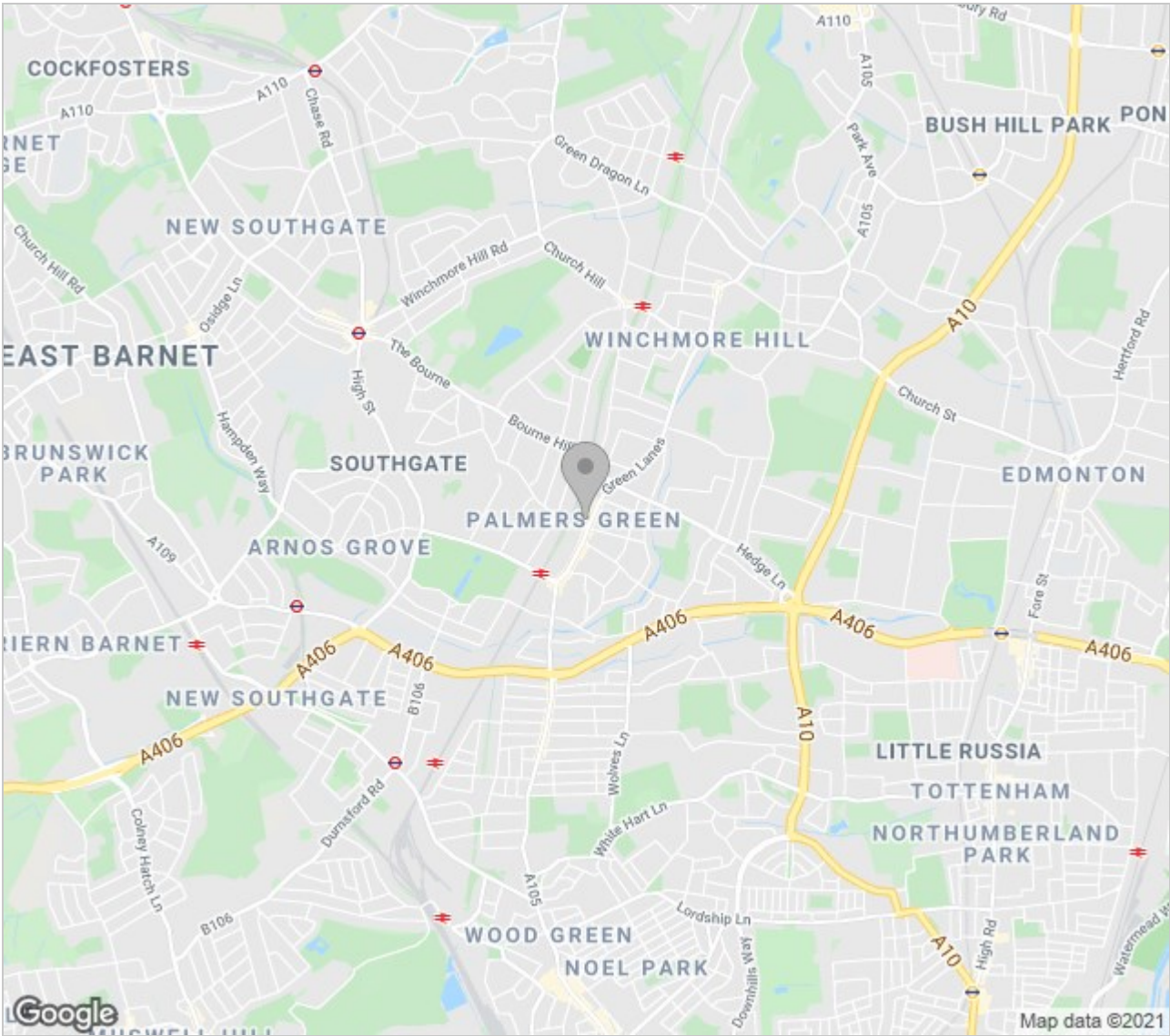
- Palmers Green
- Part Furnished
- Laminate Flooring
- Fully Equipped Kitchen
- Double Glaze

Directions





Area Map



Energy Efficiency Rating		
	Current	Potential
Very energy efficient - lower running costs		
(92 plus) A		
(81-91) B		
(69-80) C		
(55-68) D		
(39-54) E		
(21-38) F		
(1-20) G		
Not energy efficient - higher running costs		
England & Wales	EU Directive 2002/91/EC	

Environmental Impact (CO <sub>2</sub> ) Rating		
	Current	Potential
Very environmentally friendly - lower CO <sub>2</sub> emissions		
(92 plus) A		
(81-91) B		
(69-80) C		
(55-68) D		
(39-54) E		
(21-38) F		
(1-20) G		
Not environmentally friendly - higher CO <sub>2</sub> emissions		
England & Wales	EU Directive 2002/91/EC	

These particulars, whilst believed to be accurate are set out as a general outline only for guidance and do not constitute any part of an offer or contract. Intending purchasers should not rely on them as statements of representation of fact, but must satisfy themselves by inspection or otherwise as to their accuracy. No person in this firms employment has the authority to make or give any representation or warranty in respect of the property.

