

**Southfield Gardens
Twickenham
TW1 4SZ**

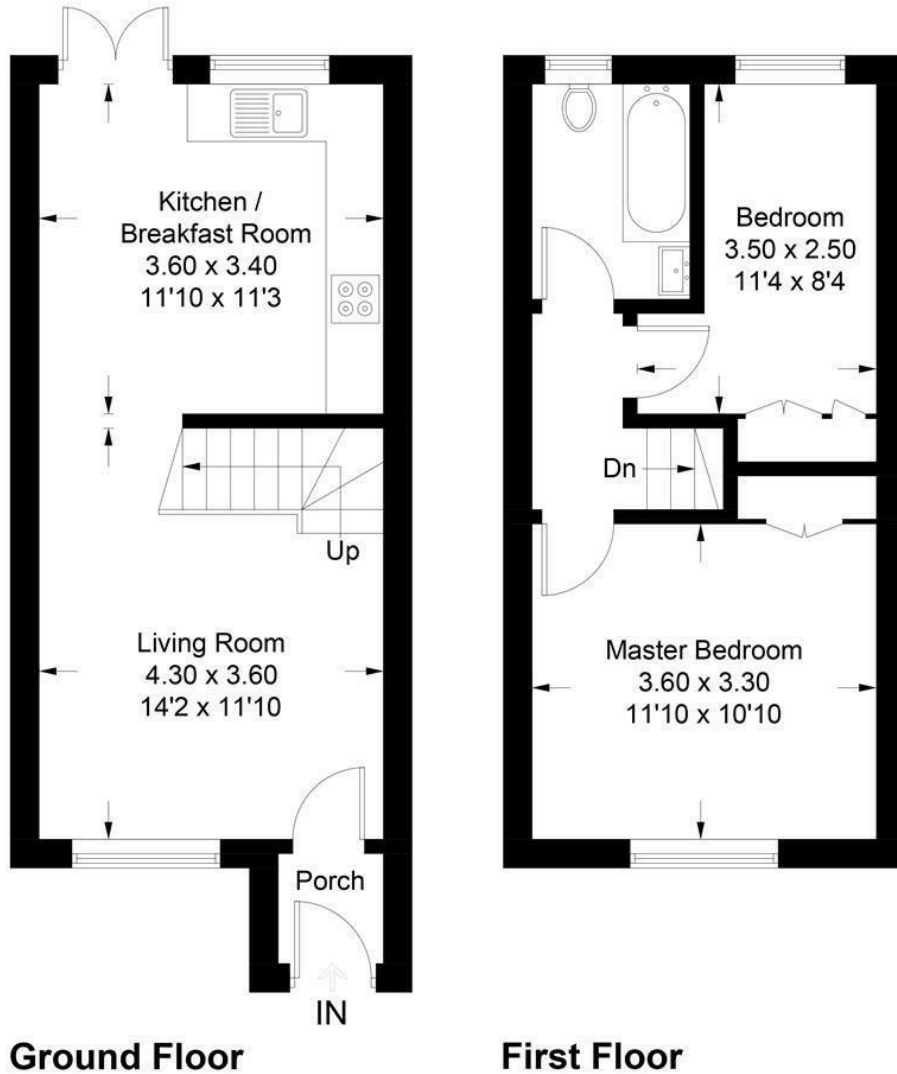
£475,000

ChaseBuchanan



Southfield Gardens, TW1

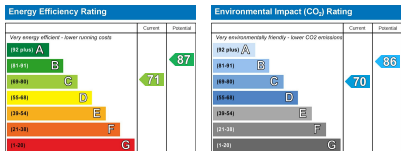
Approximate Gross Internal Area = 58.4 sq m / 628 sq ft



Ground Floor

First Floor

Illustration for identification purposes only, measurements are approximate, not to scale. floorplansUsketch.com © (1D736156)



- Viewings accompanied by Chase Buchanan
- Two bedrooms
- Smartly presented
- Two allocated parking spaces
- Private west facing garden
- Quiet cul-de-sac location
- Freehold modern house
- Close to amenities

SALE AGREED BY CHASE BUCHANAN...This modern freehold house is presented in excellent condition throughout and located in a secluded cul-de-sac in Strawberry Hill.

The accommodation is light and airy throughout and comprises, a good size living room, kitchen/dining room with doors on to the private west facing garden, great size master bedroom, versatile second bedroom and a modern family bathroom. Further benefits include two allocated, private parking spaces.

Situated approximately 0.3 miles from Strawberry Hill station and within easy reach of some of the areas finest schools, Southfield Gardens is a great location for first time buyers and families alike.

For a viewing, call the vendors' sole agent Chase Buchanan.

For more information or to book a viewing, please contact:

020 8744 0101

ChaseBuchanan

4 York Street, Twickenham, TW1 3LD