

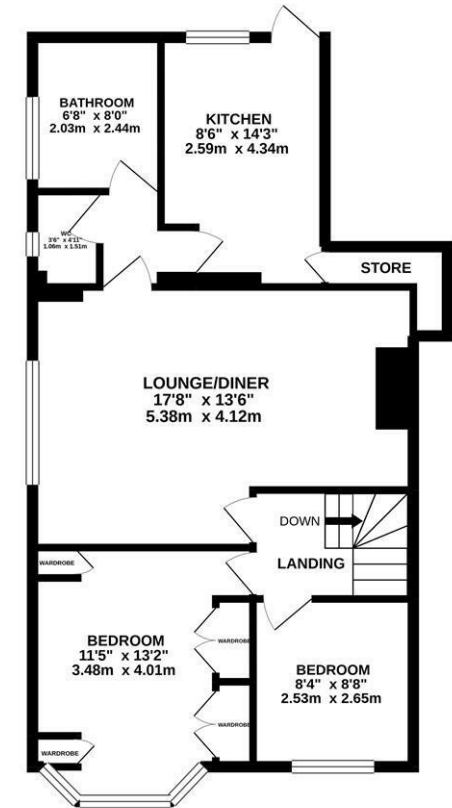


****AVAILABLE IMMEDIATELY****
****FURNISHED** **NEWLY REDECORATED THROUGHOUT**** A large and well presented two bedroom end of terrace upper Tyneside style flat, ideally located on Whitefield Terrace, Heaton. With a spacious reception, a convenience store on your doorstep as well as excellent transport links to the coast and Newcastle city centre this property will make the ideal home for professional or post-graduate sharers alike!

Newly redecorated throughout, The internal accommodation briefly comprises; an entrance hall with stairs to the first floor. There are two double bedrooms, the master of which has a bay window and fitted wardrobes. There is also an impressive 17ft lounge/ diner with laminate wood flooring, family bathroom & separate WC and a spacious kitchen with appliances and separate store cupboard. From the kitchen there is a door leading to a shared rear yard on the ground floor. Externally there is on street parking to the front.

Available Immediately | £575pcm |
 Furnished | End Terrace Upper Tyneside Flat | Two Double Bedrooms | 738 Sq Ft (68.5 m²) | Spacious Fitted Kitchen | 17ft Lounge/Diner | Family Bathroom | Separate WC | On Street Parking | Professional/ Post-Graduate Sharers | Shared Rear Yard | Close To Shops & Public Transport Links | Newly Redecorated | GCH & DG | EPC Rating: D

£575 PCM



TOTAL FLOOR AREA: 738 sq.ft. (68.5 sq.m.) approx.
 Whilst every attempt has been made to ensure the accuracy of the floorplan contained here, measurements of doors, windows, rooms and any other items are approximate and no responsibility is taken for any error, omission or mis-statement. This plan is for illustrative purposes only and should be used as such by any prospective purchaser. The services, systems and appliances shown have not been tested and no guarantee as to their operability or efficiency can be given.
 Made with Metreplan ©2012.



Misrepresentation Act 1967. These particulars and the descriptions and measurements herein do not constitute representation and whilst every effort has been made to ensure accuracy, this cannot be guaranteed.