



TK International
020 7794 8700
www.t-k.co.uk

Residential Sales
Residential Lettings
Property Management

Sales Office:
9 Heath Street
Hampstead
London NW3 6TP
E: sales@t-k.co.uk

Lettings Office:
16-18 Heath Street
Hampstead
London NW3 6TE
E: lettings@t-k.co.uk

Instagram: tk.international
Twitter: @tk_int
LinkedIn: TK International
Facebook: TK International

Est.
1998



Kidderpore Avenue Hampstead NW3

Prominently situated within the centre of the Hampstead Manor development, with views towards Teil Green, an exceptional 850 sq ft (79 sq m) one bedroom apartment within this beautifully restored 19th century building, originally built as a wing to Kidderpore Hall.

This stunning apartment is both beautifully presented and exceptionally spacious, comprising a separate kitchen, reception room, and dining room. There are also two private terraces, which are accessible from the kitchen, reception room and bedroom.

The kitchen comprises Siemens integrated appliances, and the apartment further enjoys high quality conventional radiators throughout.

Hampstead Manor is a very highly regarded and luxurious development situated on Kidderpore Avenue. Residents benefit from exclusive access to a five star hotel lifestyle with 24 hour concierge, gym, swimming pool with jacuzzi and sauna, landscaped gardens and private town car service.

£1,050,000

Leasehold



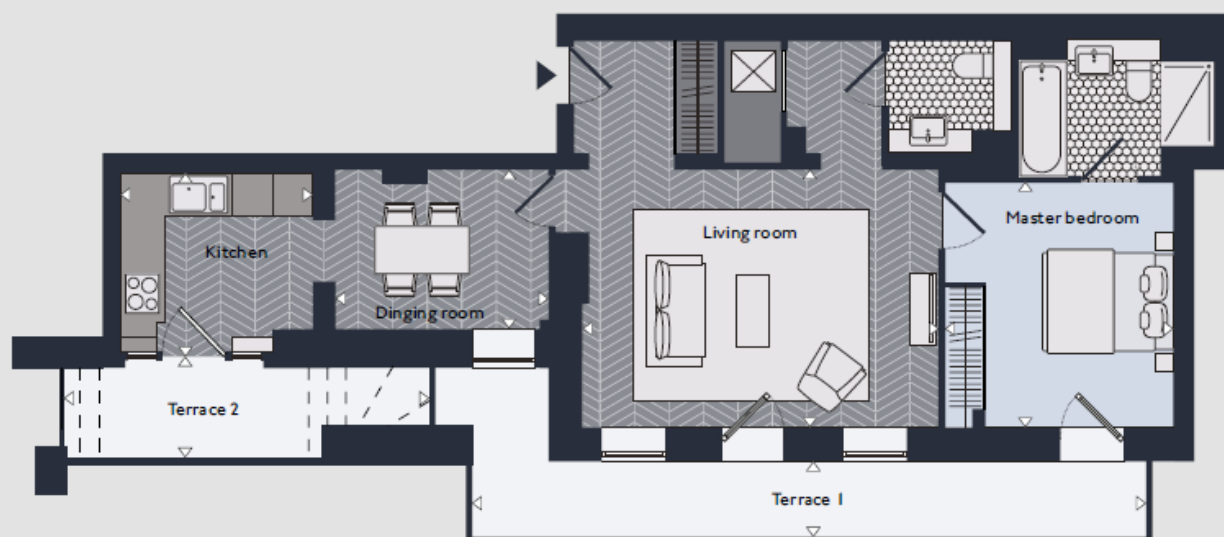
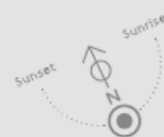






Maynard G.03

1 bedroom | 2 bathroom | 850 sq ft | £1,050,000



	Sq ft	Sq m
Total area	850	79.0
External area	83	7.7
Internal area	767	71.3

	ft	mm
Living room	17' 4" x 12' 7"	5,278 x 3,836
Dining room	10' 4" x 7' 9"	3,160 x 2,360
Kitchen	9' 4" x 7' 12"	2,850 x 2,430
Master bedroom	11' 11" x 11' 1"	3,630 x 3,380
Terrace 1	31' " x 2' 8"	9,460 x 819
Terrace 2	17' 8" x 3' 10"	5,390 x 1,160



Location

Floor

Ground floor

Dashed line shows variation of ceiling heights, please contact your sales agent for details