



10 Rochester Row, London
SW1P

GARTONJONES.COM



10 Rochester Row, London
, SW1P

GARTON JONES.COM

49 Marsham Street Lettings:
London +44 (0) 20 7340 0480
SW1P 3DP westminster@gartonjones.com
www.gartonjones.com

£750 Per Week

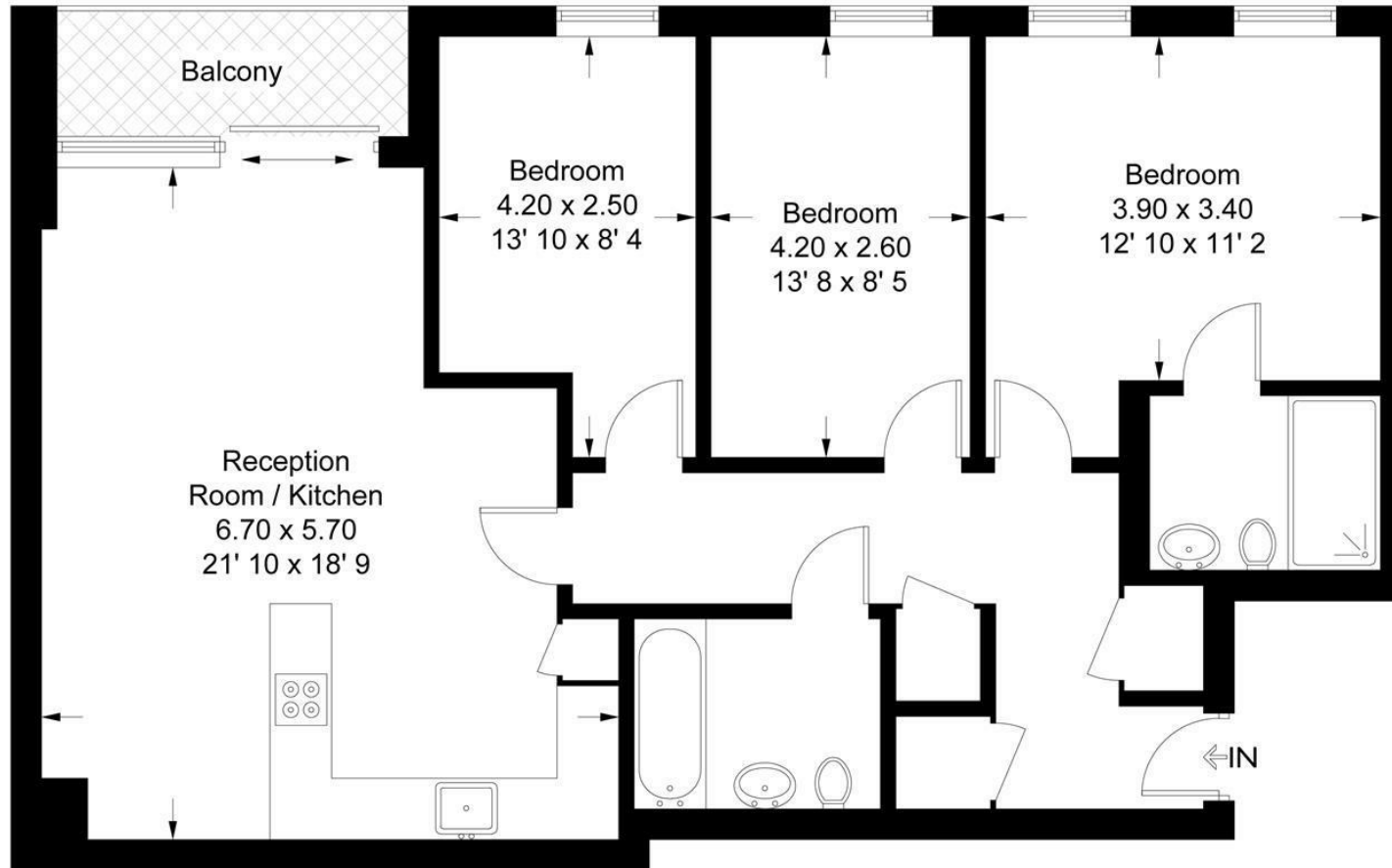
A 3 double bedroom apartment to rent of approximately 1000 Square Feet (92.SQ.M) in this small residential building in Westminster. This furnished apartment further benefits from a dual aspect open plan reception room with floor to ceiling windows, with access to a private balcony, modern integrated kitchen has a breakfast bar and Kuppertsbusch integrated appliances, there are 2 bathrooms (1 en-suite), wood flooring throughout and ample storage. Residents of Ten Rochester Row have the use of an on-site gym, day time porter and secure underground parking. Rochester Row is conveniently located for easy access to the transport services of St James's Park, Westminster, Victoria and Pimlico which are all within walking distance. There is an abundance of amenities on the doorstep including a Sainsburys (which is on-site), The Ivy Victoria, Timmy Green, Aster and Flight Club to name but a few. The Garton Jones Westminster office manages this apartment and is located a few roads away so we are readily available for viewings.

- 1000 sq.ft (92.sq.m)
- 3 Bedroom Apartment
- Open Plan Reception Room
- Integrated Kitchen with Breakfast Bar
- 2 Bathrooms (1 En-Suite)
- Balcony
- Day Porter & Residents Gym
- Secure Underground Parking
- Moments from the Rail/Tube Links of St James's Park, Victoria & Westminster
- Close to Excellent Local Amenities



Rochester Row

Approximate Gross Internal Area = 1000 sq ft / 92.9 sq m



Second Floor

Not to scale, for guidance only and must not be relied upon as a statement of fact
All measurements and areas are approximate only and have been prepared in
accordance with the current edition of the RICS Code of Measuring Practice

