



**SEALPROPERTIES**  
RENTAL MARKET SPECIALISTS

**102 Westbourne Avenue  
Gateshead  
NE8 4NP**



**2 Bedroom Downstairs Flat.**

Beds : 2

Bath : 1

Gas CH : Yes



0191 580 5900



[WWW.SEALPROPERTIES.CO.UK](http://WWW.SEALPROPERTIES.CO.UK)



[INFO@SEALPROPERTIES.CO.UK](mailto:INFO@SEALPROPERTIES.CO.UK)

## Contact Us

### Agent Information

**Sam Topping**

**01915805900**

**sam@sealproperties.co.uk**

**167/169 Saltwell Road**

**Gateshead, NE8 4TJ**

**www.sealproperties.co.uk**

Noimage

### Scan Me

Scan Me For Property Details



### Quote Me

Quote This Reference Number For More Information

**SP20070568**

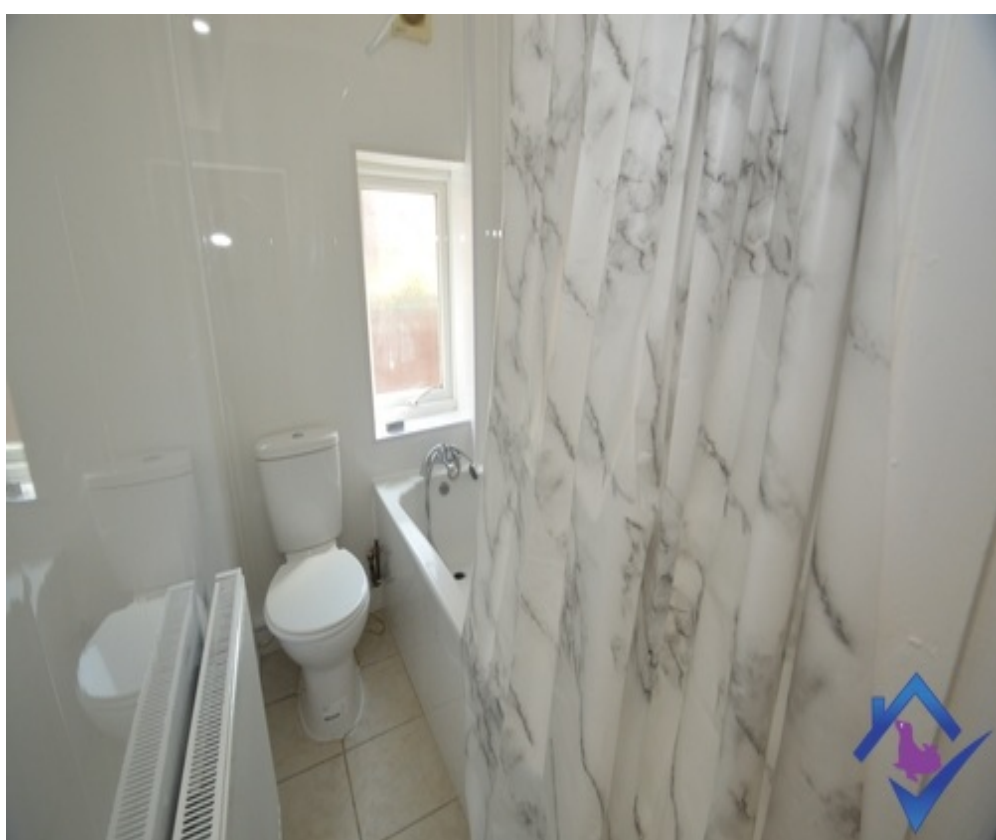
## Disclaimer

Whilst every effort is made to ensure the contents of this brochure are accurate and true, the particulars are set out as a general outline for guidance purposes only and do not constitute any part of an offer or contract. Interested Parties should not rely on them as statements of representation of fact, but instead must satisfy themselves by inspection or otherwise as to their accuracy.

A Holding Fee equivalent to one week's rent is payable. Please contact the office for more details.

Energy Performance Certificate (EPC) information is available upon request. Please contact the office.

# Gallery



## Description

**SEAL Properties welcome to the rental market this two bedroom flat situated on Westbourne Avenue. The property has a large living room, modern kitchen, bathroom and two bedrooms. It is situated near to Saltwell Park, Schools, various shops and business on Coatsworth Road**

## Specification

### GROUND FLOOR

#### Entrance Hallway

*Clean and tidy hallway entrance. Neutrally decorated.*

#### Living Room

*The living room is spacious with an area for dining and relaxing. It has carpets and is nicely decorated.*

#### Kitchen

*The galley style kitchen has a range of high gloss wall and base units with wood effect worktops. It includes an Integrated oven and gas hob.*

#### Bedroom One

*The master bedroom is a large double bedroom.*

#### Bedroom Two

*Single bedroom at the front of the property. Decorated and carpets.*

#### Family Bathroom

*Bath with overhead shower, Low flush W.C and tiled flooring.*

### OUTSIDE

#### Rear

*To the rear of the property there is a small private yard.*