



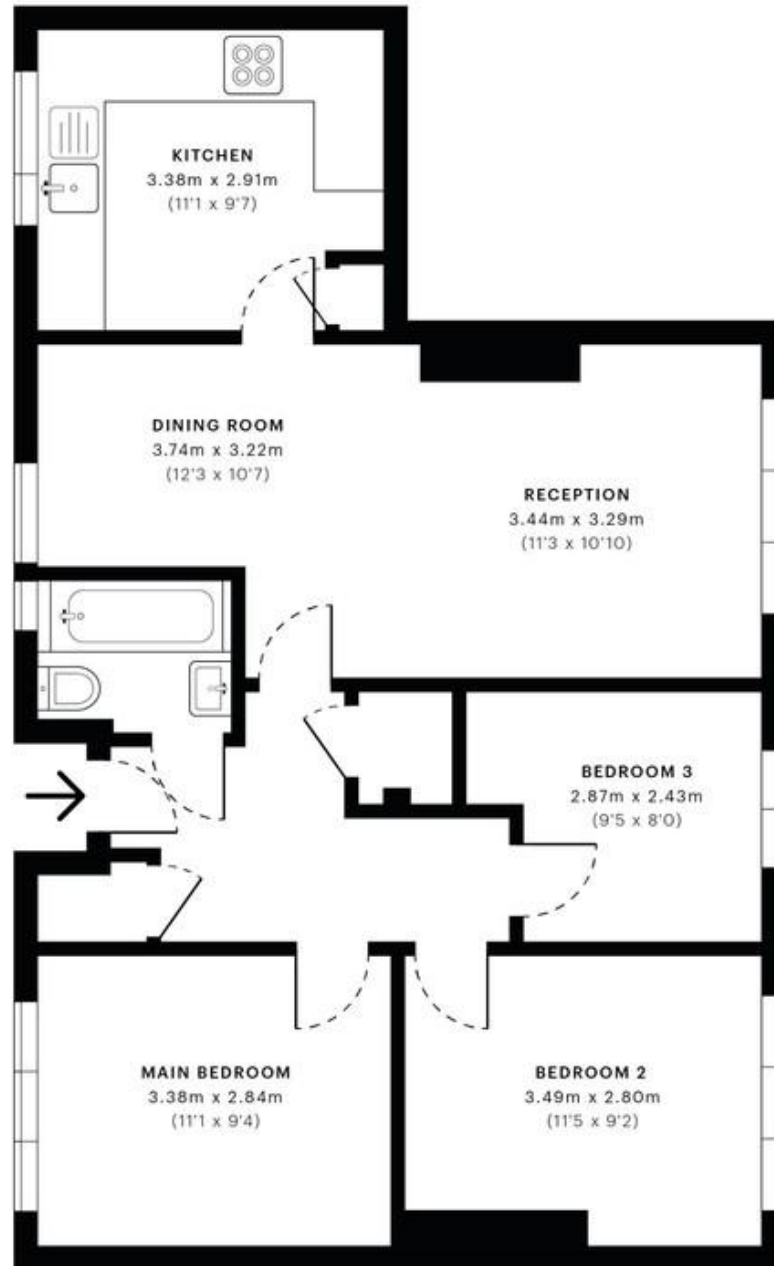
Alfred Nunn House, Chadwick Road, London

£340,000 Leasehold

*** SOLE AGENTS ***

mile... are pleased to offer for sale this large three bedroom apartment in NW10 walking distance from open green spaces of Roundwood Park. Set on the ground floor within this purpose built block, this generously proportioned apartment offers over 700 sq ft of living space and three bedrooms. Being sold with a long lease and chain free, this property benefits from its own entrance, private courtyard, hard flooring, walking distance to Roundwood Park, and an abundance of light and storage. Chadwick Road is ideally positioned close to all the local amenities of Harlesden is within easy reach of a wide selection of shops, bars and restaurants of Willesden Junction. Maple Walk school and Roundwood Park open space are only a few minutes walk from the property. The nearest station is Willesden Junction (Bakerloo line/Overground).

- Ground floor apartment
- Three bedrooms
- Good condition
- Over 757 of living space
- Own entrance
- Walking distance to open green space of Roundwood Park
- Quiet residential road
- Large XXft reception room
- Private court yard to the front
- Close to shops and transport



— Ground Floor



GROSS INTERNAL AREA (GIA)
The footprint of the property
70.37 sqm / 757.46 sqft



NET INTERNAL AREA (NIA)
Excludes walls and external features
Includes washrooms, restricted head height
65.12 sqm / 700.95 sqft



EXTERNAL STRUCTURAL FEATURES
Balconies, terraces, verandas etc.
0.00 sqm / 0.00 sqft



RESTRICTED HEAD HEIGHT
Limited use area under 1.5 m
0.00 sqm / 0.00 sqft