

Flat 6 Fairlawn, 66 High Lane, Chorlton, M21 9DZ



JP & Brimelow
SALES

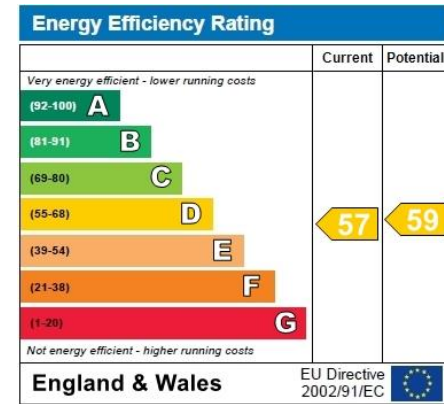
Price: £275,000

****VIDEO TOUR AVAILABLE**** A spacious & contemporary, TWO DOUBLE BEDROOMED, luxury, top floor apartment with an enclosed private decked terrace to the rear of this attractive development. 'Fairlawn' is an attractive period conversion within walking distance to the bars, restaurants, café society and the boutique shops on Beech Road. Close to Chorlton Nature Reserve and the Meadows, all local amenities are a short walk, with the Metrolink station on Wilbraham Road giving direct access into the City Centre/Media City and Manchester International Airport. The spacious and well-planned accommodation comprises; communal entrance hallway, a private entrance hallway, an impressive open plan lounge/dining/fully fitted kitchen with integrated appliances, two good sized double bedrooms and a white three-piece bathroom suite. The apartment benefits from electric heating, solid oak wooden flooring, double-glazed windows, an enclosed private decked patio terrace from bedroom two. There is an allocated off-road parking space and attractive landscaped communal gardens with a further lawned garden to the rear aspect. OFFERED WITH NO VENDOR CHAIN. Would be ideal for a young professional or a couple and early viewing is highly recommended to appreciate this fantastic apartment.



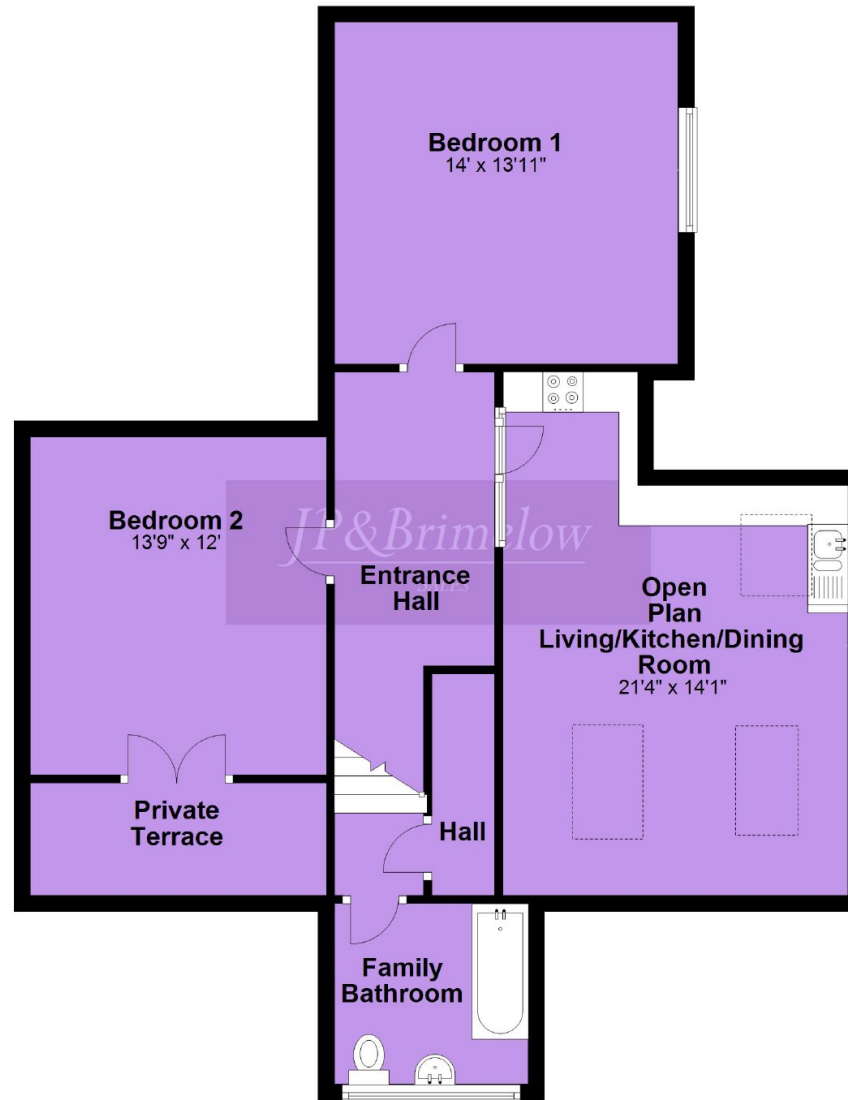


EPC Chart



Freehold FREEHOLD. All six apartments have a share of the leasehold. The monthly service charge of £91.54 and ground rent of £0.00. (Information as per current vendor) March 2021. Council Tax Band: B

Top Floor



Chorlton & Didsbury Sales

430 Barlow Moor Road, Chorlton, Manchester, M21 8AD

Chorlton: 0161 882 2233 Didsbury: 0161 448 0622

E: chorlton@jpbrimelow.co.uk www.jpandbrimelow.co.uk



JP & Brimelow

SALES

NOTICE: J P & Brimelow Chorlton & Didsbury Ltd for themselves and for the vendors or lessors of this property whose agents they are give notice that:

- (i) the particulars are set out as a general outline only for the guidance of intending purchasers or lessees, and do not constitute, nor constitute part of, an offer or contract;
- (ii) all descriptions, dimensions, references to the condition and necessary permissions for use and occupation, and other details are given in good faith and are believed to be correct but any intending purchasers or tenants should not rely on them as statements or representations of fact but must satisfy themselves by inspection or otherwise as to the correctness of each of them;
- (iii) no person in the employment of JP & Brimelow Ltd has any authority to make or give any representation or warranty whatever in relation to this property.



Follow us on Twitter @jpandbrimelows