



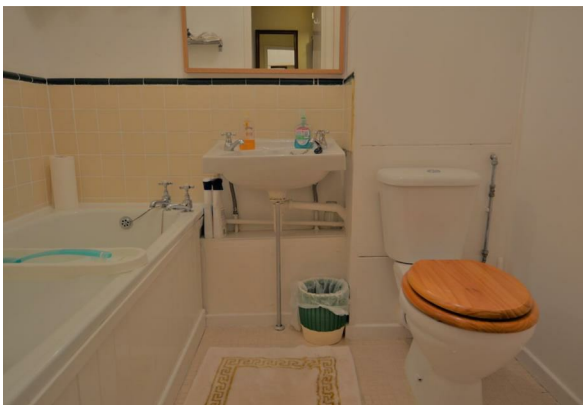
QUILLIAM

Nero Court
Brentford

- Popular Marina Development
- Pleasant Views
- Fitted Kitchen
- Convenience Store
- Private Parking Space
- River Thames Location
- One Double Bedroom
- 24hr Security
- Well Maintained Gardens
- Share of Freehold

Asking Price £310,000





Property Description

A lovely one bedroom apartment on the first floor of this popular marina development with beautiful views. Situated in this popular marina development and only a stone's throw from the River Thames, it benefits from 24hr security, well maintained communal gardens and a private parking space. An idea investment for a first time buyer.



RECEPTION

15'9 x 10'8

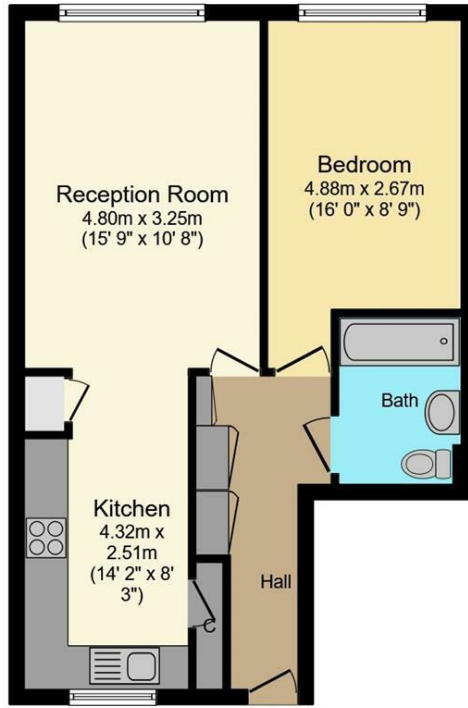
KITCHEN

14'2 x 8'3

BEDROOM

16 x 8'9





Floor area 49.0 sq. m. (527 sq. ft.) approx

Total floor area 49.0 sq. m. (527 sq. ft.) approx

This Floor Plan is for illustration purposes only and may not be representative of the property. The position and size of doors, windows and other features are approximate. Unauthorized reproduction prohibited. © PropertyBOX



Energy Efficiency Rating		Current	Potential
Very energy efficient - lower running costs			
(92 plus) A			
(81-91) B			
(69-80) C			
(55-68) D			
(39-54) E			
(21-38) F			
(1-20) G			
Not energy efficient - higher running costs			
England & Wales		75	81
	EU Directive 2002/91/EC		

Environmental Impact (CO ₂) Rating		Current	Potential
Very environmentally friendly - lower CO ₂ emissions			
(92 plus) A			
(81-91) B			
(69-80) C			
(55-68) D			
(39-54) E			
(21-38) F			
(1-20) G			
Not environmentally friendly - higher CO ₂ emissions			
England & Wales			
	EU Directive 2002/91/EC		

QUILLIAM

206 High Street
Brentford
Middlesex
TW8 8AH

020 8847 4737
info@quilliam.co.uk
www.quilliam.co.uk

Agents Note: Whilst every care has been taken to prepare these particulars, they are for guidance purposes only. All measurements are approximate and are for general guidance purposes only and whilst every care has been taken to ensure their accuracy, they should not be relied upon and potential buyers/tenants are advised to recheck the measurements