



---

Offers In Excess Of £920,000

33b Station Road

New Barnet

Barnet

EN5 1PH

---

EPC Rating '65'

---

Council Tax Band

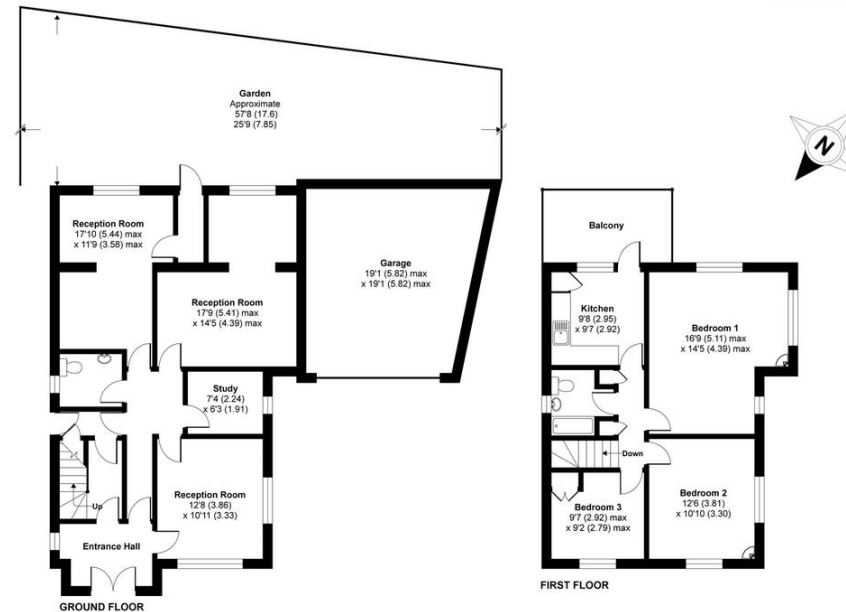
---

- Detached Residence
  - Opportunity For A Developer/ End User
  - Huge Scope To Extend (STPP)
  - Driveway
  - Garage
  - Current EPC rating D
  - 1881 sq ft/ 174.7 sqm
  - Chain free
- 

Station Road, New Barnet, Barnet, EN5

Approximate Area = 1881 sq ft / 174.7 sq m (includes garage)

For identification only - Not to scale



Floor plan produced in accordance with RICS Property Measurement Standards incorporating International Property Measurement Standards (IPMS2 Residential). © ricscom 2021. Produced for Spencer & Sener. REF: 697929

Agents Note: Whilst every care has been taken to prepare these particulars, they are for guidance purposes only. All measurements are approximate and for general guidance purposes only and whilst every care has been taken to ensure their accuracy, they should not be relied upon and potential buyers/tenants are advised to recheck the measurements