



Moore House, 2 Gatliff Road
London SW1W

GARTONJONES.COM



Moore House, 2 Gatliff Road London, SW1W

£250 Per Week

A studio apartment to rent of approx. 271sq.ft (25.22sq.m) in this popular secure development located close to the banks of the River Thames by Chelsea Bridge. This FURNISHED property is presented in good condition and offers an open plan studio/reception room, a fitted kitchen, a modern bathroom and wood flooring with underfloor heating. Residents will have the use of a 24 hour concierge service, a leisure suite with a well-equipped gym and spa facilities.

Available via our office on-site here at Grosvenor Waterside (underneath Bramah House). There is also an on-site Sainsbury's Local, a coffee shop, crèche and Purple Dragon private kids club. The additional amenities including shops, restaurants of both Sloane Square and Victoria with its excellent transport links and Gatwick Express are within walking distance.

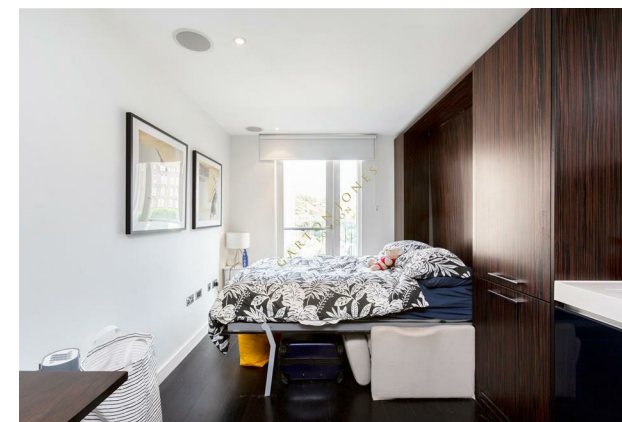
Please note furniture may differ to that shown in the current photos

- 271sq.ft (25.22sq.m)
- Studio Apartment
- Open Plan Living
- Modern Bathroom
- Integrated Kitchen Appliances
- 24 Hour Concierge
- Parking Under Separate Negotiation
- Residents Gym with Spa Facilities
- On-Site Sainsbury's, Coffee Shop & Bakery, Purple Dragon Private Kids Club & Crèche
- Walking Distance to Sloane Square & Victoria Station

GARTON JONES.COM

8 Gatliff Road
Chelsea
London
SW1W 8DP

Lettings:
+44 (0) 20 7730 5007
gws@gartonjones.com
www.gartonjones.com



Approximate Gross Internal Area
271 sq ft / 25.22 sq m
Type: 30.1

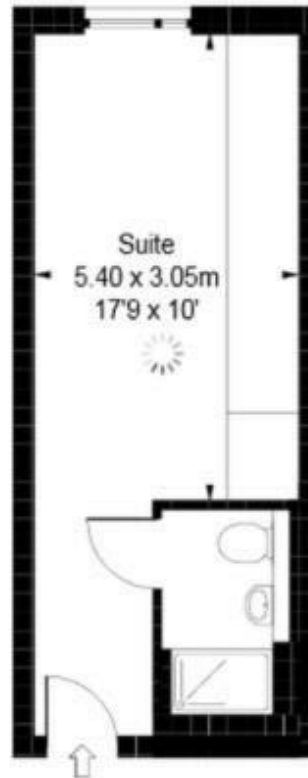


ILLUSTRATION FOR IDENTIFICATION PURPOSES ONLY

