



## Pedley Road, DAGENHAM, RM8 1XQ

### £1,250 Per Month

GUIDE PRICE £1250 - £1300

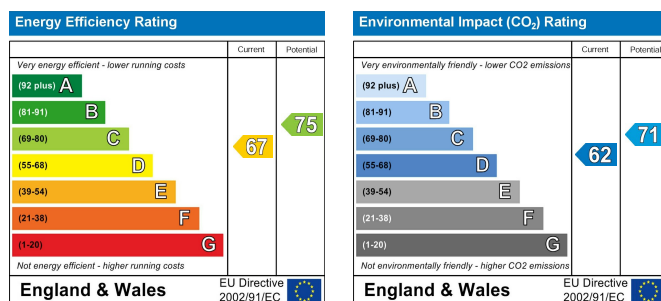
A TWO BEDROOM MID TERRACE HOUSE situated within close distance to Chadwell Heath station and located on this private development in the London Borough of Redbridge. The property is in good decorative order and comes unfurnished. FULL WORKING TENANTS ONLY. AVAILABLE 6TH APRIL .



Scan here for a direct link to our website

- TWO BEDROOMS
- KITCHEN
- OFF STREET PARKING
- GAS CENTRAL HEATING
- UNFURNISHED

- LOUNGE
- BATHROOM/W.C.
- CLOSE TO CHADWELL HEATH STATION
- DOUBLE GLAZING
- AVAILABLE 6th APRIL

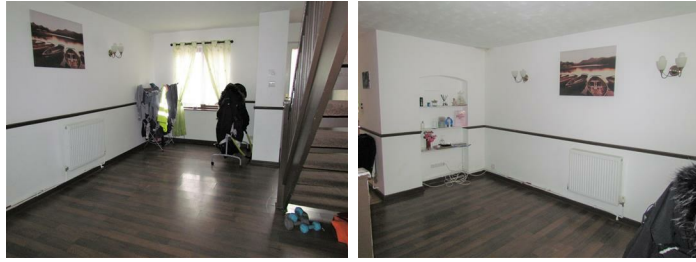


**AGENTS NOTE:** 'We routinely refer buyers and sellers to solicitors and conveyancers. It is your decision whether you choose to deal with them. Should you decide to use them you should know that we would receive a referral fee of between £120 and £200 including VAT from them for recommending you to them.'

The mention of any appliances and/or services within these Sales Particulars does not imply that they are in full and efficient working order. All measurements have been taken using a sonic tape measure or laser distance meter and therefore may be subject to a small margin of error. Whilst we endeavour to make our Sales Particulars accurate and reliable, if there is any point which is of particular importance to you, please contact us and we will be pleased to check the information. Do so particularly if contemplating travelling some distance.

**GROUND FLOOR:**

**Lounge (Reception)**



Wooden flooring. Curtains.

**Kitchen/diner**



Oven and hob. Tiled flooring.

**FIRST FLOOR:**

**Bedroom One**



Double Bedroom. Wooden flooring.

**Bedroom Two**



Double Bedroom. Wooden flooring.

**Bathroom/w.c.:**



Three piece suite

**EXTERIOR:**

**Off street parking:**



**Garden**



Paved.

**FEATURES:**

- GAS CENTRAL HEATING
- DOUBLE GLAZING
- UNFURNISHED
- OFF STREET PARKING
- AVAILABLE 6TH APRIL

