



Flanders Mansions, London, W4 1NE

£695,000

**WHITMAN & CO.**

SALES · LETTINGS · COMMERCIAL



- Far-reaching west facing views
- 16'6 Reception room
- 3-Minute walk to two tube stations
- Three bedrooms
- High ceilings
- No chain

Tenure - Leasehold + Share in the freehold  
 Lease length - 950 years remaining  
 Service Charge - Approx. £3000 pa  
 Ground Rent - £50 pa  
 Local Authority - Hounslow  
 Council Tax - Band E

## THE PROPERTY

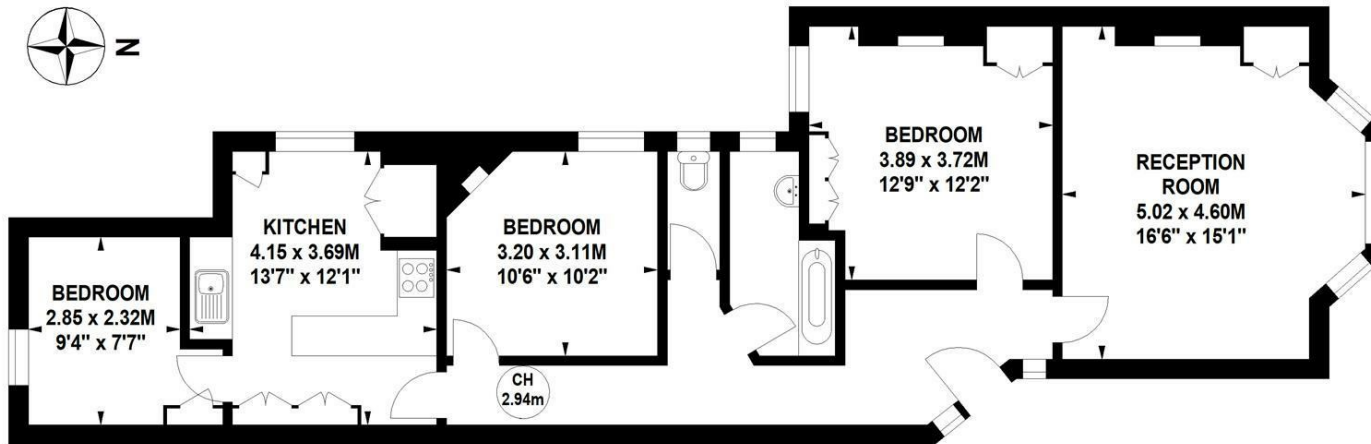
A light and spacious mansion flat in arguably the best position in the block benefitting from lovely far-reaching west facing views. The apartment is well proportioned with 2.94m high ceilings and comprises a spacious entrance hall, 16'6x15'1 reception room with bay window and fireplace, kitchen/breakfast room, three bedrooms, bathroom, separate WC, storage shed and communal gardens. Flanders Mansions is conveniently located just a short walk from Chiswick High Road and Turnham Green Terrace's shops, cafes and restaurants. Transport links include Stamford Brook and Turnham Green stations, local bus routes and the A4/M4 for routes in and out of London. No chain.

## Flanders Mansions, W4

Approximate gross internal area

88.07 sq m / 948 sq ft

Key :  
 CH - Ceiling Height



### Second Floor

Not to scale, for guidance only and must not be relied upon as a statement of fact.  
 All measurements and areas are approximate only

## SITUATION



5-7 Turnham Green Terrace, Chiswick, London, W4 1RG

Tel 020 8747 8300

E-mail [sales@whitmanandco.com](mailto:sales@whitmanandco.com)

Website [www.whitmanandco.com](http://www.whitmanandco.com)



MISREPRESENTATION ACT 1967

Whitman & Co. for themselves and for the vendors give notice that these particulars do not constitute any part of, an offer of contract. All statements contained in these particulars are made without responsibility on the part of Whitman & Co. or the vendor. None of the statements contained in these particulars is to be relied upon as statements or representations of facts. Any intending purchaser must satisfy himself by inspection or otherwise as to the correctness of each of the statements contained in these particulars. The vendor does not make or give, and neither Whitman & Co. or any person in their employment has any authority to make or give, any representation or warranty whatever in relation to the property.