



Markyate Cell
Markyate Park | Dunstable Road | St Albans | AL3 8QH

FINE & COUNTRY

MARKYATE CELL





Dating back to the early 12th century, the main house of Markyate Cell offers in the region 12,000 Sq ft. Unquestionably one of the finest and most lavish abodes in the county, the staggering property has been meticulously enhanced by the current owners who have embraced the elegant and nuanced décor of a traditional home.

Through the picturesque and meandering tree lined driveway you approach the property in all its magnificent grandeur. Notably, the three rounded lead covered turrets, crenelated gable end brick work and ornate moulded stonework. Sitting prominently in an elevated central location within the grounds the resplendent home offers a range of fine, well-proportioned reception rooms, nine bedrooms and five bathrooms. Ornate moulded ceilings with cornices, a stunning Jacobean staircase, wood panelling, Tudor fireplaces and stone arch doorways further showcases the architectural character.







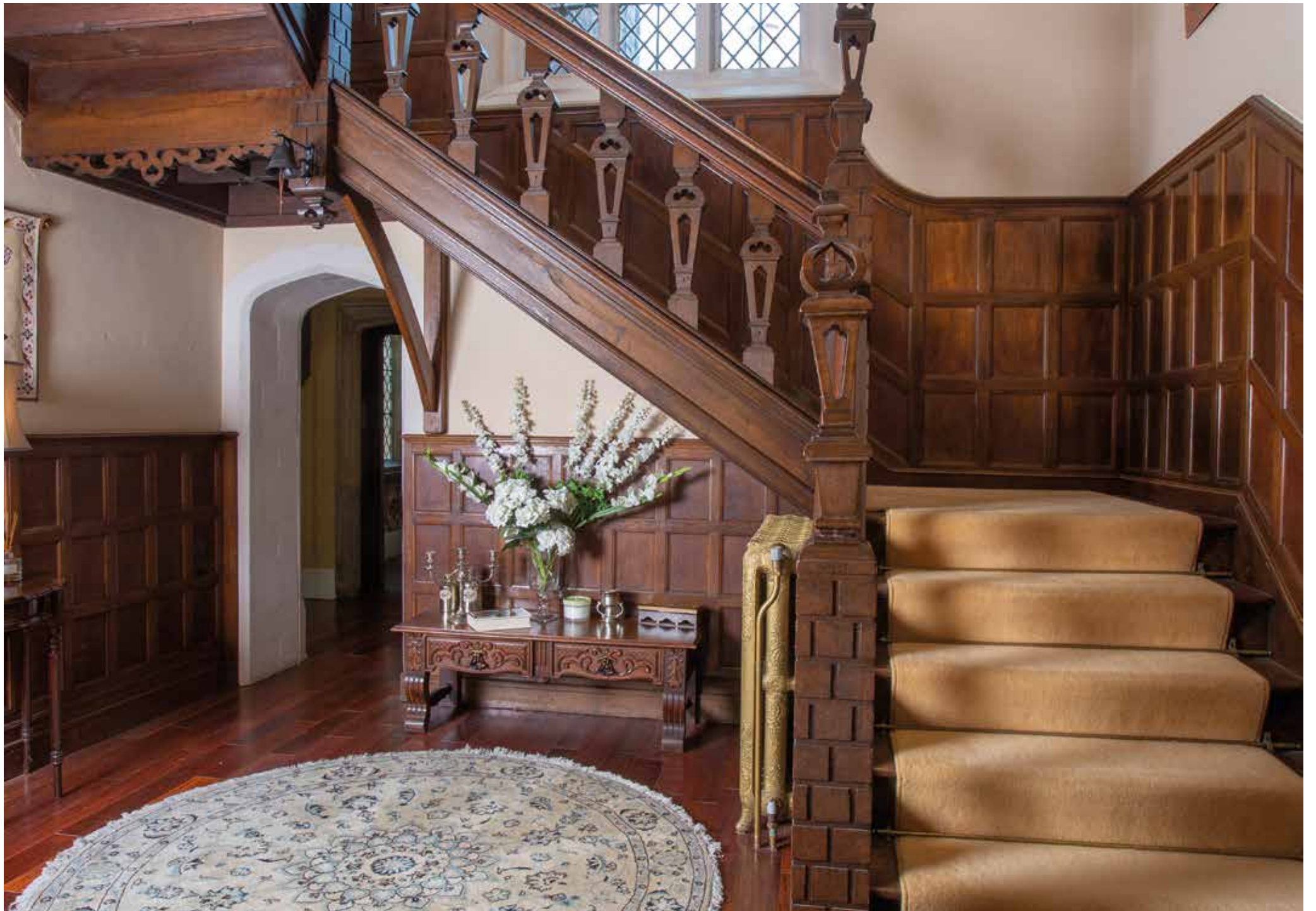


























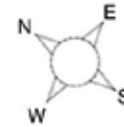


Externally, the formal South-West facing gardens comprises of a patio and landscaped lawn area with stone steps leading to two separate elevated walled gardens. The double garage and separate bike store are situated to the East side of the main residence. Furthermore, a self-contained two-bedroom cottage, a one-bedroom staff apartment and a two-bedroom original gate keepers' cottage are part of the estate.

St Albans 10miles; Harpenden 7miles; M1 (Jct9) 3miles; M25 (Jct21) 10miles; Central London 32miles; Beechwood Park Independent School 1.9mile; Berkhamsted Independent School 9miles; St Columba's Independent College 10miles; Aldwickbury Independent School 8miles; Whipsnade (ZSL) Zoo 3miles.



Markyate Cell, Markyate Park, Dunstable Road, St. Albans
Main House internal area 11,912 sq ft (1,107 sq m)
Cottage internal area 1,929 sq ft (179 sq m)
Outbuilding internal area 1,323 sq ft (123 sq m)



FOR ILLUSTRATIVE PURPOSES ONLY - NOT TO SCALE
 The position & size of doors, windows, appliances and other features are approximate only.

□ □ □ □ Denotes restricted head height

© ehous. Unauthorised reproduction prohibited. Drawing ref. dig/8426752/SS

EPC Exempt



FINE & COUNTRY

Fine & Country is a global network of estate agencies specialising in the marketing, sale and rental of luxury residential property. With offices in the UK, Australia, Egypt, France, Hungary, Italy, Malta, Namibia, Portugal, Russia, South Africa, Spain, The Channel Islands, UAE, USA and West Africa we combine the widespread exposure of the international marketplace with the local expertise and knowledge of carefully selected independent property professionals.

Fine & Country appreciates the most exclusive properties require a more compelling, sophisticated and intelligent presentation - leading to a common, yet uniquely exercised and successful strategy emphasising the lifestyle qualities of the property.

This unique approach to luxury homes marketing delivers high quality, intelligent and creative concepts for property promotion combined with the latest technology and marketing techniques.

We understand moving home is one of the most important decisions you make; your home is both a financial and emotional investment. With Fine & Country you benefit from the local knowledge, experience, expertise and contacts of a well trained, educated and courteous team of professionals, working to make the sale or purchase of your property as stress free as possible.

Fine & Country
Tel: +44 (0)1727 229799
stalbans@fineandcountry.com
3 London Road, St Albans AL1 1LA

