

house.

PARTNERSHIP

Moving estate agency on



h.

GAYFERE COTTAGE

Court Barn Lane
Birdham
Chichester PO20 7BQ

An appealing detached house with pretty gardens, lovely views and standing in a delightful country lane, a short walk from Birdham Pool Marina on Chichester Harbour

- Porch and entrance hall
- Sitting room and dining room
- Sun room
- Kitchen, utility room and cloakroom
- 3 bedrooms
- Family bathroom
- Shower room
- Gardens and grounds
- Detached single garage
- EPC: tbc



h.

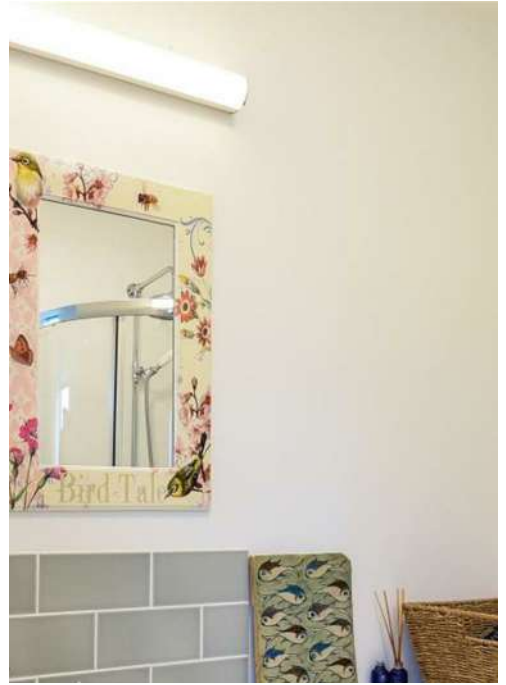


h.



properties perfectly presented

h.

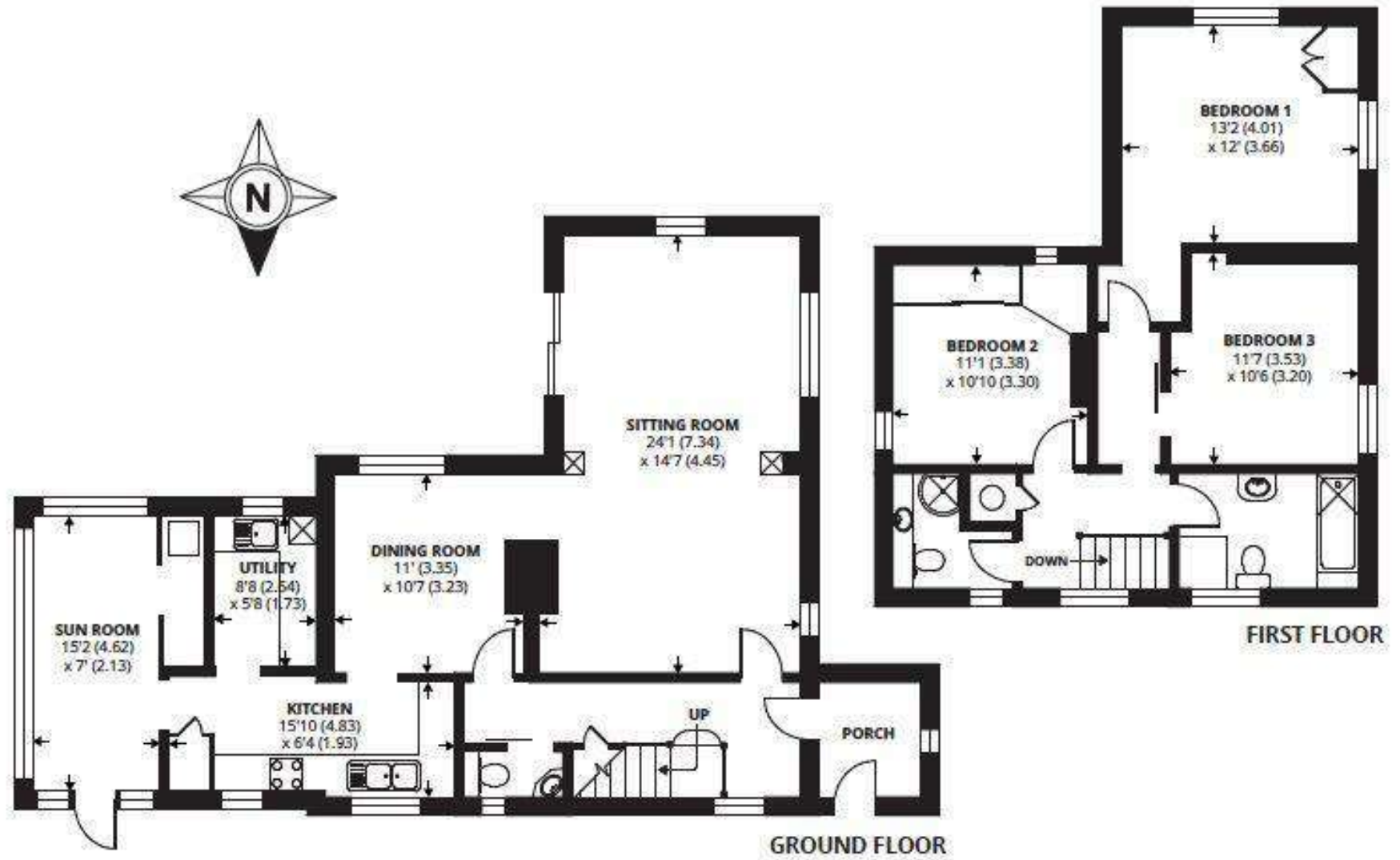


h.



h.

APPROX. GROSS INTERNAL FLOOR AREA 1563 SQ FT 145.2 SQ METRES



h.

HOUSE INFORMATION

Approximate total gross internal area: 1,563 sq ft / 145.2 sq m.

Services: Mains water and electricity. Oil-fired central heating. Private drainage.

Local authority: Chichester District Council.
Tel: 01243 785166.

Viewing: Strictly by appointment. Tel: 01243 717417.

Energy Efficiency Rating		Current	Potential
Very energy efficient - lower running costs			
102 plus)	A		
81-101)	B		
61-80)	C		
41-60)	D		
21-40)	E		
1-20)	F		
1-10)	G		
Not energy efficient - higher running costs			

England & Wales EU Directive 2002/91/EC



t. 0800 917 0447

w. housepartnership.co.uk

f in p @