



Lindsay Close, Chessington





# £390,000

## Freehold

- End Of Terrace
- Two Bedrooms
- Open Plan Living
- Conservatory
- Large Storage Room
- 36ft Rear Garden
- Designated Parking
- Chessington South Station Close By
- Potential To Extend STPP



The Personal Agent are pleased to present this two bedroom end of terrace home which offers spacious living accommodation. This property would suit a number of buyers, first time buyers, downsizers and investors alike.

The property comprises an entrance porch with door into the living room with a front aspect window and access to the understairs storage, the living room is open plan to the kitchen/dining area, the kitchen has a range of eye and base level units with a wooden worktop and inbuilt oven and hob with space for further utility, from the dining area there are doors to the conservatory which overlooks and opens onto the garden and benefits for air conditioning/heating.

On the first floor there are two bedrooms, both with built-in storage, both served by the family bathroom.

Outside to the front there is a small front garden with a door to the side storage room and on block designated parking.

The rear garden measures approximately 36ft with a patio area across the rear of the property, ideal for outside dining, the remainder of the garden is laid to lawn with a gravelled area in front of the shed.

The property also offers the potential to extend STPP.

The location is perfect for everybody, especially if you are looking for easy access to both the M25 or A3.

Ewell Village offers a variety of shops, restaurants, cafés and pubs. Bourne Hall hosts a public library, subterranean theatre, gymnasium, café, and local museum. It regularly holds gatherings such as fayres.

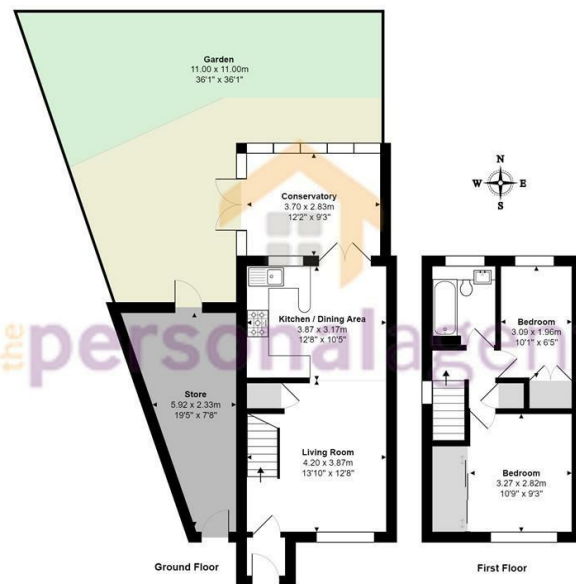
In the heart of the village lies the Hogsmill river leading up to the nature reserve. There are a range of popular local schools - including Chessington Community Collage and of course Chessington South (6 minutes walk), Ewell East and Ewell West stations with their connections to London close by.

Freehold









Lindsay Close, Chessington  
Total Area: 84.9 m<sup>2</sup> ... 914 ft<sup>2</sup> (excluding garden)  
FOR ILLUSTRATIVE PURPOSES ONLY.

Whilst every attempt has been made to ensure the accuracy of the floor plan shown, all measurements, positioning, fixtures, features, fittings and any other data shown are an approximate interpretation for illustrative purposes only and are not to scale.

No responsibility is taken for any error, omission, mis-statement or use of data shown.

The above statement applies to both 'Still Moving London LTD' and the Company or individual displaying this floor plan.

Unauthorised reproduction prohibited.

© Still Moving London LTD (www.stillmoving.london)



Energy Efficiency Rating		
	Current	Potential
Very energy efficient - lower running costs		
(92 plus) <b>A</b>		
(81-91) <b>B</b>		
(69-80) <b>C</b>		
(55-68) <b>D</b>		
(39-54) <b>E</b>		
(21-38) <b>F</b>		
(1-20) <b>G</b>		
Not energy efficient - higher running costs		
England & Wales		EU Directive 2002/91/EC

**Epsom Office**  
2 West Street  
Epsom, Surrey KT18 7RG  
T: 01372 745 850

**Ewell Office**  
220 Chessington Road  
West Ewell, Surrey KT19 9XA  
T: 020 8394 1234

**Stoneleigh Office**  
62 Stoneleigh Broadway  
Stoneleigh, Surrey KT17 2HS  
T: 020 8393 9411

**Banstead Office**  
141 High Street Banstead,  
Surrey SM7 2NS  
T: 01737 333699

**the personalagent**  
sales@thepersonalagent.co.uk | thepersonalagent.co.uk

**Please Note:** Whilst every attempt has been made to ensure the accuracy of the floorplans contained here, measurements of doors, windows and room areas are approximate and no responsibility is taken for any error, omission or mis-statement. These plans are for representation purposes only and should be used as such by and prospective purchaser. The services, systems and appliances listed in the specification have not been tested by The Personal Agent and no guarantee as to their operating ability or their efficiency can be given. All images and text used to advertise our properties are for the sole use of The Personal Agent Ltd.







the personal agent